



# GROUNDWATER QUALITY ANALYSIS REPORT

## *Kandal - Kien Svay - Banteay Daek (1F)*



Banteay Daek is located in the district of Kien Svay. The population of this commune is approximately 12353 (2004). Groundwater sample collection occurred in September 2005 and consisted of the sampling of 20 tube wells throughout the commune. The attached figure presents the location of Banteay Daek within Kandal as well as groundwater sample locations and exceedances of health-impacting contaminants (when applicable).

### **Groundwater Quality Rating**

The groundwater quality rating for Banteay Daek is 1F. Therefore, the general safety of deep aquifer groundwater is extremely poor and the aesthetic quality of the water is poor, according to the contaminants measured and samples collected. The following two sections describe all major health and aesthetic contaminants that exceeded drinking water standards in at least one sample within the commune.

### **Contaminants of Potential Concern – Health**

**Arsenic** - Elevated concentrations of Arsenic were observed within the commune. The estimated probability of encountering unacceptable concentrations of Arsenic (>50 ppb) in tube wells is 64%, based on the observed data. Long-term (5 to 10 year) exposure to elevated concentrations of Arsenic can cause arsenicosis (debilitating skin disease), increased risks of contracting cancer, as well as other negative health impacts.

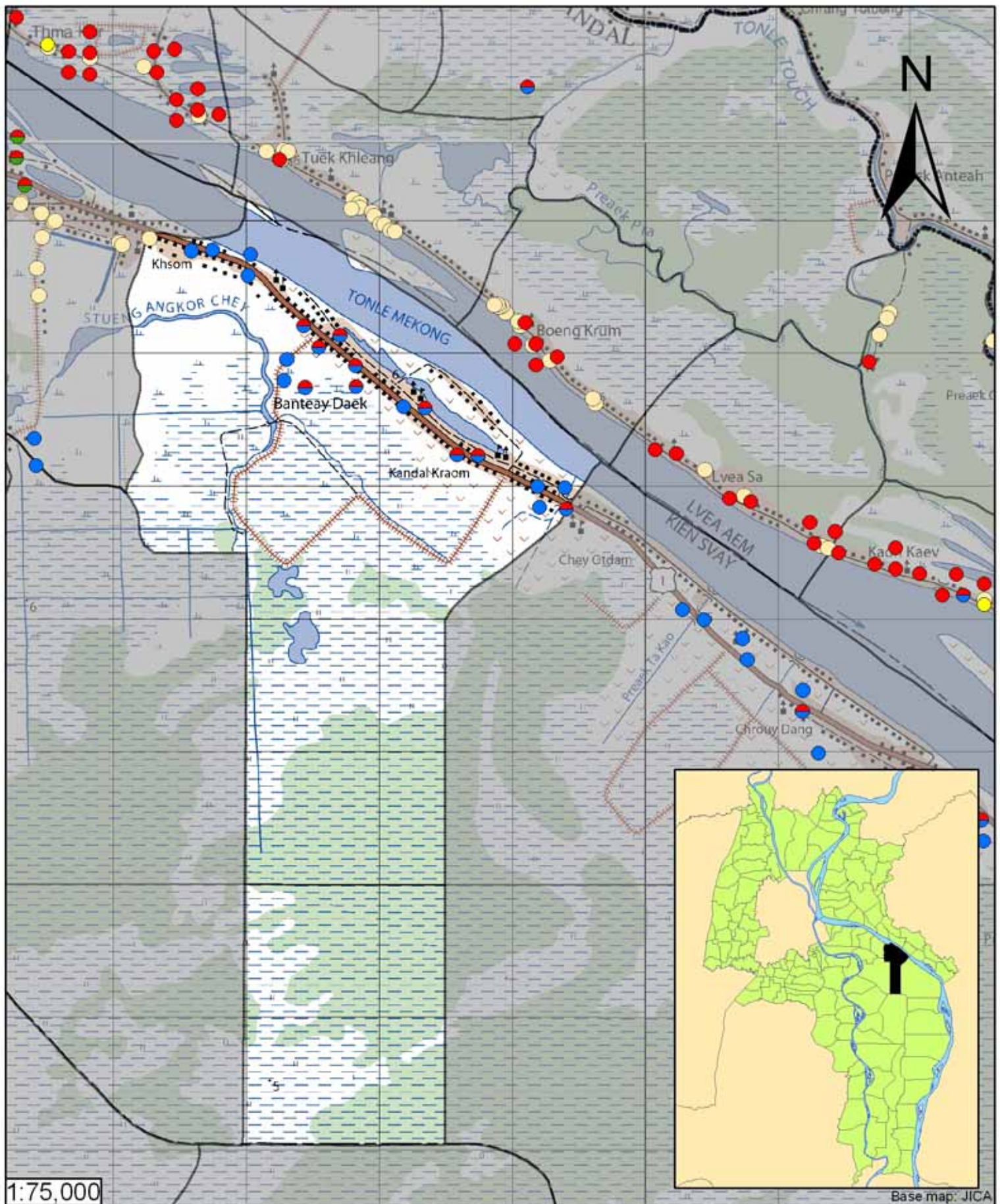
**Manganese** - Elevated concentrations of Manganese were observed within the commune. The estimated probability of encountering unacceptable concentrations of Manganese (>0.4 mg/L) in tube wells is 100%, based on the observed data. Exposure to elevated concentrations of Manganese can cause neurological disorders. Aeration allows oxygen to enter the water and react with Manganese to form a compound which is insoluble in water. The newly formed solids will slowly settle to the bottom or can be removed more rapidly by filtration. Performing these procedures may reduce the concentration of Manganese in water but follow-up testing is recommended to ensure water quality standards are met.

## Contaminants of Potential Concern – Aesthetic

Iron - Elevated concentrations of Iron were observed within the commune. The estimated probability of encountering potentially unacceptable concentrations of Iron (>1 mg/L) in tube wells is 100%, based on the observed data. At elevated concentrations, Iron causes water to be cloudy and unpleasant to drink. An odor may also be encountered at high concentrations. Iron can also stain laundry, food (can cause discoloration of cooked rice), and leave deposits. Aeration allows oxygen to enter the water and react with Iron to form a compound which is insoluble in water. The newly formed solids will slowly settle to the bottom or can be removed more rapidly by filtration. Performing these procedures may reduce the concentration of Iron in water but follow-up testing is recommended to ensure water quality standards are met.

Manganese - Elevated concentrations of Manganese were observed within the commune. The estimated probability of encountering unacceptable concentrations of Manganese (>0.4 mg/L) in tube wells is approximately 100%, based on the observed data. At elevated concentrations, Manganese causes water to be cloudy and unpleasant to drink. Manganese can also stain laundry, food (can cause discoloration of cooked rice), and leave deposits. Aeration allows oxygen to enter the water and react with Manganese to form a compound which is insoluble in water. The newly formed solids will slowly settle to the bottom or can be removed more rapidly by filtration. Performing these procedures may reduce the concentration of Manganese in water but follow-up testing is recommended to ensure water quality standards are met.

Turbidity - Elevated levels of Turbidity were observed within the commune. The estimated probability of encountering potentially unacceptable levels of Turbidity (>20 ntu) in tube wells is 30%, based on the observed data. Turbid or cloudy water appears unpleasant to the eye and is more likely have an unpleasant taste or odor. Turbidity can be reduced by filtration.



- Arsenic
- Manganese
- Fluoride
- Nitrate
- No Exceedance
- Provincial Boundary
- Commune Boundary
- Locations exceeding the Cambodian water quality standards for major health-impacting contaminants have been colour-coded and arranged such that they do not overlap.

## Tube Well Sample Locations and Health-Based Exceedances

*Banteay Daek - Kien Svay - Kandal - Cambodia*

Resource Development International - Cambodia  
[www.rdic.org](http://www.rdic.org)  
 June 2008

