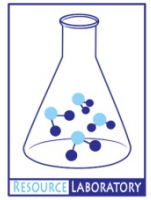




GROUNDWATER QUALITY ANALYSIS REPORT

Kandal - Ponhea Lueu - Kampong Luong (N/A)



Kampong Luong is located in the district of Ponhea Lueu. The population of this commune is approximately 9197 (2004). Groundwater sample collection occurred in January 2007 and consisted of the sampling of 1 tube wells throughout the commune. The attached figure presents the location of Kampong Luong within Kandal as well as groundwater sample locations and exceedances of health-impacting contaminants (when applicable).

Groundwater Quality Rating

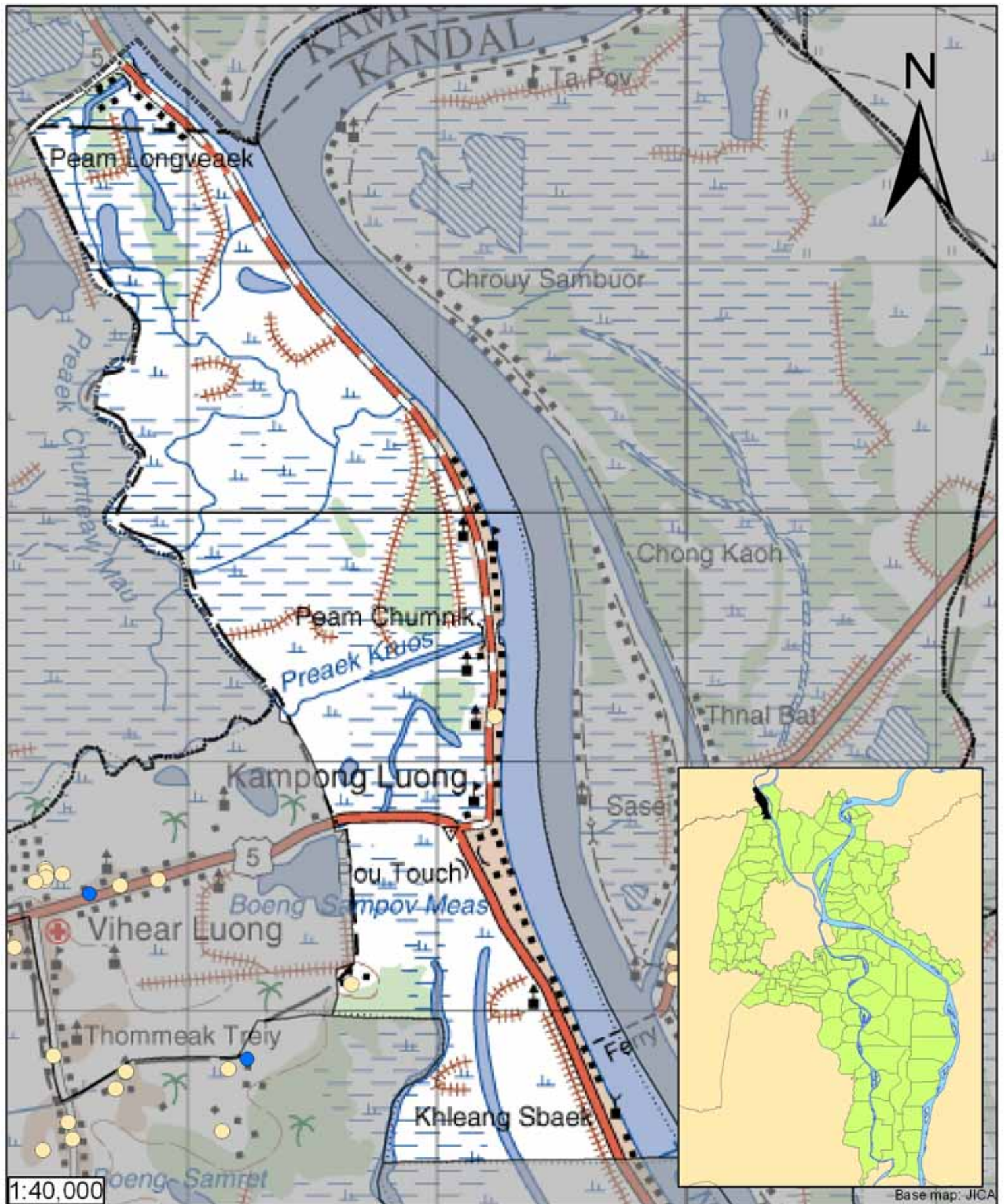
An insufficient number of samples were collected in this commune to adequately characterize groundwater conditions. A groundwater quality rating is not presented for this commune.

Contaminants of Potential Concern – Health

No health-impacting contaminants of concern were observed within this commune.








Contaminants of Potential Concern – Aesthetic

No aesthetic-impacting contaminants of concern were observed within this commune.



1:40,000

Base map: JICA

-  Arsenic
 -  Manganese
 -  Fluoride
 -  Nitrate
 -  No Exceedance
 -  Provincial Boundary
 -  Commune Boundary
- Locations exceeding the Cambodian water quality standards for major health-impacting contaminants have been colour-coded and arranged such that they do not overlap.

Tube Well Sample Locations and Health-Based Exceedances

Kampong Luong - Ponhea Lueu - Kandal - Cambodia

Resource Development International - Cambodia
www.rdic.org
 June 2008

