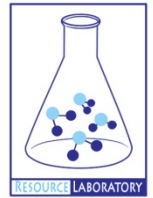




GROUNDWATER QUALITY ANALYSIS REPORT

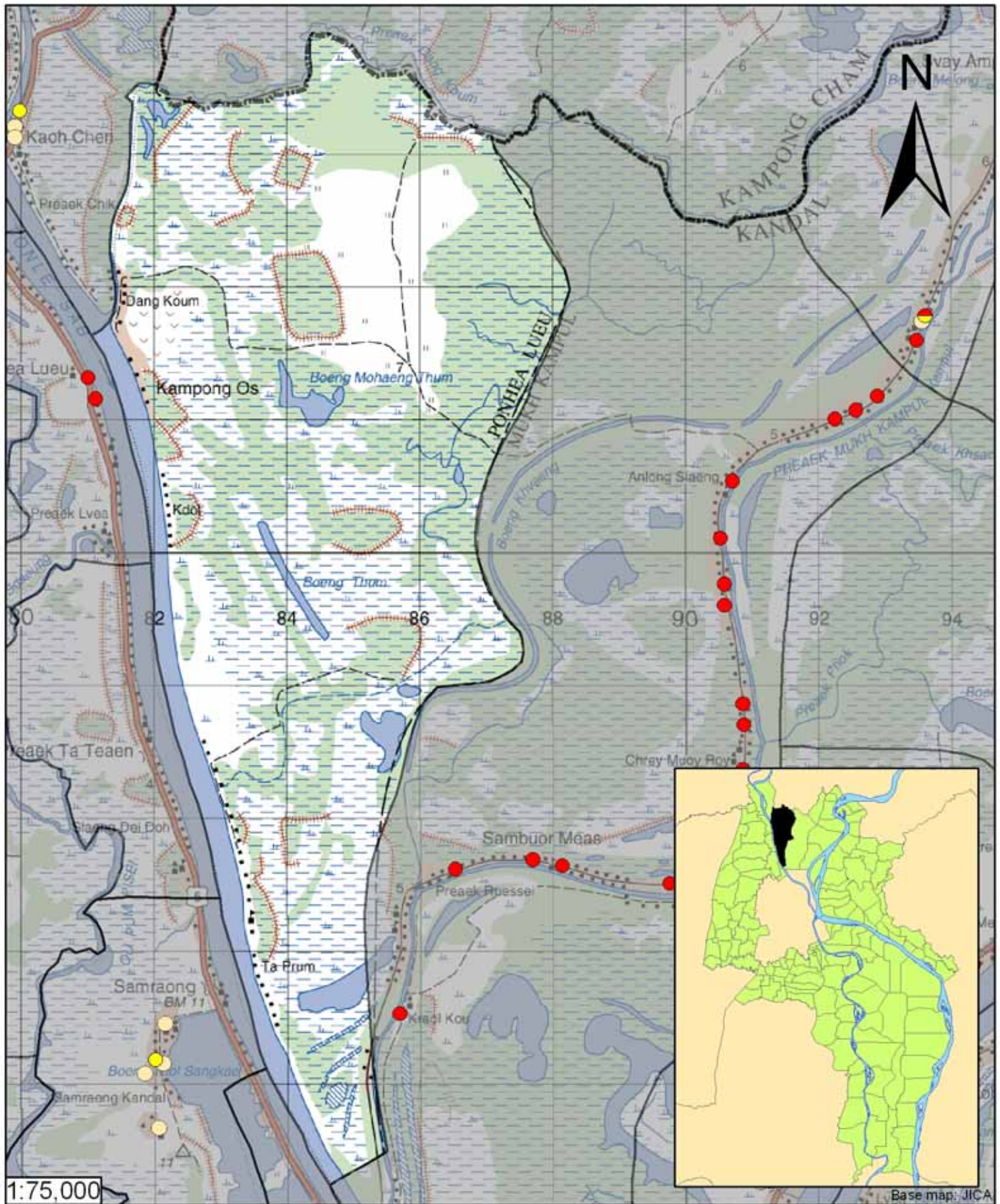
Kandal - Ponhea Lueu - Kampong Os (N/A)



Kampong Os is located in the district of Ponhea Lueu. The population of this commune is approximately 6277 (2004). No tube wells were sampled in the commune. The attached figure presents the location of Kampong Os within Kandal as well as groundwater sample locations and exceedances of health-impacting contaminants in surrounding communes.

Groundwater Quality Rating

The groundwater quality rating for Kampong Os cannot be reported.



- Arsenic
 - Manganese
 - Fluoride
 - Nitrate
 - No Exceedance
 - Provincial Boundary
 - Commune Boundary
- Locations exceeding the Cambodian water quality standards for major health-impacting contaminants have been colour-coded and arranged such that they do not overlap.

Tube Well Sample Locations and Health-Based Exceedances

Kampong Os- Ponhea Lueu - Kandal - Cambodia

Resource Development International - Cambodia
www.rdic.org
 June 2008

