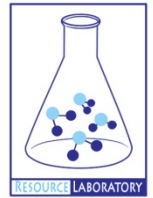




# **GROUNDWATER QUALITY ANALYSIS REPORT**

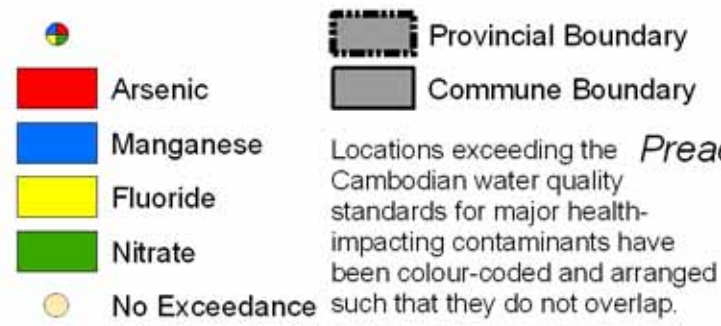
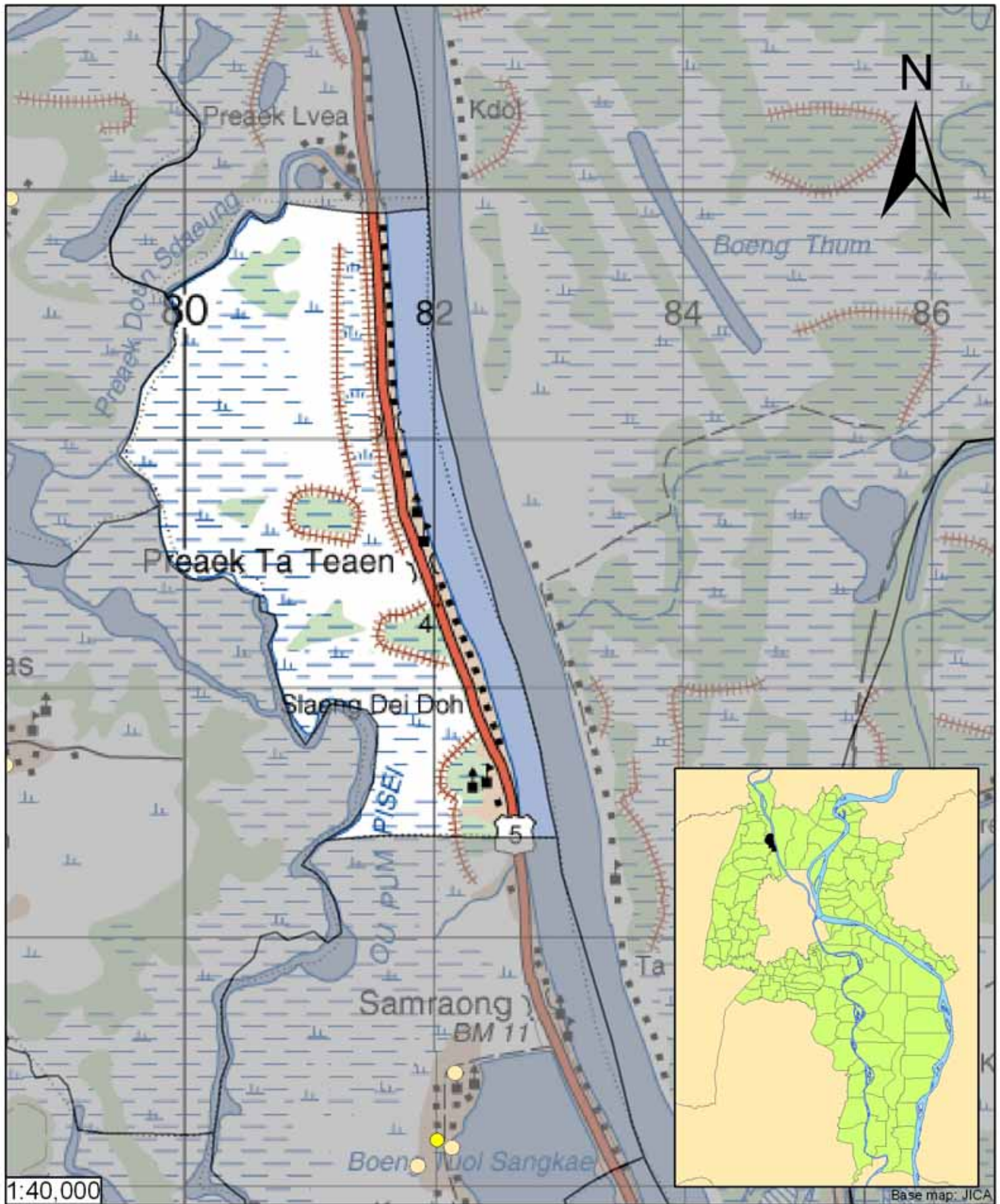
## ***Kandal - Ponhea Lueu - Preaek Ta Teaen (N/A)***



Preaek Ta Teaen is located in the district of Ponhea Lueu. The population of this commune is approximately 7208 (2004). No tube wells were sampled in the commune. The attached figure presents the location of Preaek Ta Teaen within Kandal as well as groundwater sample locations and exceedances of health-impacting contaminants in surrounding communes.

### **Groundwater Quality Rating**

The groundwater quality rating for Preaek Ta Teaen cannot be reported.



## Tube Well Sample Locations and Health-Based Exceedances

*Preaek Ta Teanen- Ponhea Lueu - Kandal - Cambodia*

Resource Development International - Cambodia  
[www.rdic.org](http://www.rdic.org)  
 June 2008



Base map: JICA