



GROUNDWATER QUALITY ANALYSIS REPORT

Kampong Cham - Cheung Prey - Kouk Rovieng (100F)



Kouk Rovieng is located in the district of Cheung Prey. The population of this commune is approximately 3033 (2004). Groundwater sample collection occurred in March 2008 and consisted of the sampling of 7 tube wells throughout the commune. The attached figure presents the location of Kouk Rovieng within Kampong Cham as well as groundwater sample locations and exceedances of health-impacting contaminants (when applicable).

Groundwater Quality Rating

The groundwater quality rating for Kouk Rovieng is 100F. Therefore, the general safety of deep aquifer groundwater is very good and the aesthetic quality of the water is good, according to the contaminants measured and samples collected. The following two sections describe all major health and aesthetic contaminants that exceeded drinking water standards in at least one sample within the commune.

Contaminants of Potential Concern – Health

No health-impacting contaminants of concern were observed within this commune.

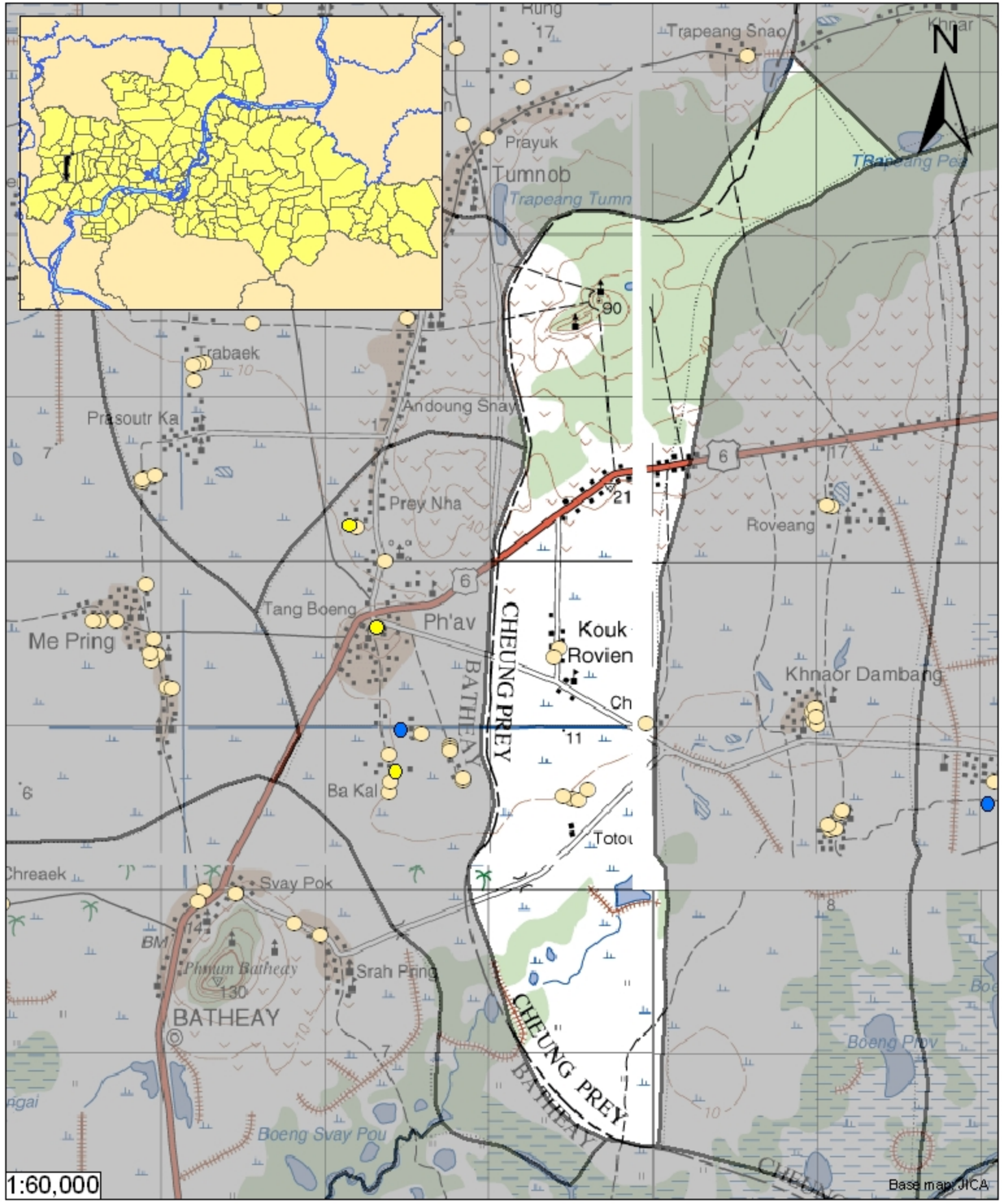
Contaminants of Potential Concern – Aesthetic

Iron - Elevated concentrations of Iron were observed within the commune. The estimated probability of encountering potentially unacceptable concentrations of Iron (>1 mg/L) in tube wells is 38%, based on the observed data. At elevated concentrations, Iron causes water to be cloudy and unpleasant to drink. An odor may also be encountered at high concentrations. Iron can also stain laundry, food (can cause discoloration of cooked rice), and leave deposits. Aeration allows oxygen to enter the water and react with Iron to form a compound which is insoluble in water. The newly formed solids will slowly settle to the bottom or can be removed more rapidly by filtration. Performing these procedures may reduce the concentration of Iron in water but follow-up testing is recommended to ensure water quality standards are met.

Turbidity - Elevated levels of Turbidity were observed within the commune. The estimated probability of encountering potentially unacceptable levels of Turbidity (>20

ntu) in tube wells is 19%, based on the observed data. Turbid or cloudy water appears unpleasant to the eye and is more likely have an unpleasant taste or odor. Turbidity can be reduced by filtration.

Hardness - Elevated levels of Hardness were observed within the commune. The estimated probability of encountering potentially unacceptable levels of Hardness (>500 mg/L) in tube wells is 4%, based on the observed data. Elevated hardness levels impact the effectiveness of soaps and detergents and can cause scaling on pipes and pans. Contrary to common belief, there is no relationship between consumption of hard water and urinary tract problems and kidney stones.



1:60,000

Base map: JICA

-  Locations exceeding the Cambodian water quality standards for major health-impacting contaminants have been colour-coded and arranged such that they do not overlap.
-  Arsenic
-  Manganese
-  Fluoride
-  Nitrate
-  No Exceedance
-  Commune Boundary
-  Provincial Boundary

Tube Well Sample Locations and Health-Based Exceedances

Kouk Rovieng - Cheung Prey - Kampong Cham - Cambodia

Resource Development International - Cambodia
www.rdic.org
 June 2008

