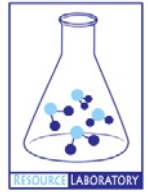




GROUNDWATER QUALITY ANALYSIS REPORT

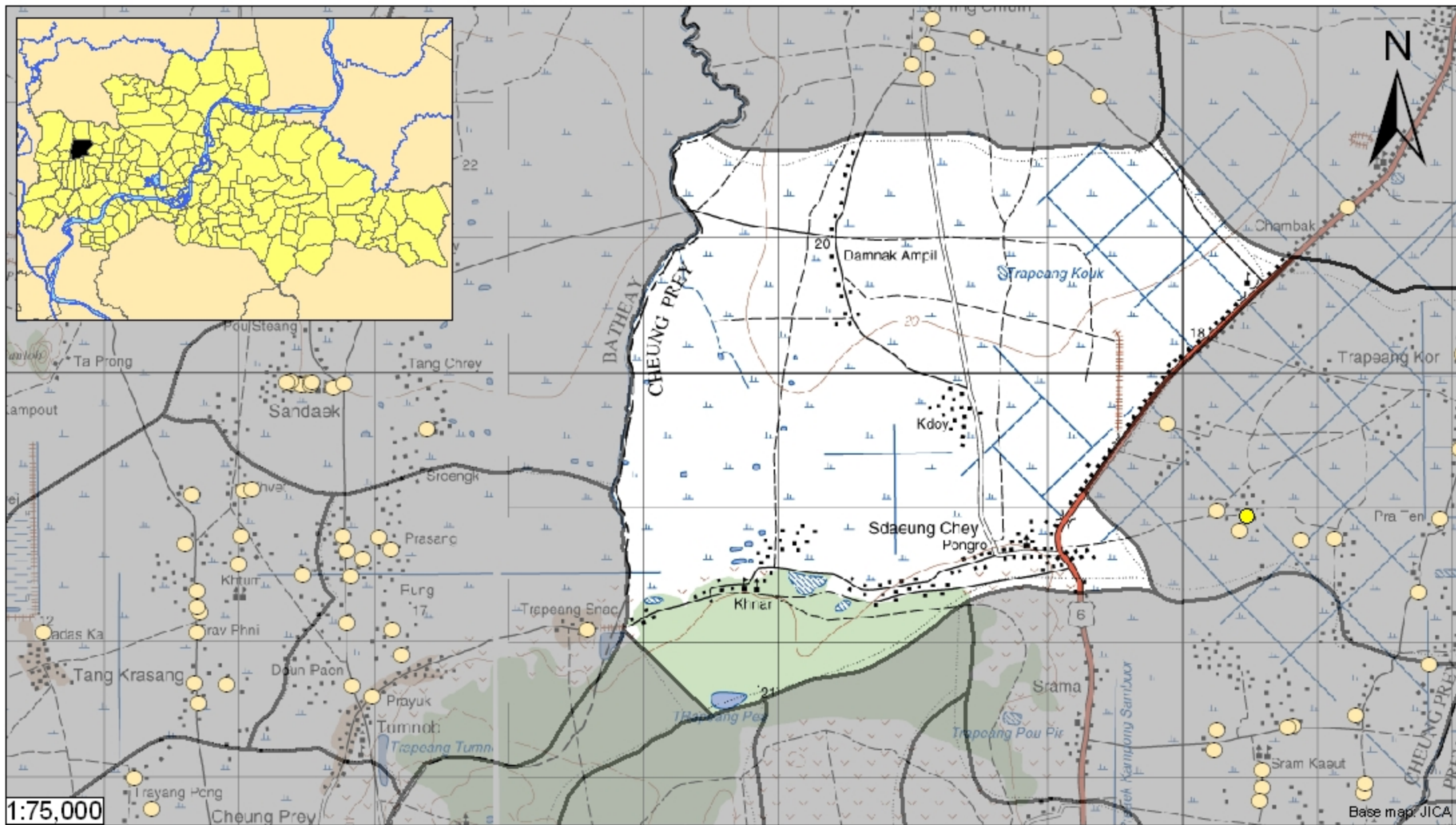
Kampong Cham – Cheung Prey – Sdaeung Chey (N/A)











Sdaeung Chey is located in the district of Cheung Prey. The population of this commune is approximately 8613 (2004). No tube wells were sampled in the commune. The attached figure presents the location of Sdaeung Chey within Kampong Cham as well as groundwater sample locations and exceedances of health-impacting contaminants in surrounding communes.

Groundwater Quality Rating

The groundwater quality rating for Sdaeung Chey cannot be reported.



-  Locations exceeding the Cambodian water quality standards for major health-impacting contaminants have been colour-coded and arranged such that they do not overlap.
-  No Exceedance
-  Arsenic
-  Manganese
-  Fluoride
-  Nitrate
-  Commune Boundary
-  Provincial Boundary

Tube Well Sample Locations and Health-Based Exceedances

Sdaeung Chey - Cheung Prey - Kampong Cham - Cambodia

Resource Development International - Cambodia
www.rdic.org
 June 2008

