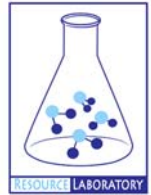




GROUNDWATER QUALITY ANALYSIS REPORT

Kampong Cham - Kampong Siem - Kaoh Mitt

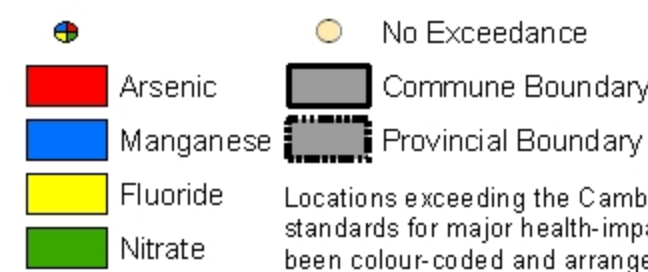
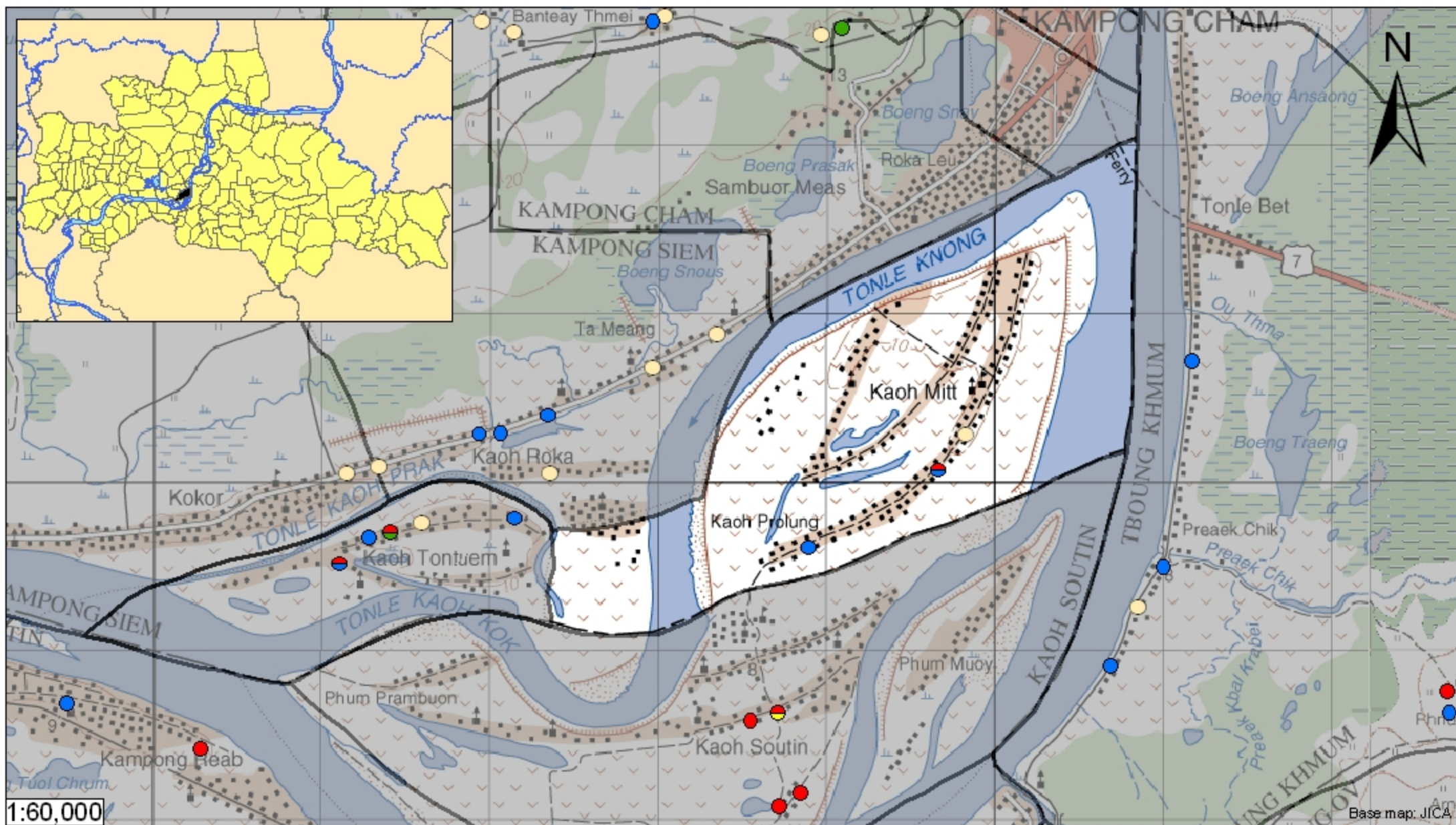
(N/A)



Kaoh Mitt is located in the district of Kampong Siem. The population of this commune is approximately 8535 (2004). Groundwater sample collection occurred in June 2008 and consisted of the sampling of 3 tube wells throughout the commune. The attached figure presents the location of Kaoh Mitt within Kampong Cham as well as groundwater sample locations and exceedances of health-impacting contaminants (when applicable).

Groundwater Quality Rating

An insufficient number of samples were collected in this commune to adequately characterize groundwater conditions. A groundwater quality rating is not presented for this commune.



Tube Well Sample Locations and Health-Based Exceedances
Kaoh Mitt - Kampong Siem - Kampong Cham - Cambodia

Locations exceeding the Cambodian water quality standards for major health-impacting contaminants have been colour-coded and arranged such that they do not overlap.