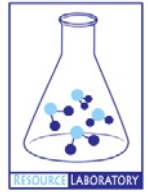




# **GROUNDWATER QUALITY ANALYSIS REPORT**

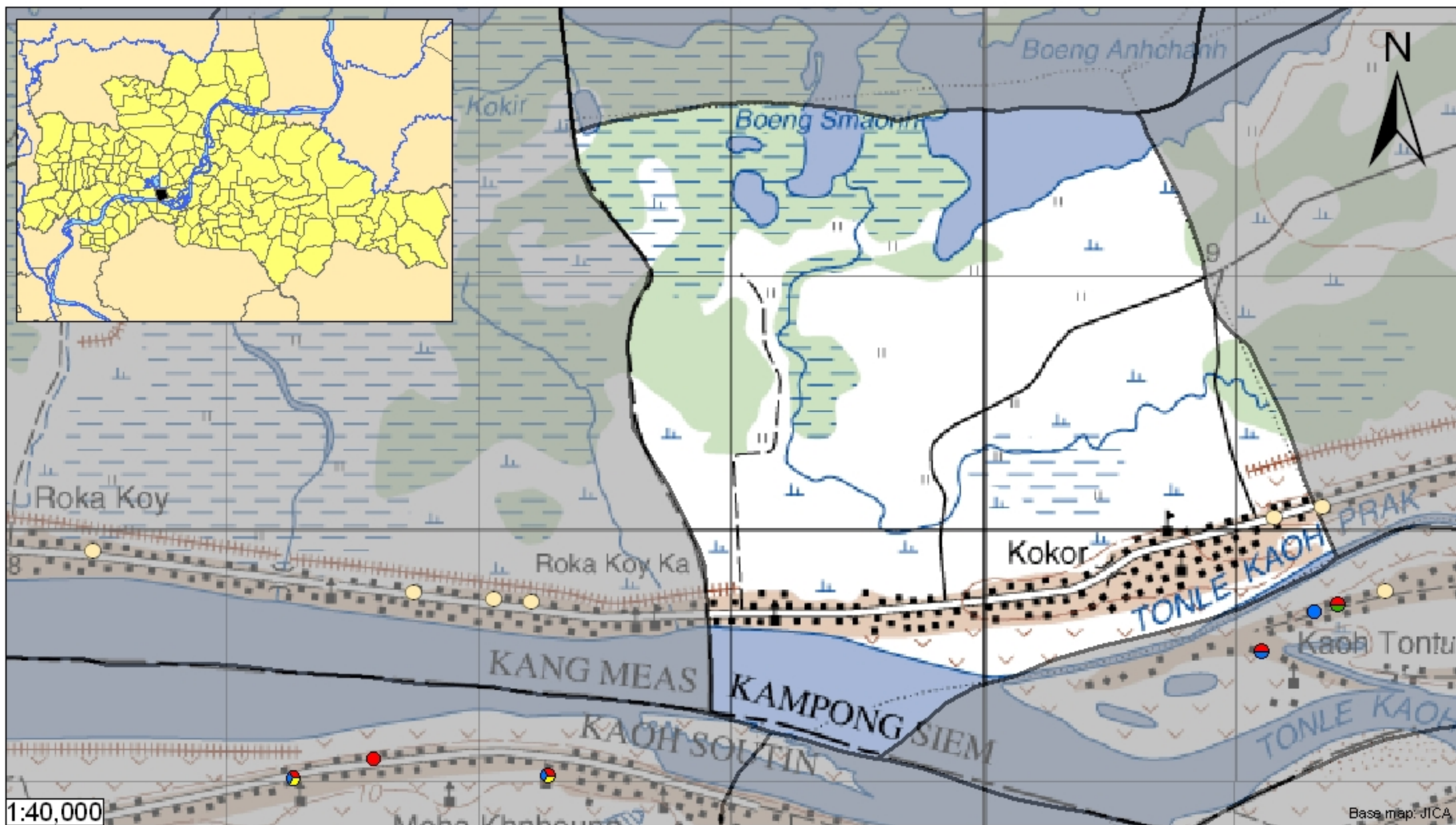
## ***Kampong Cham – Kampong Siem – Kokor (N/A)***



Kokor is located in the district of Kampong Siem. The population of this commune is approximately 3960 (2004). No tube wells were sampled in the commune. The attached figure presents the location of Kokor within Kampong Cham as well as groundwater sample locations and exceedances of health-impacting contaminants in surrounding communes.

### **Groundwater Quality Rating**

The groundwater quality rating for Kokor cannot be reported.



## Tube Well Sample Locations and Health-Based Exceedances









*Kokor - Kampong Siem - Kampong Cham - Cambodia*

Resource Development International - Cambodia

[www.rdic.org](http://www.rdic.org)

June 2008



-  Locations exceeding the Cambodian water quality standards for major health-impacting contaminants have been colour-coded and arranged such that they do not overlap.
-  Arsenic
-  Manganese
-  Fluoride
-  Nitrate
-  No Exceedance
-  Commune Boundary
-  Provincial Boundary