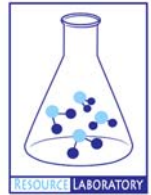




# **GROUNDWATER QUALITY ANALYSIS REPORT**

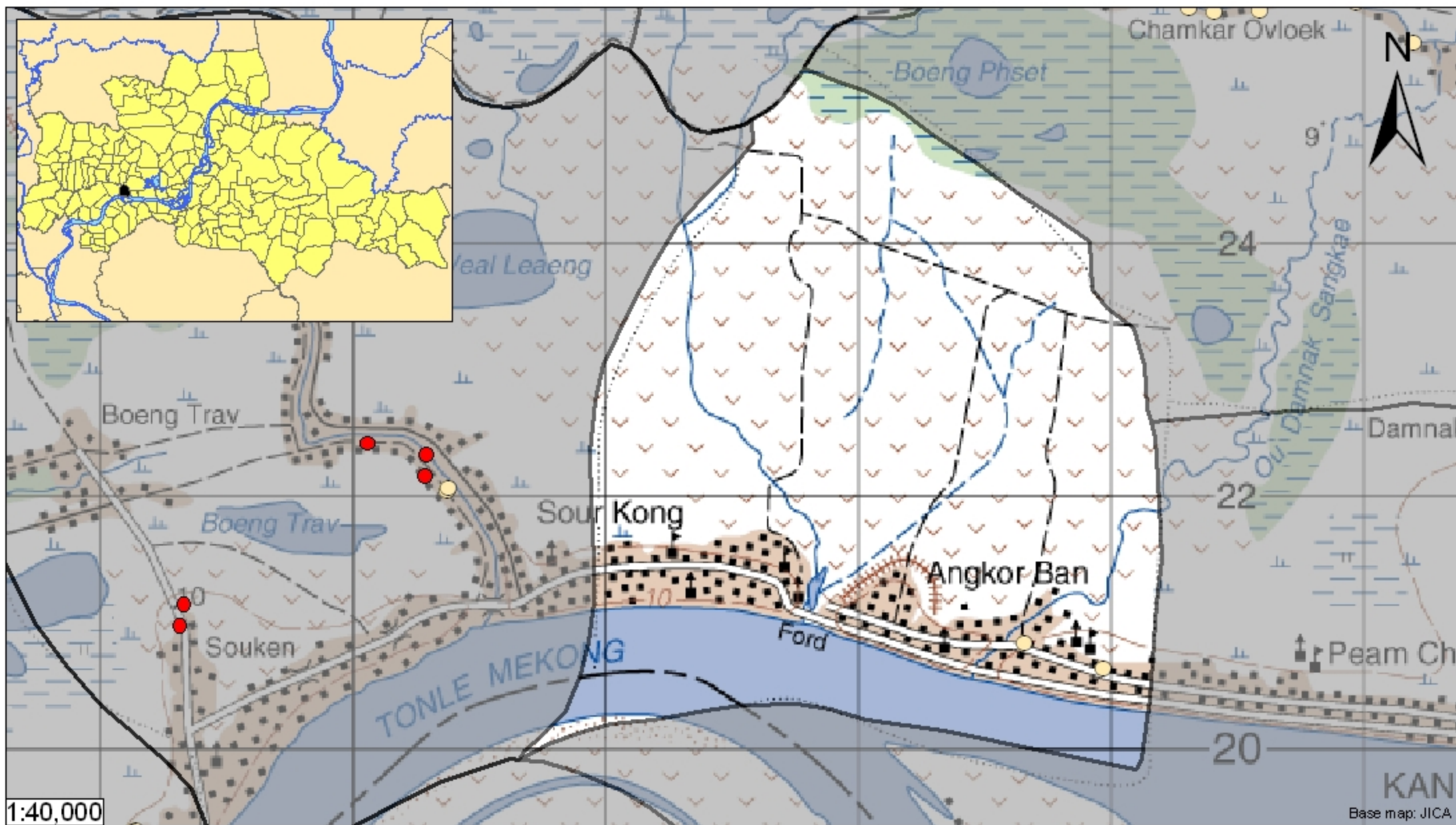
## ***Kampong Cham - Kang Meas - Angkor Ban (N/A)***



Angkor Ban is located in the district of Kang Meas. The population of this commune is approximately 9366 (2004). Groundwater sample collection occurred in April 2008 and consisted of the sampling of 2 tube wells throughout the commune. The attached figure presents the location of Angkor Ban within Kampong Cham as well as groundwater sample locations and exceedances of health-impacting contaminants (when applicable).

### **Groundwater Quality Rating**

An insufficient number of samples were collected in this commune to adequately characterize groundwater conditions. A groundwater quality rating is not presented for this commune.



## Tube Well Sample Locations and Health-Based Exceedances

*Angkor Ban - Kang Meas - Kampong Cham - Cambodia*

Resource Development International - Cambodia

[www.rdic.org](http://www.rdic.org)

June 2008



- Arsenic
  - Manganese
  - Fluoride
  - Nitrate
  - No Exceedance
  - Commune Boundary
  - Provincial Boundary
- Locations exceeding the Cambodian water quality standards for major health-impacting contaminants have been colour-coded and arranged such that they do not overlap.