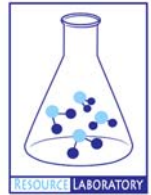




# **GROUNDWATER QUALITY ANALYSIS REPORT**

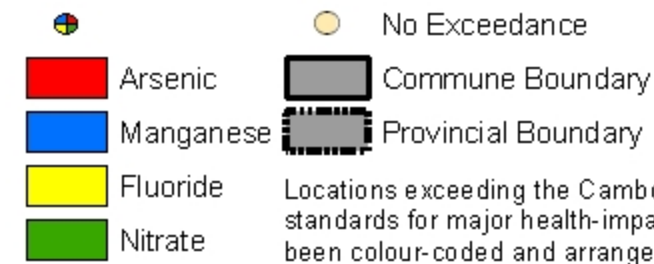
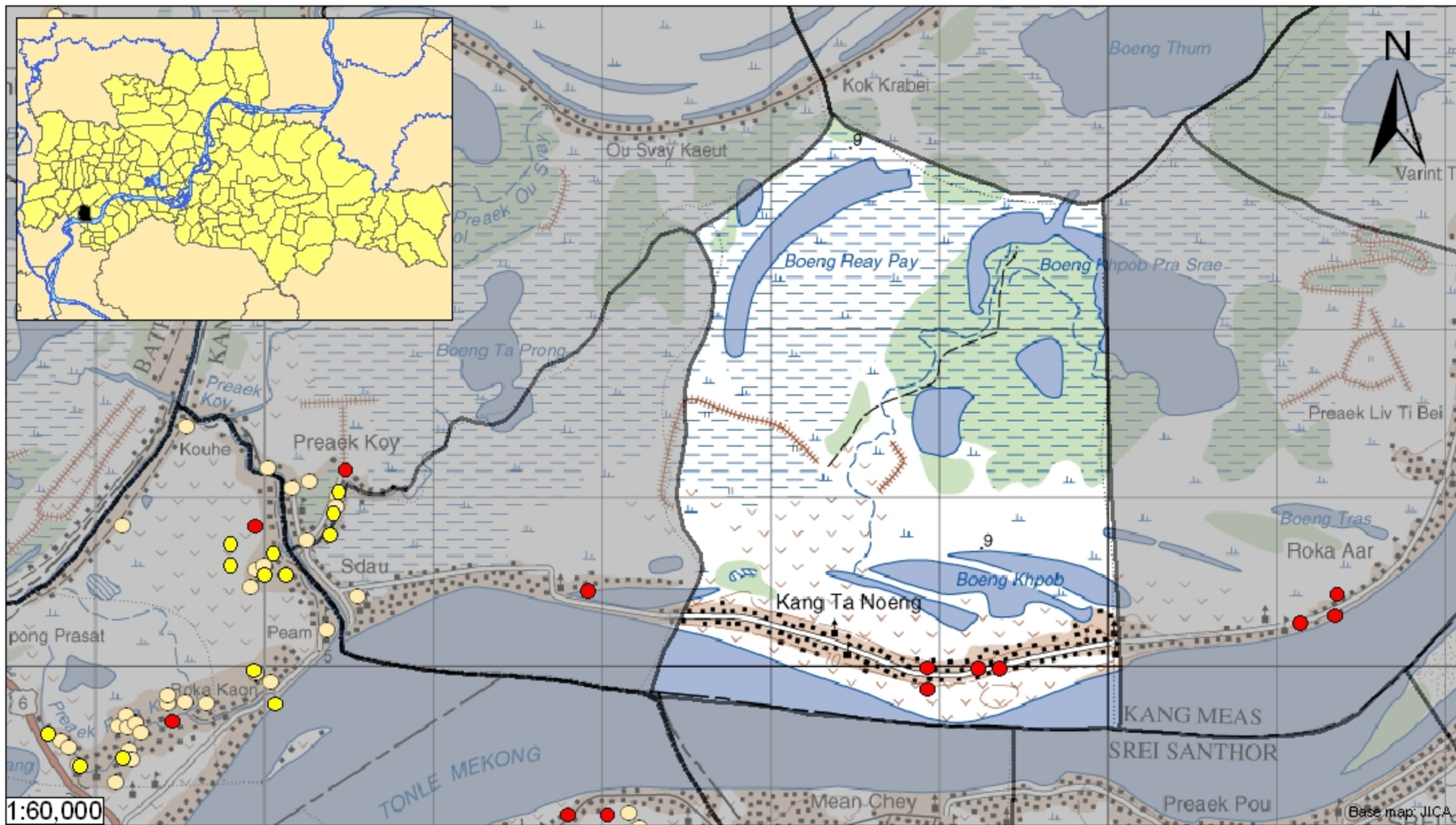
## ***Kampong Cham - Kang Meas - Kang Ta Noeng (N/A)***



Kang Ta Noeng is located in the district of Kang Meas. The population of this commune is approximately 8415 (2004). Groundwater sample collection occurred in April 2008 and consisted of the sampling of 4 tube wells throughout the commune. The attached figure presents the location of Kang Ta Noeng within Kampong Cham as well as groundwater sample locations and exceedances of health-impacting contaminants (when applicable).

### **Groundwater Quality Rating**

An insufficient number of samples were collected in this commune to adequately characterize groundwater conditions. A groundwater quality rating is not presented for this commune.



## Tube Well Sample Locations and Health-Based Exceedances

### Kang Ta Noeng - Kang Meas - Kampong Cham - Cambodia

Resource Development International - Cambodia  
[www.rdic.org](http://www.rdic.org)  
 June 2008

