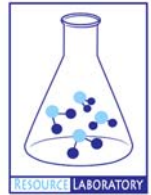




GROUNDWATER QUALITY ANALYSIS REPORT

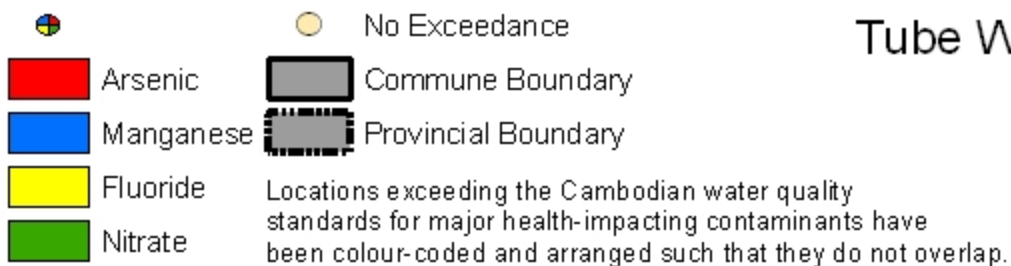
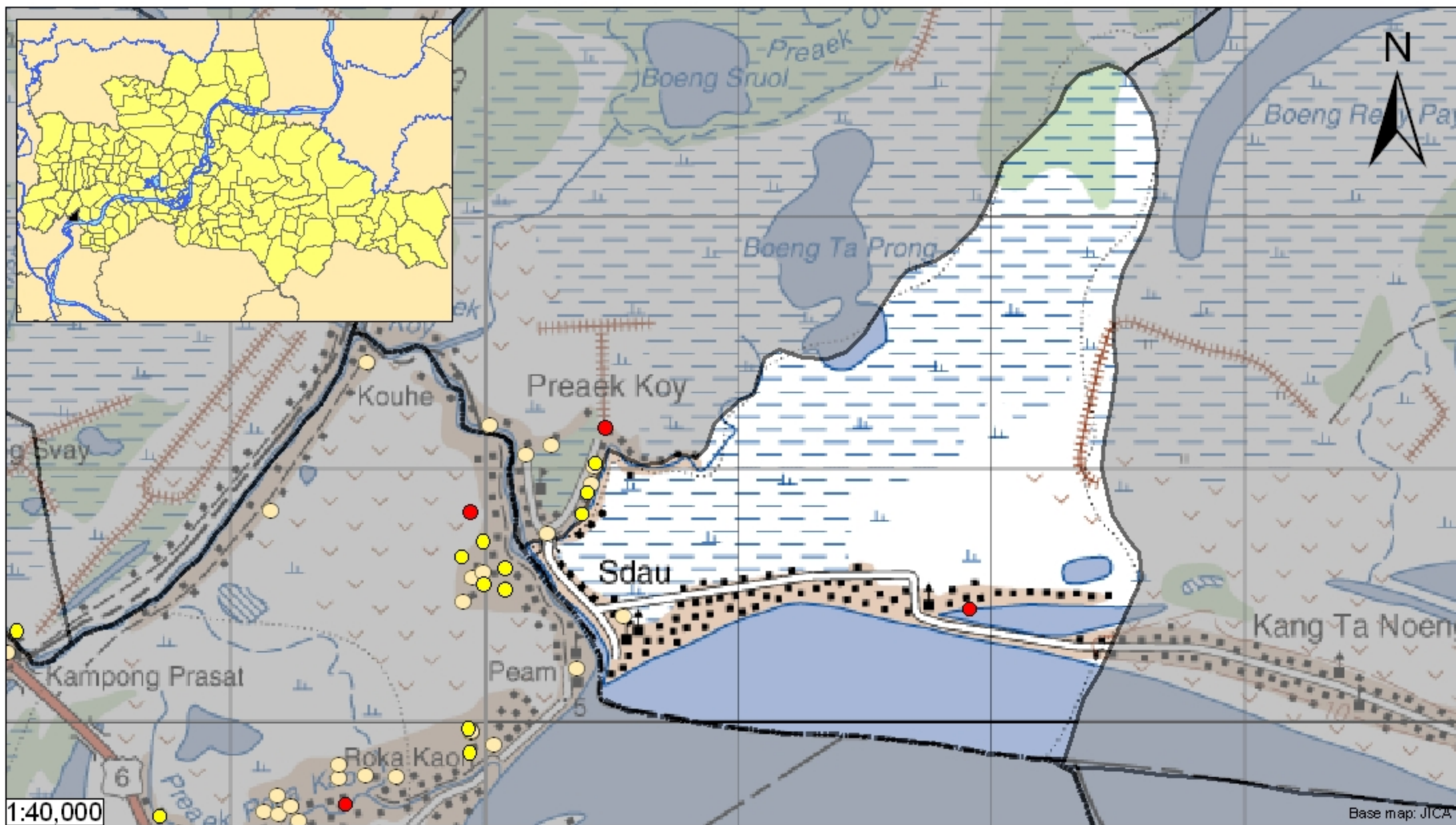
Kampong Cham - Kang Meas - Sdau (N/A)



Sdau is located in the district of Kang Meas. The population of this commune is approximately 5239 (2004). Groundwater sample collection occurred in April 2008 and consisted of the sampling of 2 tube wells throughout the commune. The attached figure presents the location of Sdau within Kampong Cham as well as groundwater sample locations and exceedances of health-impacting contaminants (when applicable).

Groundwater Quality Rating

An insufficient number of samples were collected in this commune to adequately characterize groundwater conditions. A groundwater quality rating is not presented for this commune.



Tube Well Sample Locations and Health-Based Exceedances

Sdau - Kang Meas - Kampong Cham - Cambodia

Resource Development International - Cambodia
www.rdic.org
 June 2008

