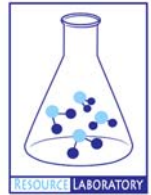




GROUNDWATER QUALITY ANALYSIS REPORT

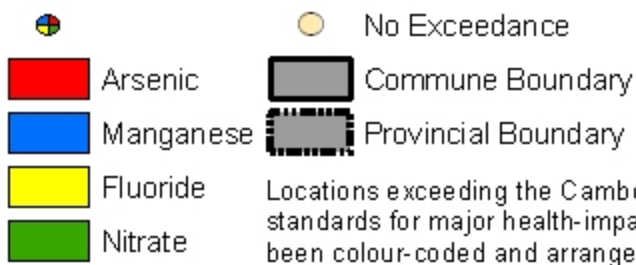
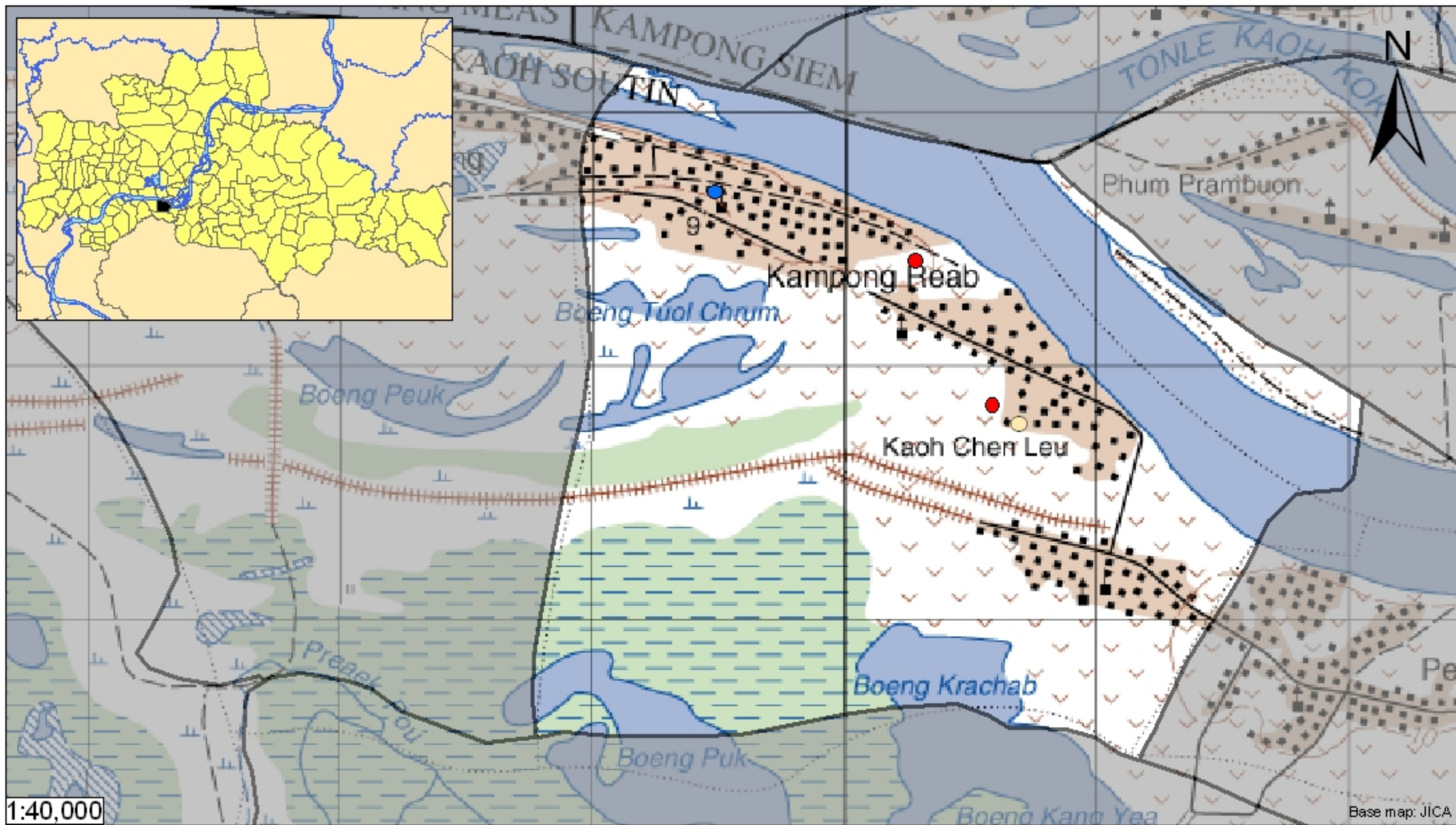
Kampong Cham - Kaoh Soutin - Kampong Reap (N/A)



Kampong Reap is located in the district of Kaoh Soutin. The population of this commune is approximately 8044 (2004). Groundwater sample collection occurred in July 2008 and consisted of the sampling of 4 tube wells throughout the commune. The attached figure presents the location of Kampong Reap within Kampong Cham as well as groundwater sample locations and exceedances of health-impacting contaminants (when applicable).

Groundwater Quality Rating

An insufficient number of samples were collected in this commune to adequately characterize groundwater conditions. A groundwater quality rating is not presented for this commune.



Tube Well Sample Locations and Health-Based Exceedances

Kampong Reab - Kaoh Soutin - Kampong Cham - Cambodia

Resource Development International - Cambodia
www.rdic.org
 June 2008

