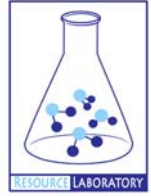




# **GROUNDWATER QUALITY ANALYSIS REPORT**

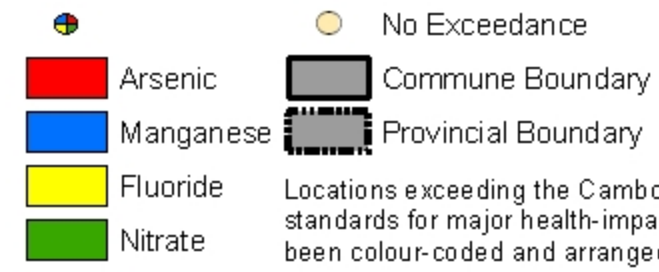
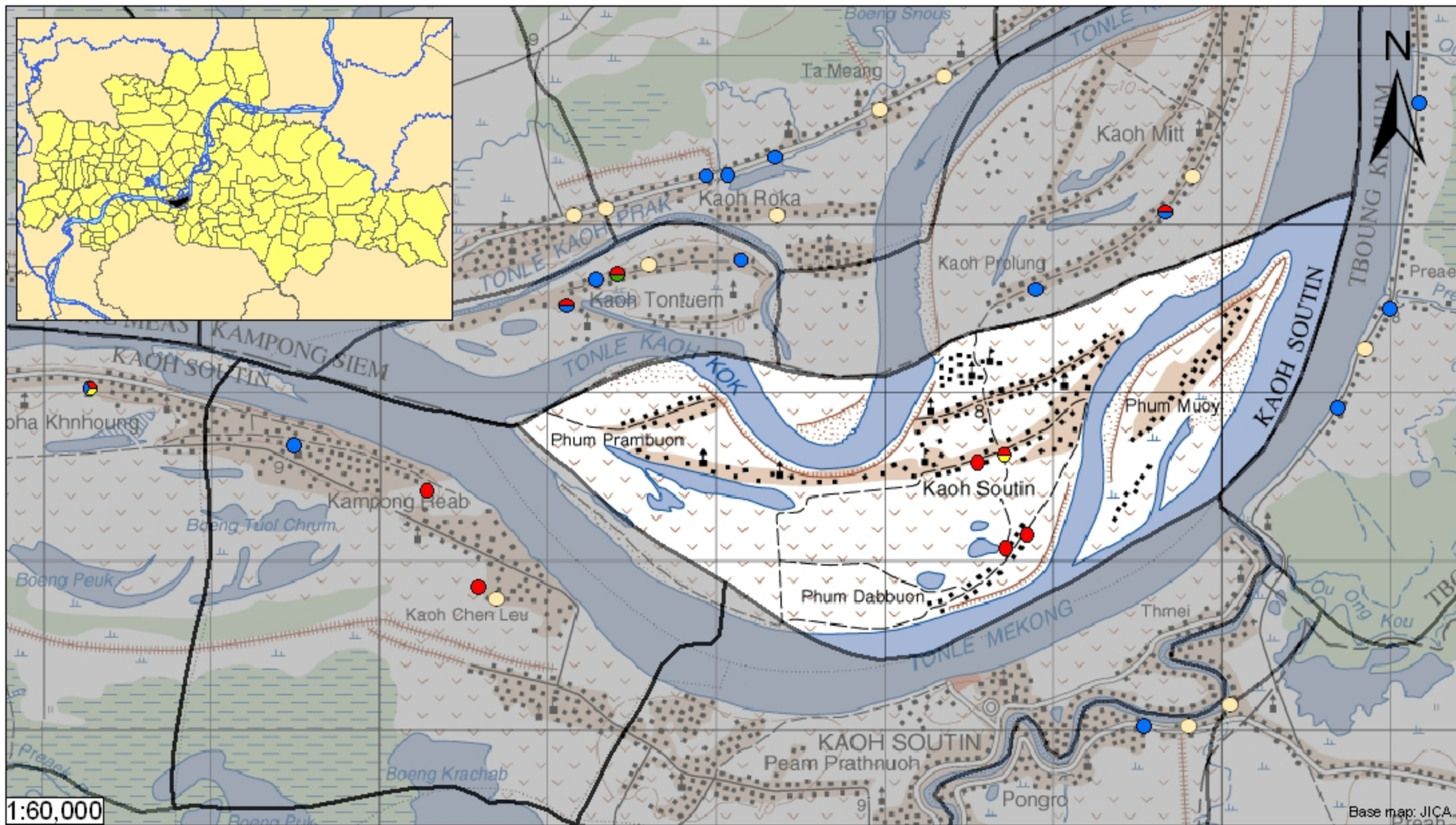
## ***Kampong Cham - Kaoh Soutin - Kaoh Soutin (N/A)***



Kaoh Soutin is located in the district of Kaoh Soutin. The population of this commune is approximately 11678 (2004). Groundwater sample collection occurred in July 2008 and consisted of the sampling of 4 tube wells throughout the commune. The attached figure presents the location of Kaoh Soutin within Kampong Cham as well as groundwater sample locations and exceedances of health-impacting contaminants (when applicable).

### **Groundwater Quality Rating**

An insufficient number of samples were collected in this commune to adequately characterize groundwater conditions. A groundwater quality rating is not presented for this commune.



## Tube Well Sample Locations and Health-Based Exceedances

### *Kaoh Soutin - Kampong Cham - Cambodia*