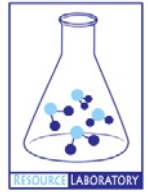




GROUNDWATER QUALITY ANALYSIS REPORT

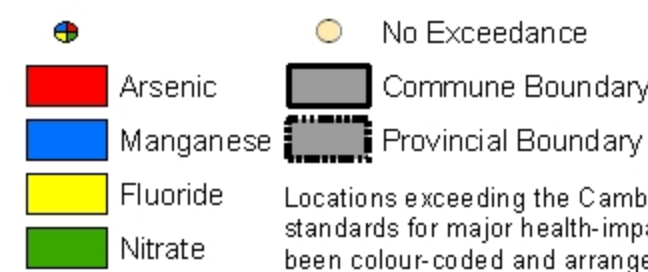
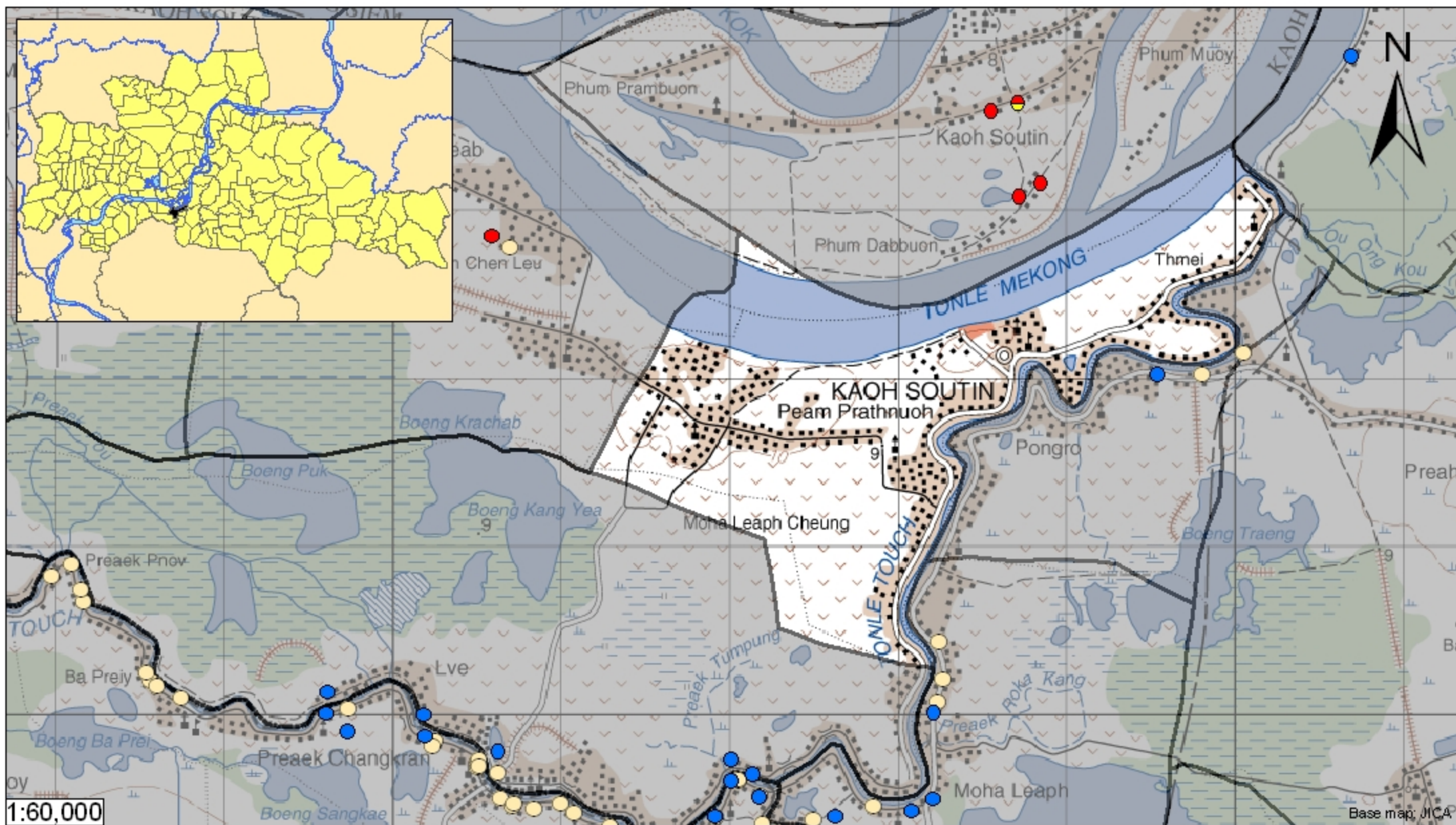
Kampong Cham – Kaoh Soutin– Peam Prathnuoh (N/A)



Peam Prathnuoh is located in the district of Kaoh Soutin. The population of this commune is approximately 12106 (2004). No tube wells were sampled in the commune. The attached figure presents the location of Peam Prathnuoh within Kampong Cham as well as groundwater sample locations and exceedances of health-impacting contaminants in surrounding communes.

Groundwater Quality Rating

The groundwater quality rating for Peam Prathnuoh cannot be reported.



Locations exceeding the Cambodian water quality standards for major health-impacting contaminants have been colour-coded and arranged such that they do not overlap.

Tube Well Sample Locations and Health-Based Exceedances

Peam Prathnuoh - Kaoh Soutin - Kampong Cham - Cambodia