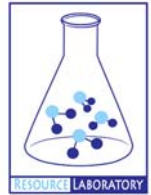




# **GROUNDWATER QUALITY ANALYSIS REPORT**

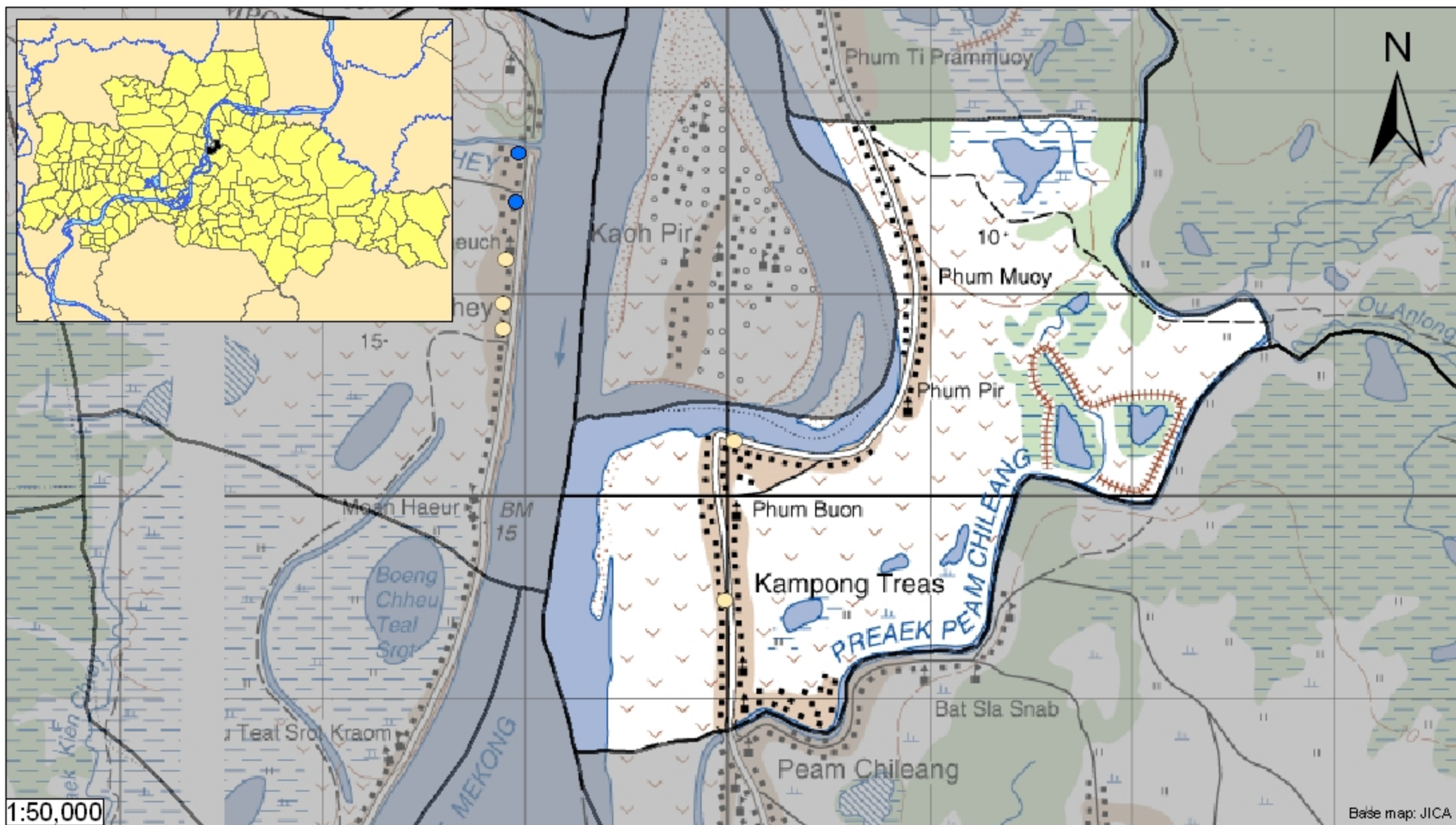
## ***Kampong Cham - Krouch Chhmar - Kampong Treas (N/A)***



Kompong Treas is located in the district of Krouch Chhmar. The population of this commune is approximately 8442 (2004). Groundwater sample collection occurred in October 2008 and consisted of the sampling of 2 tube wells throughout the commune. The attached figure presents the location of Kompong Treas within Kampong Cham as well as groundwater sample locations and exceedances of health-impacting contaminants (when applicable).

### **Groundwater Quality Rating**

An insufficient number of samples were collected in this commune to adequately characterize groundwater conditions. A groundwater quality rating is not presented for this commune.



## Tube Well Sample Locations and Health-Based Exceedances

*Kampong Treas - Krouch Chhmar - Kampong Cham - Cambodia*

Resource Development International - Cambodia

[www.rdic.org](http://www.rdic.org)

June 2008



- Arsenic
  - Manganese
  - Fluoride
  - Nitrate
  - No Exceedance
  - Commune Boundary
  - Provincial Boundary
- Locations exceeding the Cambodian water quality standards for major health-impacting contaminants have been colour-coded and arranged such that they do not overlap.