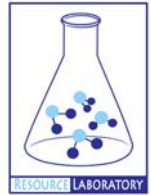




# **GROUNDWATER QUALITY ANALYSIS REPORT**

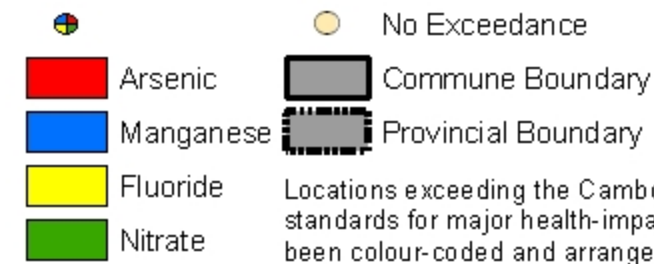
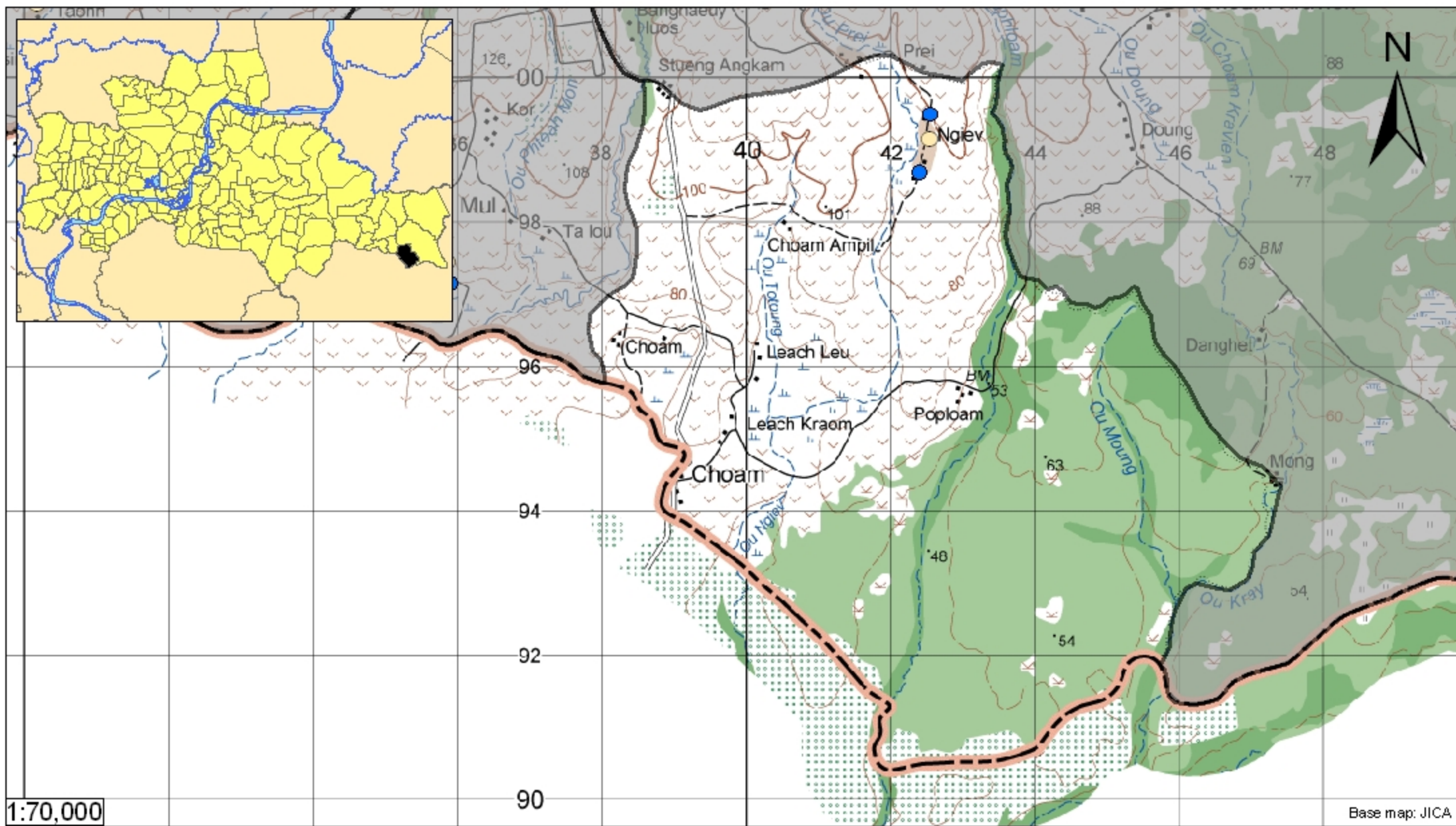
## ***Kampong Cham - Memot - Choam (N/A)***



Choam is located in the district of Memot. The population of this commune is approximately 4076 (2004). Groundwater sample collection occurred in October 2008 and consisted of the sampling of 3 tube wells throughout the commune. The attached figure presents the location of Choam within Kampong Cham as well as groundwater sample locations and exceedances of health-impacting contaminants (when applicable).

### **Groundwater Quality Rating**

An insufficient number of samples were collected in this commune to adequately characterize groundwater conditions. A groundwater quality rating is not presented for this commune.



## Tube Well Sample Locations and Health-Based Exceedances

*Choam - Memot - Kampong Cham - Cambodia*

Resource Development International - Cambodia  
[www.rdic.org](http://www.rdic.org)  
 June 2008

