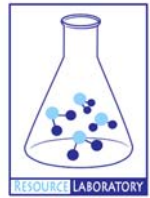




GROUNDWATER QUALITY ANALYSIS REPORT

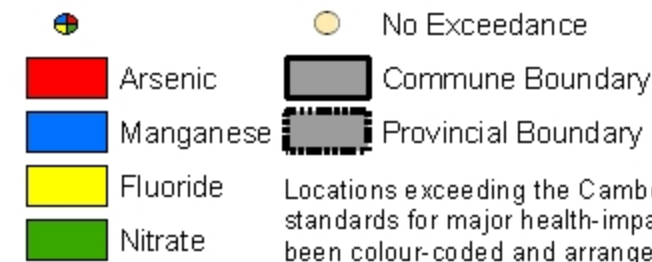
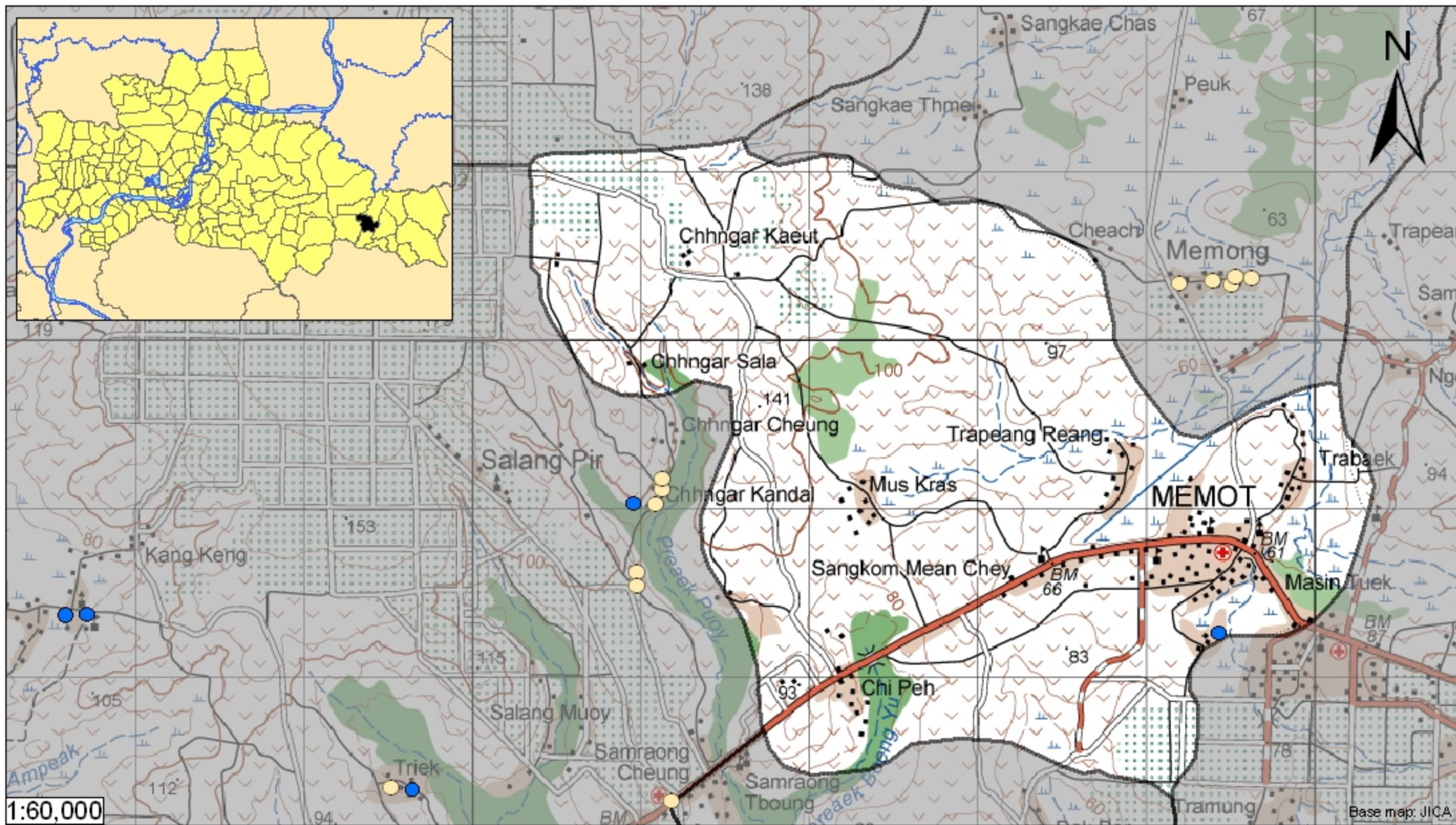
Kampong Cham - Memot - Memot (N/A)



Memot is located in the district of Memot. The population of this commune is approximately 13680 (2004). Groundwater sample collection occurred in October 2008 and consisted of the sampling of 1 tube wells throughout the commune. The attached figure presents the location of Memot within Kampong Cham as well as groundwater sample locations and exceedances of health-impacting contaminants (when applicable).

Groundwater Quality Rating

An insufficient number of samples were collected in this commune to adequately characterize groundwater conditions. A groundwater quality rating is not presented for this commune.



Tube Well Sample Locations and Health-Based Exceedances

Memot - Memot - Kampong Cham - Cambodia

Resource Development International - Cambodia
www.rdic.org
 June 2008

