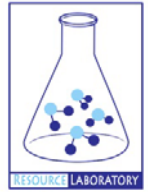




GROUNDWATER QUALITY ANALYSIS REPORT

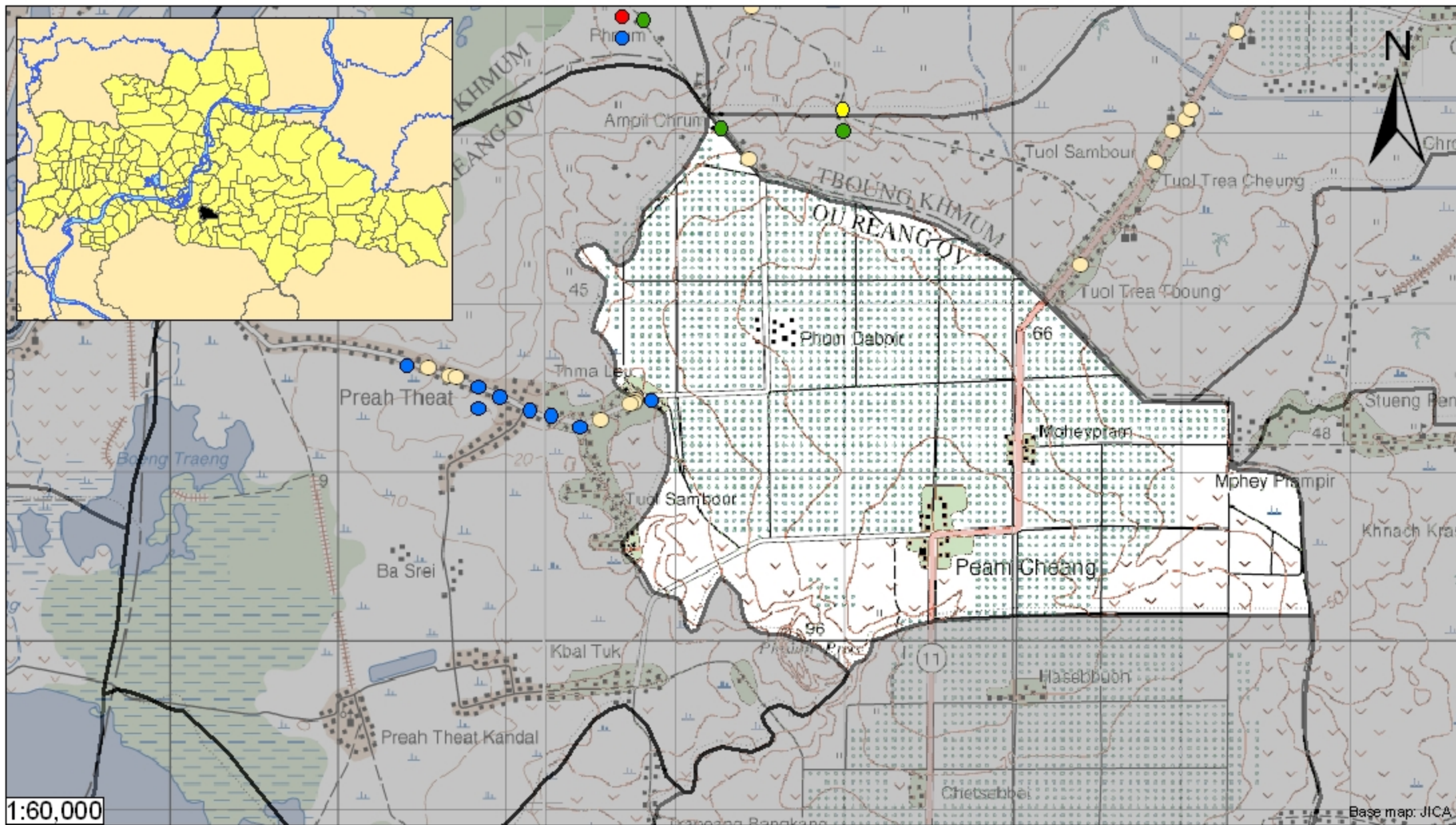
Kampong Cham – Ou Reang Ov – Peam Cheang (N/A)



Peam Cheang is located in the district of Ou Reang Ov. The population of this commune is approximately (N/A) (2004). No tube wells were sampled in the commune. The attached figure presents the location of Peam Cheang within Kampong Cham as well as groundwater sample locations and exceedances of health-impacting contaminants in surrounding communes.

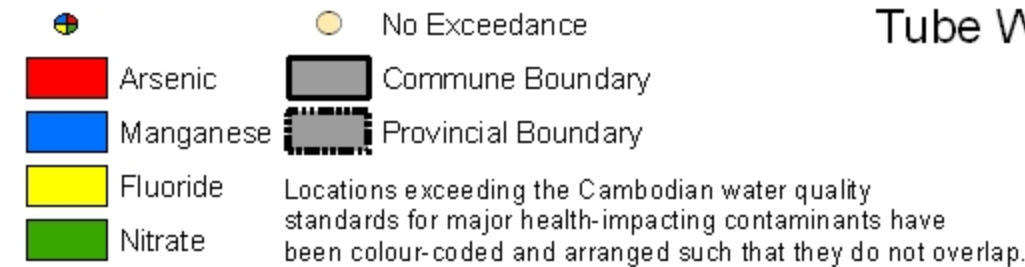
Groundwater Quality Rating

The groundwater quality rating for Peam Cheang cannot be reported.



1:60,000

Base map: JICA



Tube Well Sample Locations and Health-Based Exceedances

Peam Cheang - Ou Reang Ov - Kampong Cham - Cambodia

Resource Development International - Cambodia
www.rdic.org
 June 2008

