



# **GROUNDWATER QUALITY ANALYSIS REPORT**

## ***Kampong Cham - Ponhea Kraek - Kaong Kang (100F)***



Kaong Kang is located in the district of Ponhea Kraek. The population of this commune is approximately 13441 (2004). Groundwater sample collection occurred in September 2008 and consisted of the sampling of 14 tube wells throughout the commune. The attached figure presents the location of Kaong Kang within Kampong Cham as well as groundwater sample locations and exceedances of health-impacting contaminants (when applicable).

### **Groundwater Quality Rating**

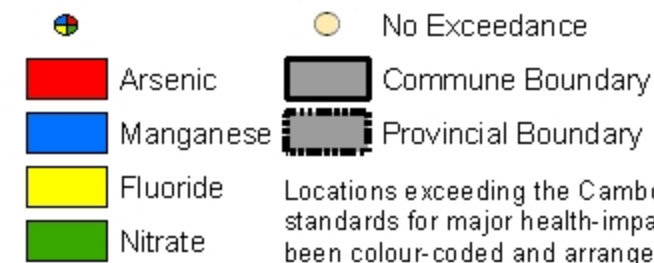
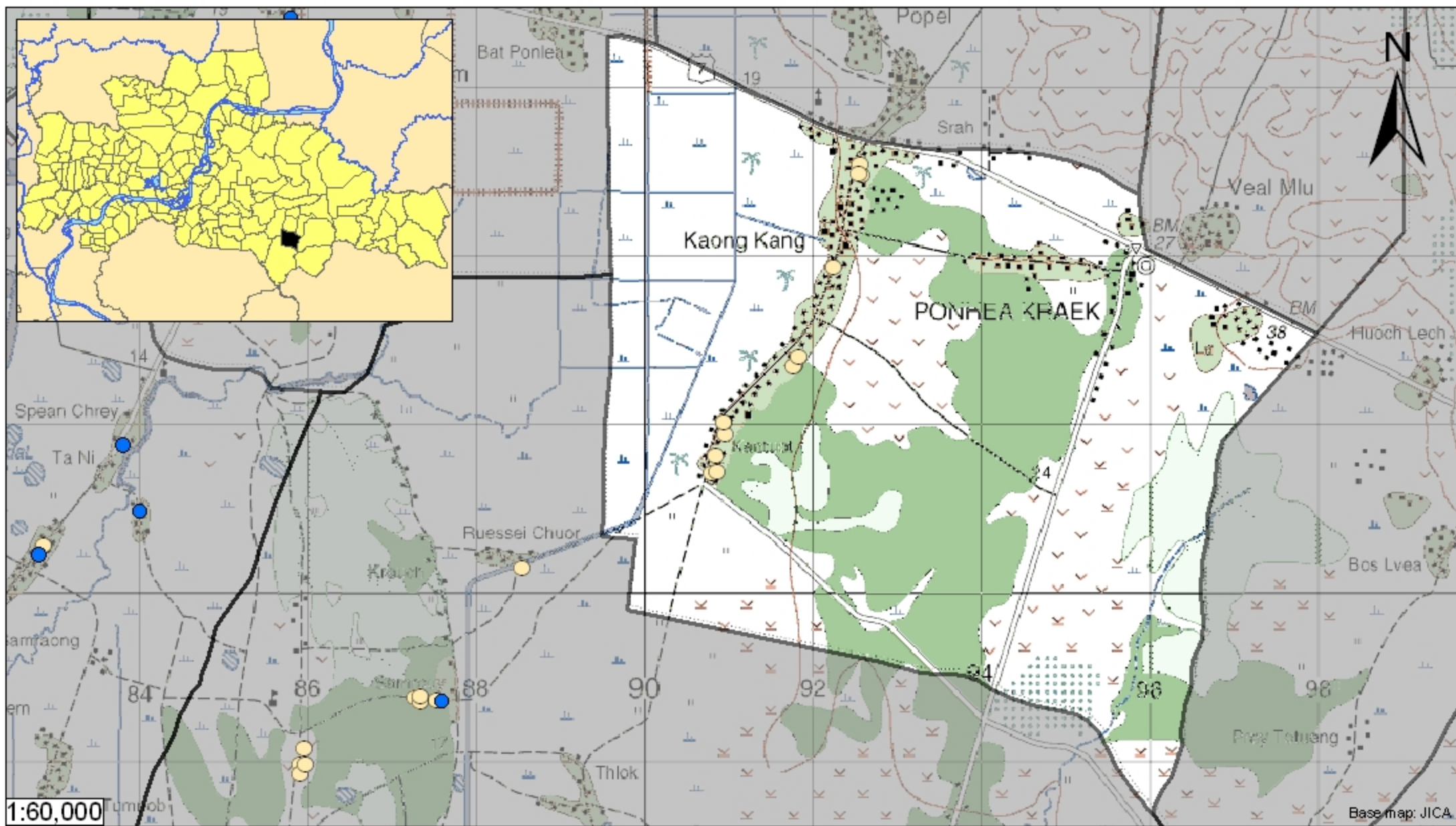
The groundwater quality rating for Kaong Kang is 100F. Therefore, the general safety of deep aquifer groundwater is excellent and the aesthetic quality of the water is poor, according to the contaminants measured and samples collected. The following two sections describe all major health and aesthetic contaminants that exceeded drinking water standards in at least one sample within the commune.

### **Contaminants of Potential Concern – Health**

No health-impacting contaminants of concern were observed within this commune.

### **Contaminants of Potential Concern – Aesthetic**

Iron - Elevated concentrations of Iron were observed within the commune. The estimated probability of encountering potentially unacceptable concentrations of Iron (>1 mg/L) in tube wells is 81%, based on the observed data. At elevated concentrations, Iron causes water to be cloudy and unpleasant to drink. An odor may also be encountered at high concentrations. Iron can also stain laundry, food (can cause discoloration of cooked rice), and leave deposits. Aeration allows oxygen to enter the water and react with Iron to form a compound which is insoluble in water. The newly formed solids will slowly settle to the bottom or can be removed more rapidly by filtration. Performing these procedures may reduce the concentration of Iron in water but follow-up testing is recommended to ensure water quality standards are met.



## Tube Well Sample Locations and Health-Based Exceedances

*Kaong Kang - Ponhea Kraek - Kampong Cham - Cambodia*

Resource Development International - Cambodia

[www.rdic.org](http://www.rdic.org)

June 2008

