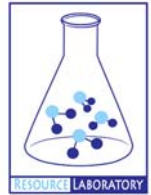




GROUNDWATER QUALITY ANALYSIS REPORT

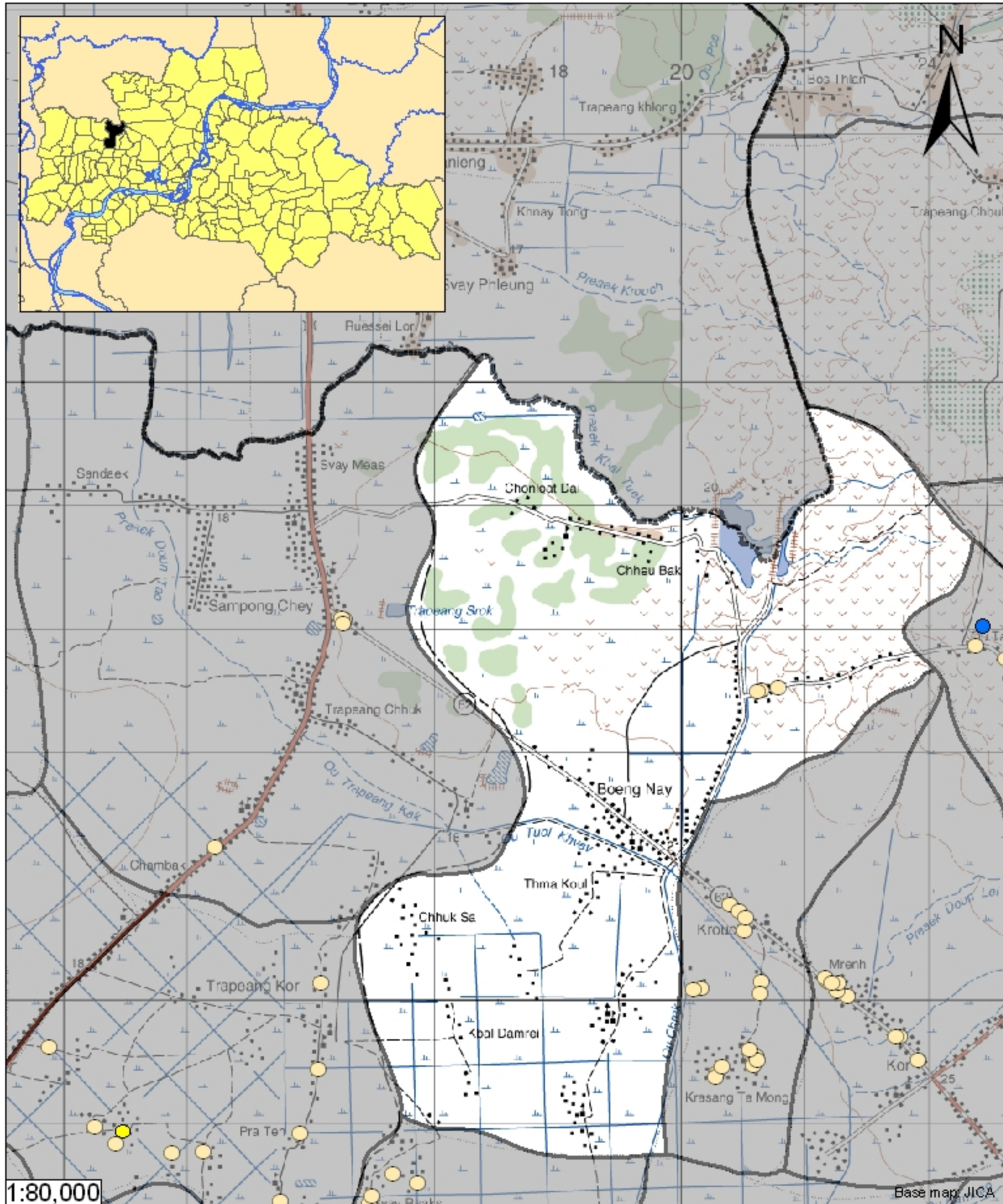
Kampong Cham - Prey Chhor - Boeng Nay (N/A)



Boeng Nay is located in the district of Prey Chhor. The population of this commune is approximately 13281 (2004). Groundwater sample collection occurred in May 2008 and consisted of the sampling of 3 tube wells throughout the commune. The attached figure presents the location of Boeng Nay within Kampong Cham as well as groundwater sample locations and exceedances of health-impacting contaminants (when applicable).

Groundwater Quality Rating

An insufficient number of samples were collected in this commune to adequately characterize groundwater conditions. A groundwater quality rating is not presented for this commune.



1:80,000

Base map: JICA

-  Arsenic
 -  Manganese
 -  Fluoride
 -  Nitrate
 -  No Exceedance
 -  Commune Boundary
 -  Provincial Boundary
- Locations exceeding the Cambodian water quality standards for major health-impacting contaminants have been colour-coded and arranged such that they do not overlap.

Tube Well Sample Locations and Health-Based Exceedances

Boeng Nay - Prey Chhor - Kampong Cham - Cambodia

Resource Development International - Cambodia
www.rdic.org
 June 2008

