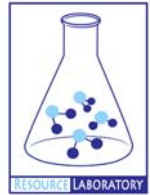




GROUNDWATER QUALITY ANALYSIS REPORT

Kampong Cham - Srei Santhor - Preaek Rumdeng (1F)



Preaek Rumdeng is located in the district of Srei Santhor. The population of this commune is approximately 10412 (2004). Groundwater sample collection occurred in April 2008 and consisted of the sampling of 6 tube wells throughout the commune. The attached figure presents the location of Preaek Rumdeng within Kampong Cham as well as groundwater sample locations and exceedances of health-impacting contaminants (when applicable).

Groundwater Quality Rating

The groundwater quality rating for Preaek Rumdeng is 1F. Therefore, the general safety of deep aquifer groundwater is extremely poor and the aesthetic quality of the water is poor, according to the contaminants measured and samples collected. The following two sections describe all major health and aesthetic contaminants that exceeded drinking water standards in at least one sample within the commune.

Contaminants of Potential Concern – Health

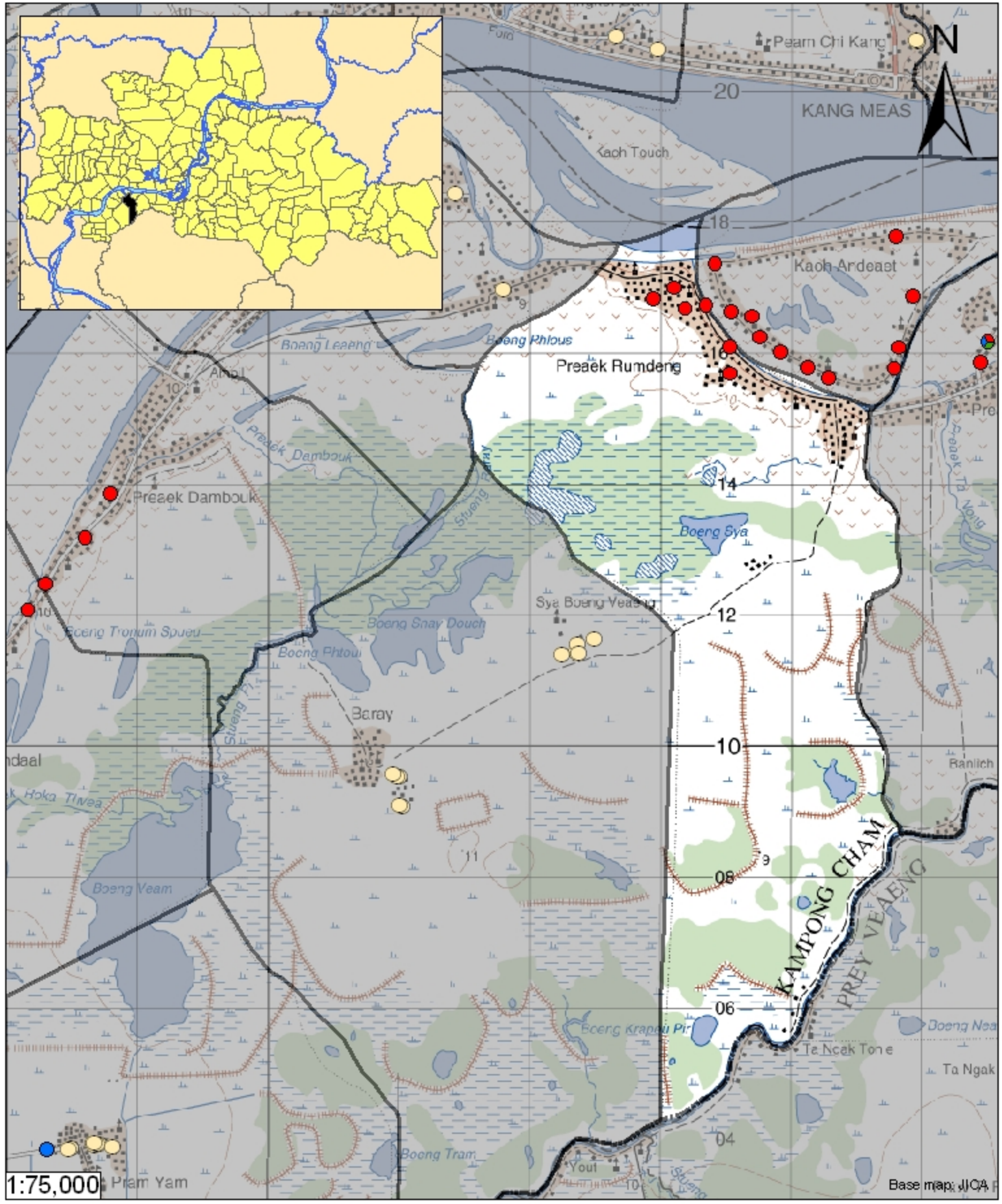
Arsenic - Elevated concentrations of Arsenic were observed within the commune. The estimated probability of encountering unacceptable concentrations of Arsenic (>50 ppb) in tube wells is 100%, based on the observed data. Long-term (5 to 10 year) exposure to elevated concentrations of Arsenic can cause arsenicosis (debilitating skin disease), increased risks of contracting cancer, as well as other negative health impacts.

Contaminants of Potential Concern – Aesthetic

Iron - Elevated concentrations of Iron were observed within the commune. The estimated probability of encountering potentially unacceptable concentrations of Iron (>1 mg/L) in tube wells is 84%, based on the observed data. At elevated concentrations, Iron causes water to be cloudy and unpleasant to drink. An odor may also be encountered at high concentrations. Iron can also stain laundry, food (can cause discoloration of cooked rice), and leave deposits. Aeration allows oxygen to enter the water and react with Iron to form a compound which is insoluble in water. The newly formed solids will slowly settle to the bottom or can be removed more rapidly by filtration. Performing these procedures

may reduce the concentration of Iron in water but follow-up testing is recommended to ensure water quality standards are met.

Turbidity - Elevated levels of Turbidity were observed within the commune. The estimated probability of encountering potentially unacceptable levels of Turbidity (>20 ntu) in tube wells is 28%, based on the observed data. Turbid or cloudy water appears unpleasant to the eye and is more likely have an unpleasant taste or odor. Turbidity can be reduced by filtration.



-  Arsenic
 -  Manganese
 -  Fluoride
 -  Nitrate
 -  No Exceedance
 -  Commune Boundary
 -  Provincial Boundary
- Locations exceeding the Cambodian water quality standards for major health-impacting contaminants have been colour-coded and arranged such that they do not overlap.

Tube Well Sample Locations and Health-Based Exceedances

Preaek Rumdeng - Srei Santhor - Kampong Cham - Cambodia

Resource Development International - Cambodia
www.rdic.org
 June 2008

