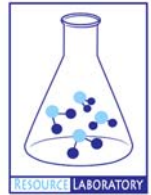




GROUNDWATER QUALITY ANALYSIS REPORT

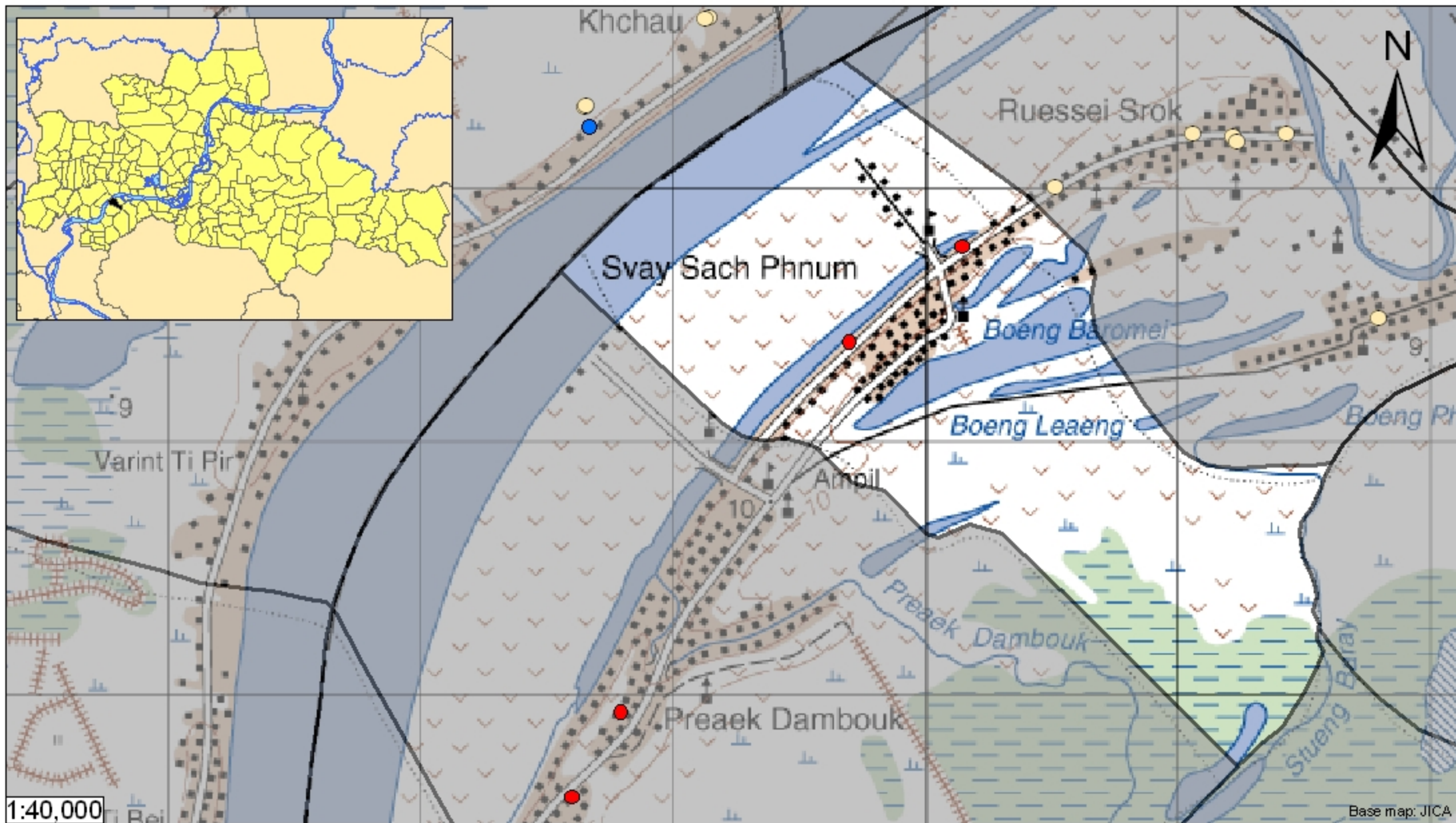
Kampong Cham - Srei Santhor - Svay Sach Phnum (N/A)










Svay Sach Phnum is located in the district of Srei Santhor. The population of this commune is approximately 5210 (2004). Groundwater sample collection occurred in April 2008 and consisted of the sampling of 2 tube wells throughout the commune. The attached figure presents the location of Svay Sach Phnum within Kampong Cham as well as groundwater sample locations and exceedances of health-impacting contaminants (when applicable).

Groundwater Quality Rating

An insufficient number of samples were collected in this commune to adequately characterize groundwater conditions. A groundwater quality rating is not presented for this commune.



- | | | | |
|--|-----------|--|---------------------|
|  | Arsenic |  | No Exceedance |
|  | Manganese |  | Commune Boundary |
|  | Fluoride |  | Provincial Boundary |
|  | Nitrate | Locations exceeding the Cambodian water quality standards for major health-impacting contaminants have been colour-coded and arranged such that they do not overlap. | |

Tube Well Sample Locations and Health-Based Exceedances

Svay Sach Phnum - Srei Santhor - Kampong Cham - Cambodia

Resource Development International - Cambodia
www.rdic.org
 June 2008

