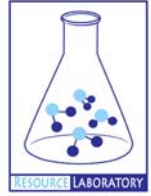




# **GROUNDWATER QUALITY ANALYSIS REPORT**

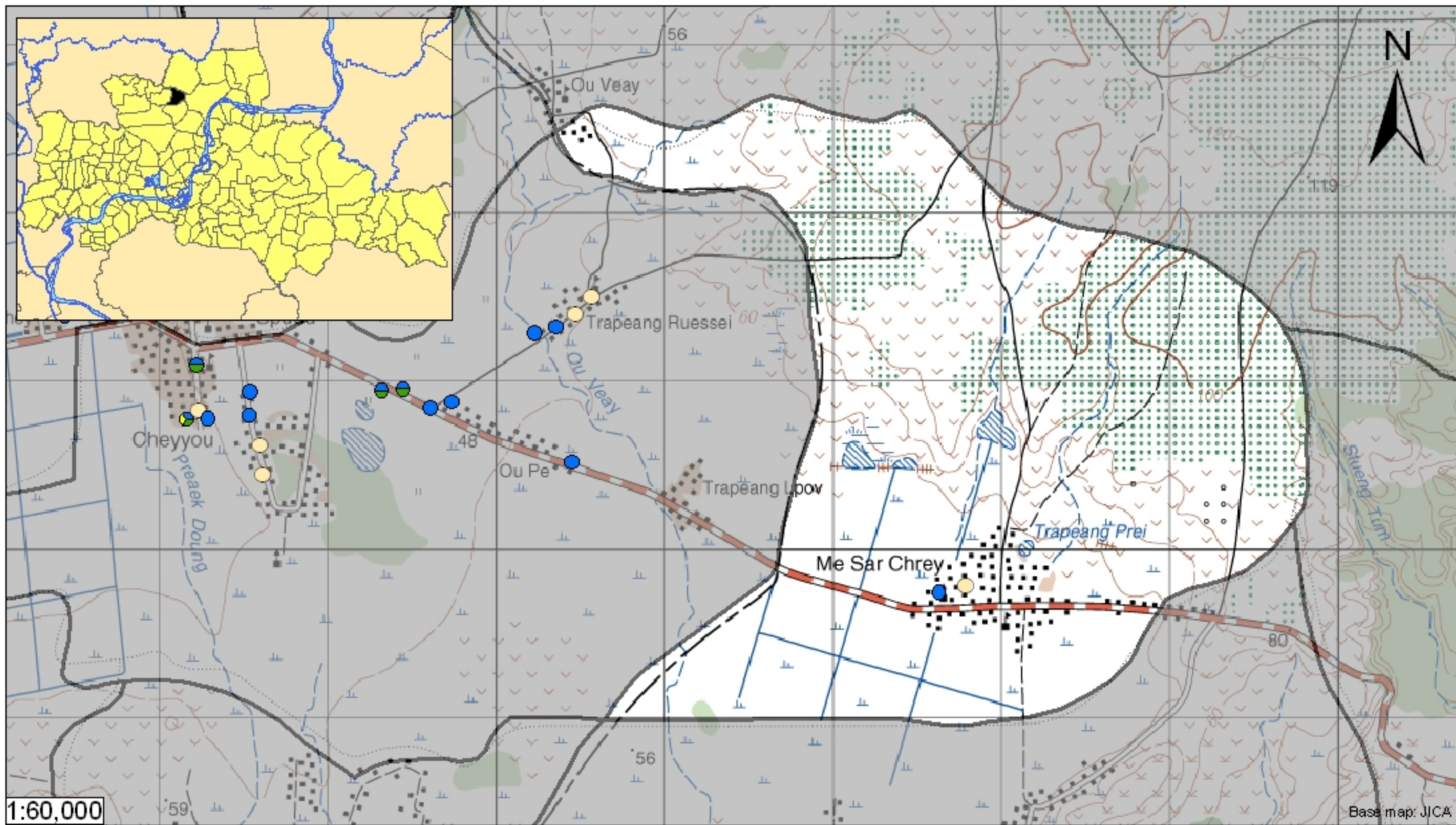
## ***Kampong Cham - Stueng Trang - Me Sar Chrey (N/A)***



Me Sar Chrey is located in the district of Stueng Trang. The population of this commune is approximately 12762 (2004). Groundwater sample collection occurred in August 2008 and consisted of the sampling of 2 tube wells throughout the commune. The attached figure presents the location of Me Sar Chrey within Kampong Cham as well as groundwater sample locations and exceedances of health-impacting contaminants (when applicable).

### **Groundwater Quality Rating**

An insufficient number of samples were collected in this commune to adequately characterize groundwater conditions. A groundwater quality rating is not presented for this commune.



1:60,000

Base map: JICA

- Arsenic
  - Manganese
  - Fluoride
  - Nitrate
  - No Exceedance
  - Commune Boundary
  - Provincial Boundary
- Locations exceeding the Cambodian water quality standards for major health-impacting contaminants have been colour-coded and arranged such that they do not overlap.

## Tube Well Sample Locations and Health-Based Exceedances

*Me Sar Chrey - Stueng Trang - Kampong Cham - Cambodia*