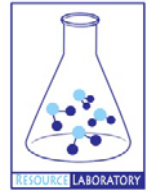




GROUNDWATER QUALITY ANALYSIS REPORT

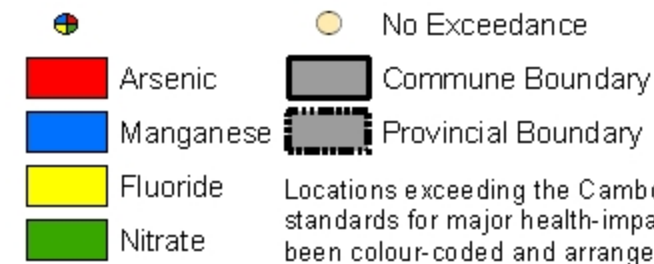
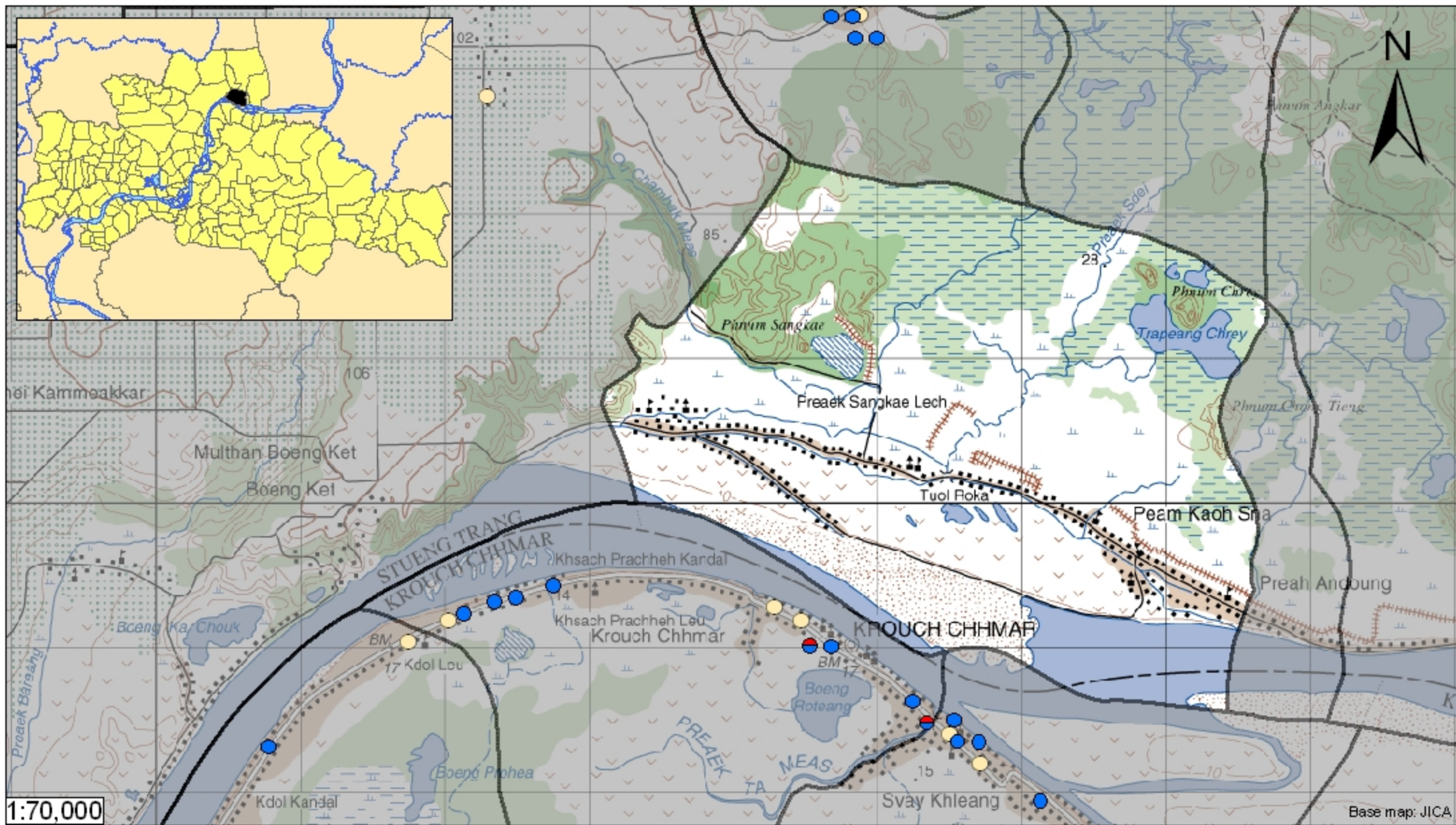
Kampong Cham – Stueng Trang – Peam Kaoh Sna (N/A)



Peam Kaoh Sna is located in the district of Stueng Trang. The population of this commune is approximately 11331 (2004). No tube wells were sampled in the commune. The attached figure presents the location of Peam Kaoh Sna within Kampong Cham as well as groundwater sample locations and exceedances of health-impacting contaminants in surrounding communes.

Groundwater Quality Rating

The groundwater quality rating for Peam Kaoh Sna cannot be reported.



Tube Well Sample Locations and Health-Based Exceedances

Peam Kaoh Sna - Stueng Trang - Kampong Cham - Cambodia

Resource Development International - Cambodia

www.rdic.org

June 2008

