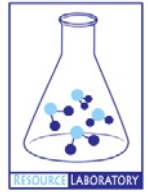




GROUNDWATER QUALITY ANALYSIS REPORT

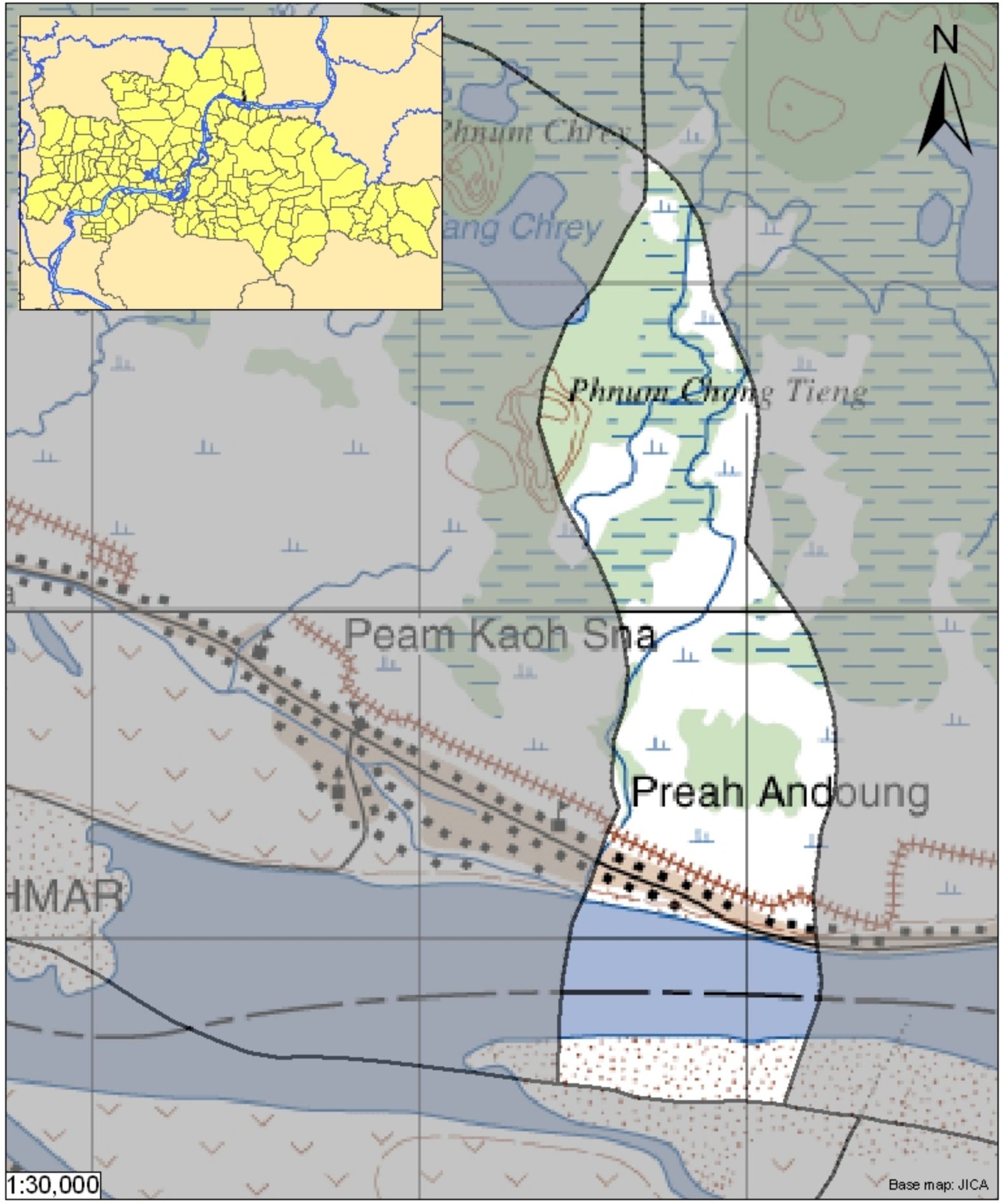
Kampong Cham – Stueng Trang – Preah Andoung (N/A)



Preah Andoung is located in the district of Stueng Trang. The population of this commune is approximately 2626 (2004). No tube wells were sampled in the commune. The attached figure presents the location of Preah Andoung within Kampong Cham as well as groundwater sample locations and exceedances of health-impacting contaminants in surrounding communes.








Groundwater Quality Rating

The groundwater quality rating for Preah Andoung cannot be reported.



1:30,000

Base map: JICA

-  Arsenic
 -  Manganese
 -  Fluoride
 -  Nitrate
 -  No Exceedance
 -  Commune Boundary
 -  Provincial Boundary
- Locations exceeding the Cambodian water quality standards for major health-impacting contaminants have been colour-coded and arranged such that they do not overlap.

Tube Well Sample Locations and Health-Based Exceedances

Preah Andoung - Stueng Trang - Kampong Cham - Cambodia

Resource Development International - Cambodia
www.rdic.org
 June 2008

