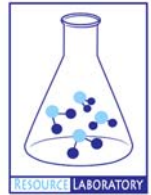




GROUNDWATER QUALITY ANALYSIS REPORT

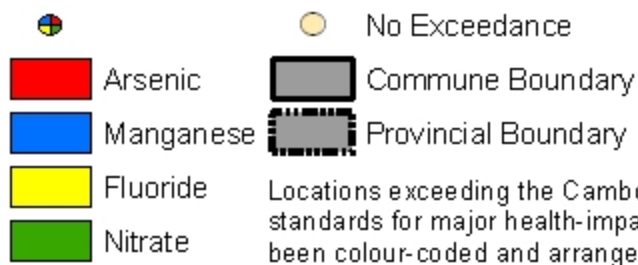
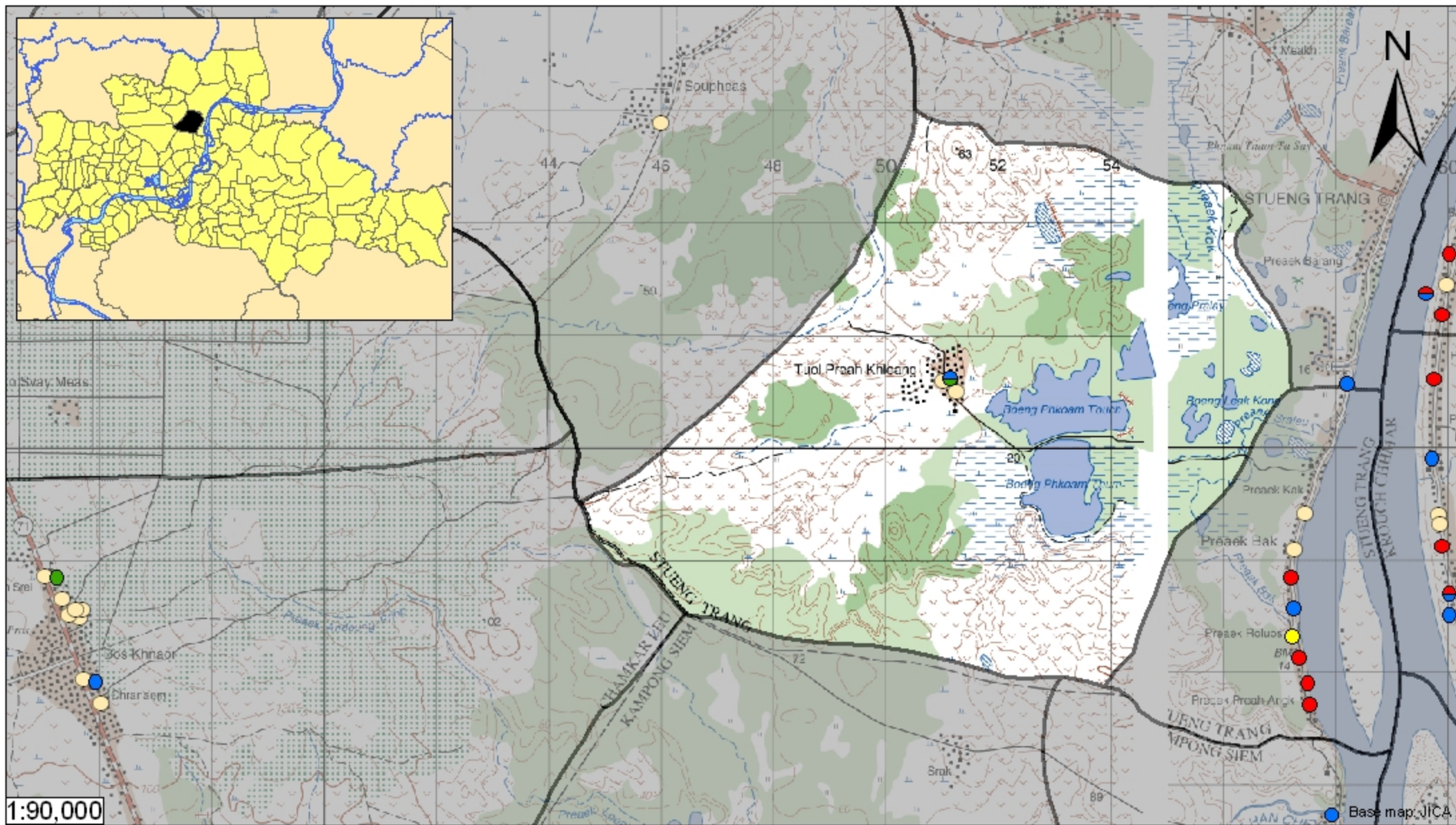
Kampong Cham - Stueng Trang - Tuol Preah Khleang (N/A)



Tuol Preah Khleang is located in the district of Stueng Trang. The population of this commune is approximately 4693 (2004). Groundwater sample collection occurred in July 2008 and consisted of the sampling of 3 tube wells throughout the commune. The attached figure presents the location of Tuol Preah Khleang within Kampong Cham as well as groundwater sample locations and exceedances of health-impacting contaminants (when applicable).

Groundwater Quality Rating

An insufficient number of samples were collected in this commune to adequately characterize groundwater conditions. A groundwater quality rating is not presented for this commune.



Tube Well Sample Locations and Health-Based Exceedances

Tuol Preah Khleang - Stung Trang - Kampong Cham - Cambodia

Resource Development International - Cambodia

www.rdic.org

June 2008

