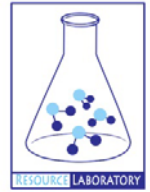




## **GROUNDWATER QUALITY ANALYSIS REPORT**

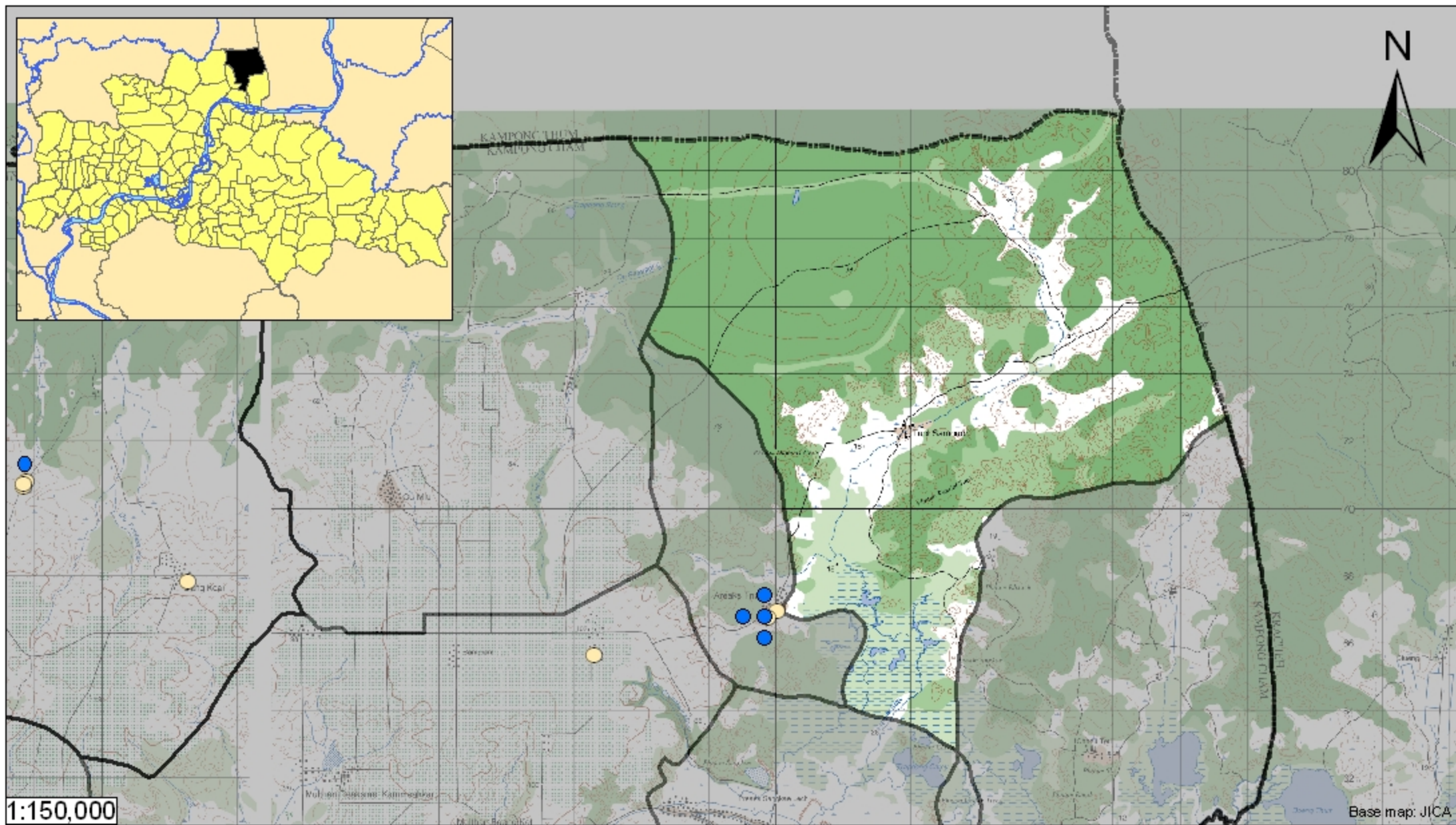
### ***Kampong Cham – Stueng Trang – Tuol Sambuor (N/A)***



Tuol Sambuor is located in the district of Stueng Trang. The population of this commune is approximately 2248 (2004). No tube wells were sampled in the commune. The attached figure presents the location of Tuol Sambuor within Kampong Cham as well as groundwater sample locations and exceedances of health-impacting contaminants in surrounding communes.








#### **Groundwater Quality Rating**

The groundwater quality rating for Tuol Sambuor cannot be reported.



1:150,000

Base map: JICA

-  Arsenic
  -  Manganese
  -  Fluoride
  -  Nitrate
  -  No Exceedance
  -  Commune Boundary
  -  Provincial Boundary
- Locations exceeding the Cambodian water quality standards for major health-impacting contaminants have been colour-coded and arranged such that they do not overlap.

## Tube Well Sample Locations and Health-Based Exceedances

*Tuol Sambuor - Stueng Trang - Kampong Cham - Cambodia*

Resource Development International - Cambodia  
[www.rdic.org](http://www.rdic.org)  
 June 2008

