



GROUNDWATER QUALITY ANALYSIS REPORT

Kampong Cham - Tboung Khmum - Kor (58F)



Kor is located in the district of Tboung Khmum. The population of this commune is approximately 14625 (2004). Groundwater sample collection occurred in June 2008 and consisted of the sampling of 12 tube wells throughout the commune. The attached figure presents the location of Kor within Kampong Cham as well as groundwater sample locations and exceedances of health-impacting contaminants (when applicable).

Groundwater Quality Rating

The groundwater quality rating for Kor is 58F. Therefore, the general safety of deep aquifer groundwater is good and the aesthetic quality of the water is poor, according to the contaminants measured and samples collected. The following two sections describe all major health and aesthetic contaminants that exceeded drinking water standards in at least one sample within the commune.

Contaminants of Potential Concern – Health

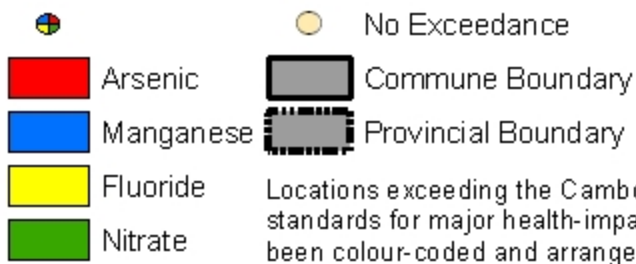
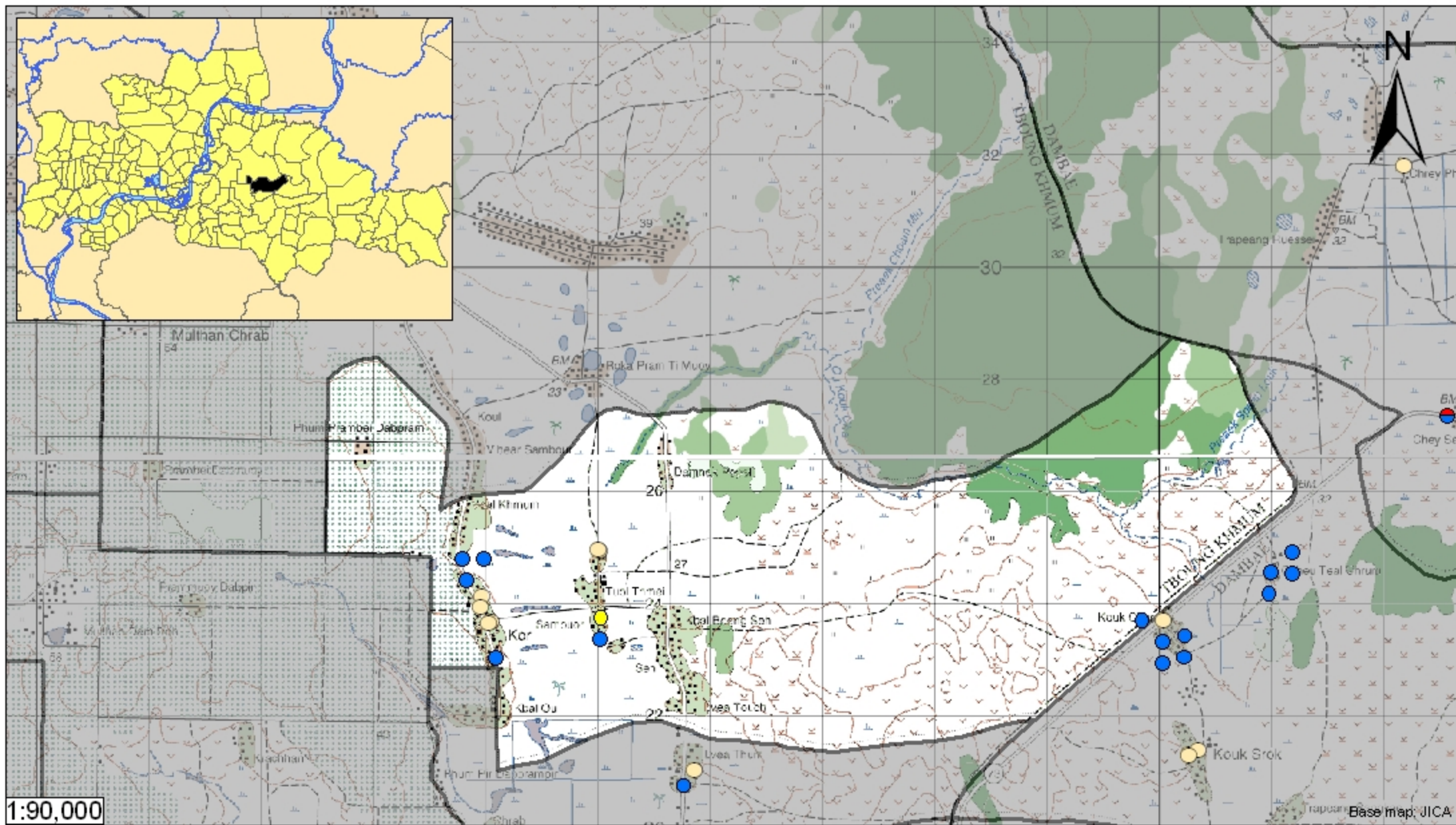
Manganese - Elevated concentrations of Manganese were observed within the commune. The estimated probability of encountering unacceptable concentrations of Manganese (>0.4 mg/L) in tube wells is 33%, based on the observed data. Exposure to elevated concentrations of Manganese can cause neurological disorders. Aeration allows oxygen to enter the water and react with Manganese to form a compound which is insoluble in water. The newly formed solids will slowly settle to the bottom or can be removed more rapidly by filtration. Performing these procedures may reduce the concentration of Manganese in water but follow-up testing is recommended to ensure water quality standards are met.

Fluoride - Elevated concentrations of Fluoride were observed within the commune. The estimated probability of encountering unacceptable concentrations of Fluoride (>1.5 mg/L) in tube wells is 3%, based on the observed data. At concentrations greater than 1.5 mg/L, Fluoride can cause dental fluorosis and at concentrations greater than 4 mg/L, skeletal fluorosis can occur.

Contaminants of Potential Concern – Aesthetic

Iron - Elevated concentrations of Iron were observed within the commune. The estimated probability of encountering potentially unacceptable concentrations of Iron (>1 mg/L) in tube wells is 82%, based on the observed data. At elevated concentrations, Iron causes water to be cloudy and unpleasant to drink. An odor may also be encountered at high concentrations. Iron can also stain laundry, food (can cause discoloration of cooked rice), and leave deposits. Aeration allows oxygen to enter the water and react with Iron to form a compound which is insoluble in water. The newly formed solids will slowly settle to the bottom or can be removed more rapidly by filtration. Performing these procedures may reduce the concentration of Iron in water but follow-up testing is recommended to ensure water quality standards are met.

Manganese - Elevated concentrations of Manganese were observed within the commune. The estimated probability of encountering unacceptable concentrations of Manganese (>0.4 mg/L) in tube wells is approximately 33%, based on the observed data. At elevated concentrations, Manganese causes water to be cloudy and unpleasant to drink. Manganese can also stain laundry, food (can cause discoloration of cooked rice), and leave deposits. Aeration allows oxygen to enter the water and react with Manganese to form a compound which is insoluble in water. The newly formed solids will slowly settle to the bottom or can be removed more rapidly by filtration. Performing these procedures may reduce the concentration of Manganese in water but follow-up testing is recommended to ensure water quality standards are met.



Tube Well Sample Locations and Health-Based Exceedances

Kor - Tboung Khmum - Kampong Cham - Cambodia

Resource Development International - Cambodia

www.rdic.org

June 2008

