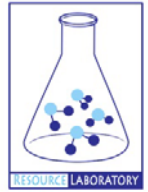




GROUNDWATER QUALITY ANALYSIS REPORT

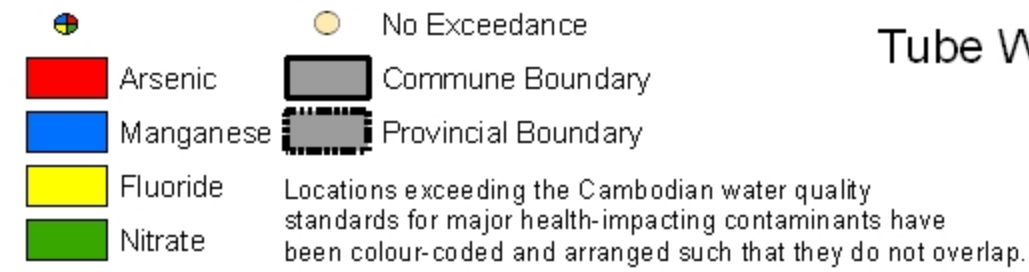
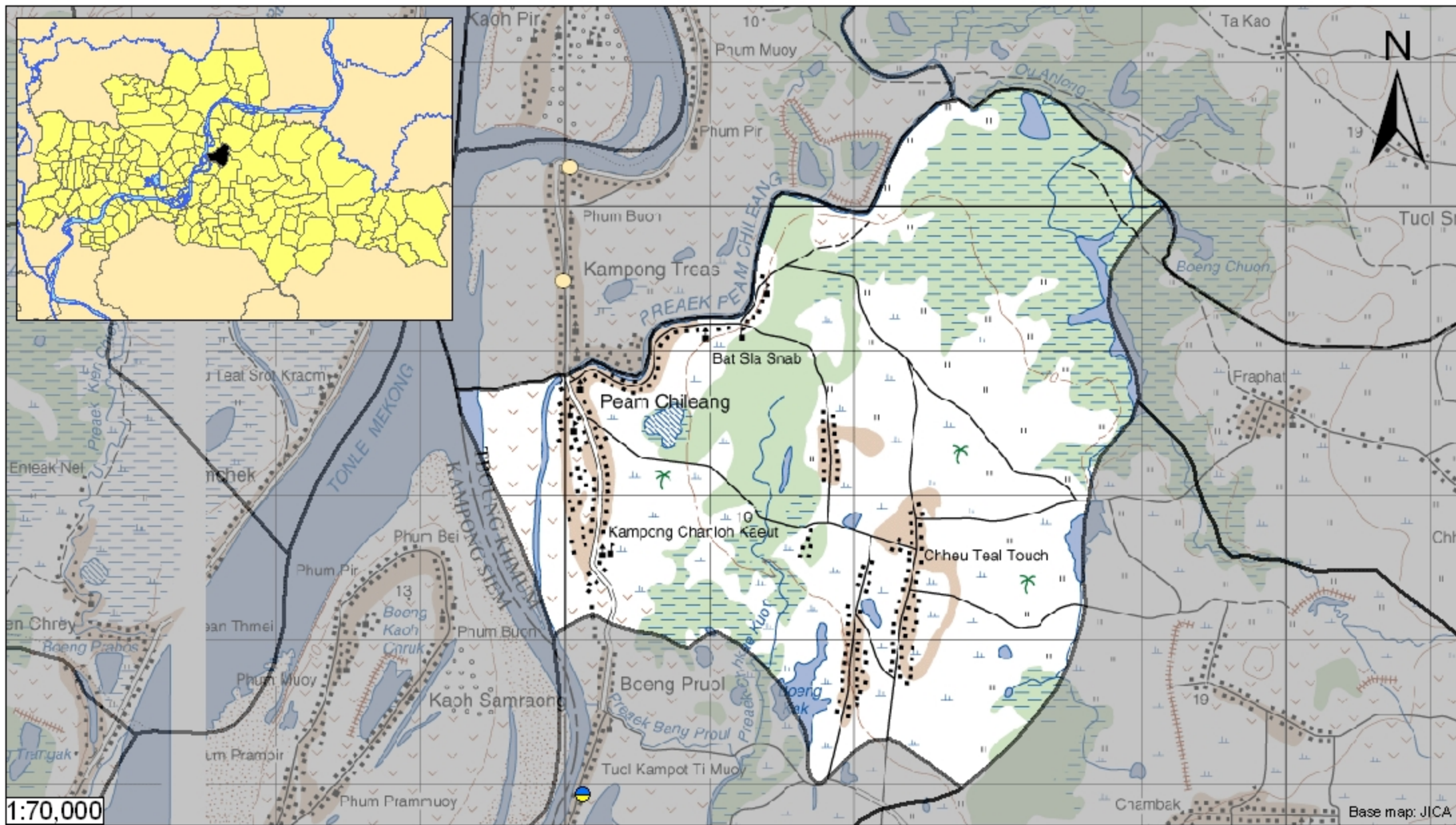
Kampong Cham – Tboung Khmum – Peam Chileang (N/A)



Peam Chileang is located in the district of Tboung Khmum. The population of this commune is approximately 8831 (2004). No tube wells were sampled in the commune. The attached figure presents the location of Peam Chileang within Kampong Cham as well as groundwater sample locations and exceedances of health-impacting contaminants in surrounding communes.

Groundwater Quality Rating

The groundwater quality rating for Peam Chileang cannot be reported.



Tube Well Sample Locations and Health-Based Exceedances

Peam Chileang - Tboung Khmum - Kampong Cham - Cambodia

Resource Development International - Cambodia
www.rdic.org
 June 2008

