



GROUNDWATER QUALITY ANALYSIS REPORT

Kampong Chnang - Chol Kiri - Chol Sar (N/A)



Chol Sar is located in the district of Chol Kiri. The population of this commune is approximately 5549 (2004). Groundwater sample collection occurred in May 2010 and consisted of the sampling of 4 tube wells throughout the commune. The attached figure presents the location of Chol Sar within Kampong Chnang as well as groundwater sample locations and exceedances of health-impacting contaminants (when applicable).

Groundwater Quality Rating

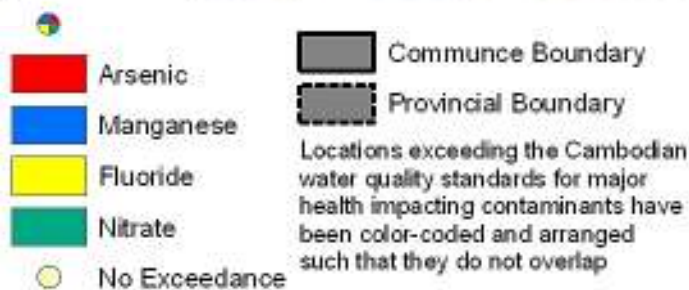
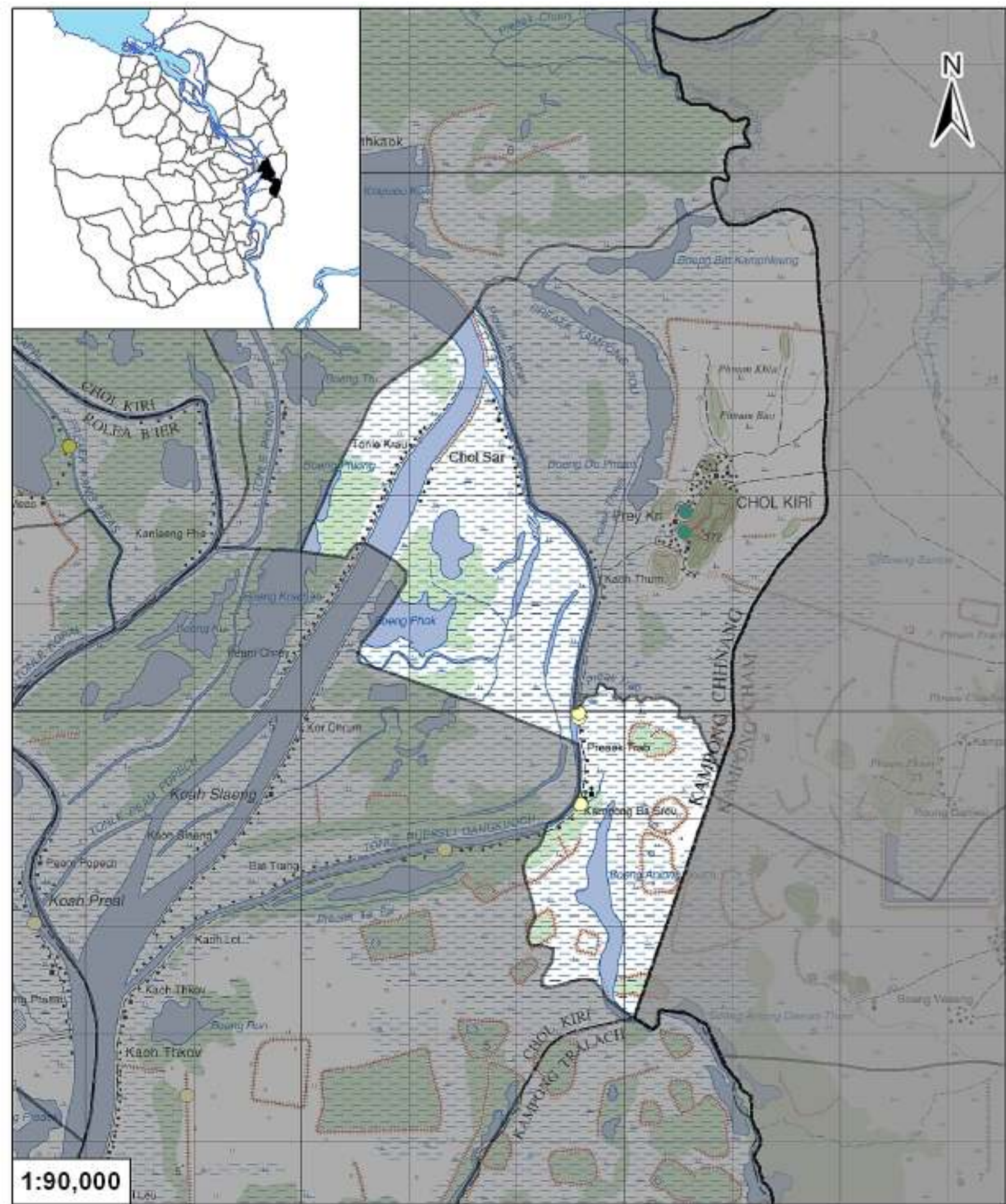
An insufficient number of samples were collected in this commune to adequately characterize groundwater conditions. A groundwater quality rating is not presented for this commune.

Contaminants of Potential Concern – Health

No health-impacting contaminants of concern were observed within this commune.

Contaminants of Potential Concern – Aesthetic

No aesthetic-impacting contaminants of concern were observed within this commune.



Tube Well Sample Locations and Health-Based Exceedances

Chol Sar - Chol Kiri - Kampong Chhnang - Cambodia