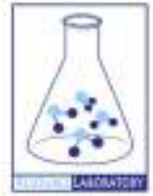




## **GROUNDWATER QUALITY ANALYSIS REPORT**

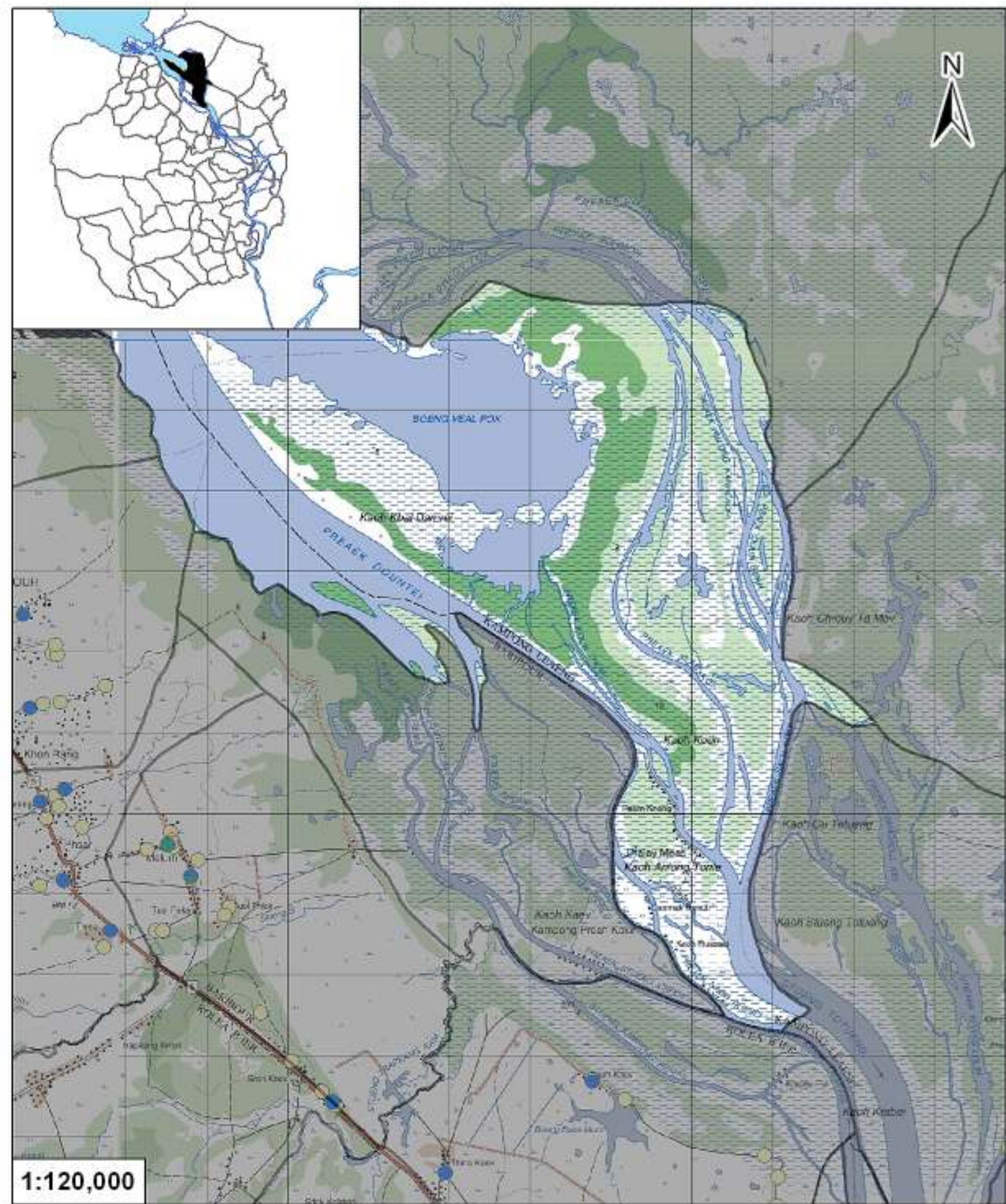
### ***Kampong Chhnang – Kampong Leaeng – Pralay Meas (N/A)***



Pralay Meas is located in the district of Kampong Leaeng. The population of this commune is approximately 3952 (2004). No tube wells were sampled in the commune. The attached figure presents the location of Pralay Meas within Kampong Chhnang as well as groundwater sample locations and exceedances of health-impacting contaminants in surrounding communes.

#### **Groundwater Quality Rating**

The groundwater quality rating for Pralay Meas cannot be reported.



- Arsenic
- Manganese
- Fluoride
- Nitrate
- No Exceedance

- Commune Boundary
  - Provincial Boundary
- Locations exceeding the Cambodian water quality standards for major health impacting contaminants have been color-coded and arranged such that they do not overlap

## Tube Well Sample Locations and Health-Based Exceedances

*Pralay Meas - Kampong Leaeung - Kampong Chhnang - Cambodia*

Resource Development International - Cambodia  
[www.rdic.org](http://www.rdic.org)  
 January 2011

