



## **GROUNDWATER QUALITY ANALYSIS REPORT**

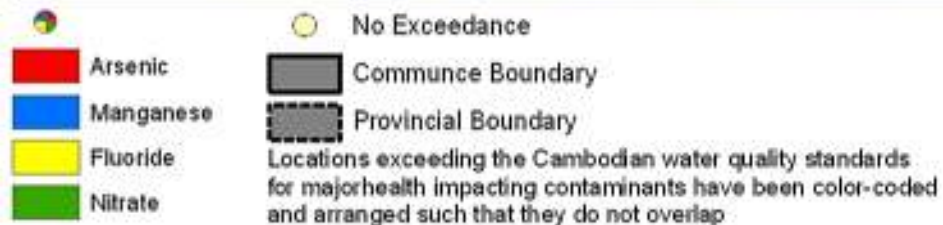
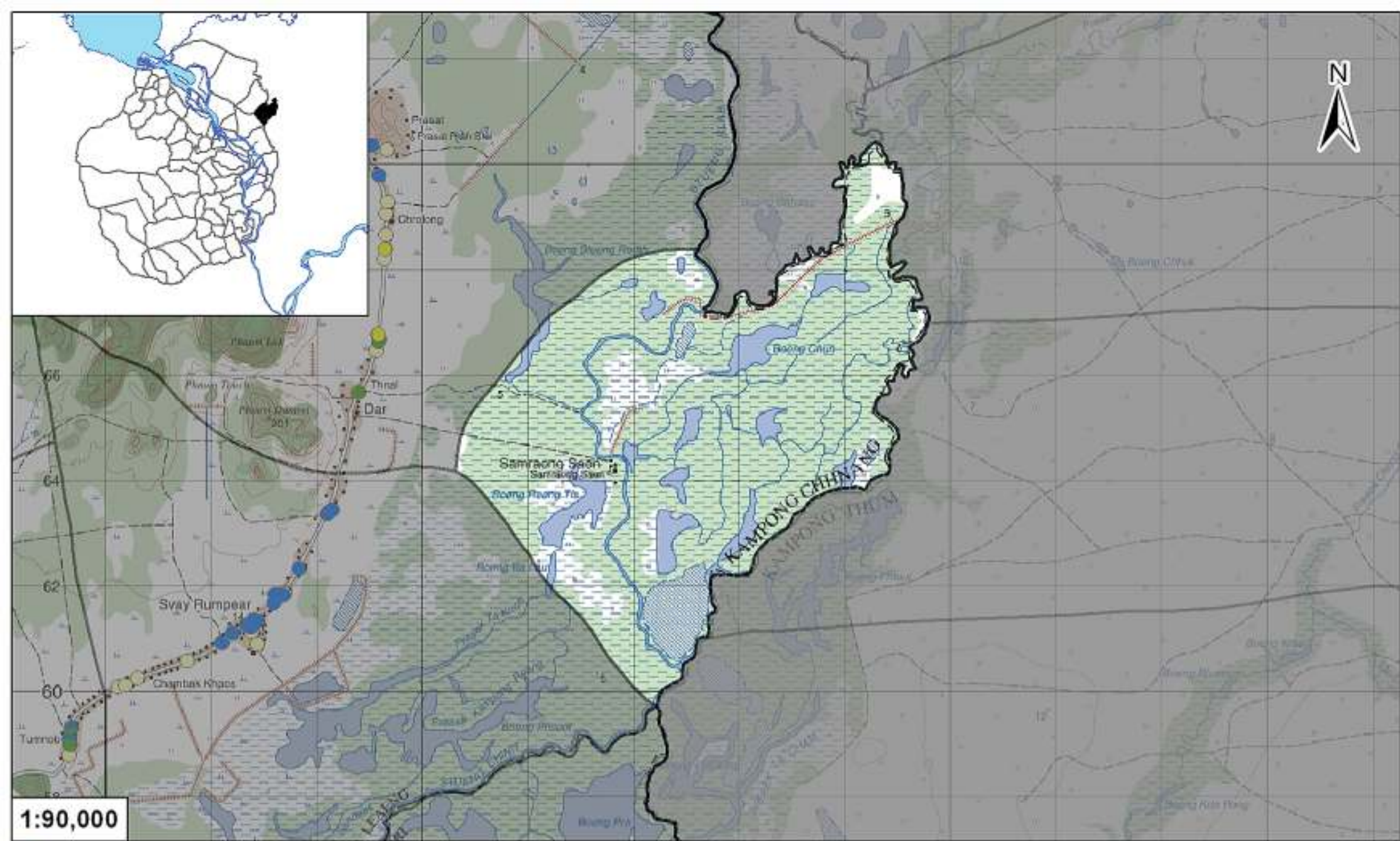
### ***Kampong Chhnang – Kampong Leaeng – Samraong Saen (N/A)***



Samraong Saen is located in the district of Kampong Leaeng. The population of this commune is approximately 1328 (2004). No tube wells were sampled in the commune. The attached figure presents the location of Samraong Saen within Kampong Chhnang as well as groundwater sample locations and exceedances of health-impacting contaminants in surrounding communes.

#### **Groundwater Quality Rating**

The groundwater quality rating for Samraong Saen cannot be reported.



## Tube Well Sample Locations and Health-Based Exceedances

Samraong Saen - Kampong Leang - Kampong Chhnang - Cambodia

Resource Development International - Cambodia

www.rdi.org  
January 2011

