



GROUNDWATER QUALITY ANALYSIS REPORT

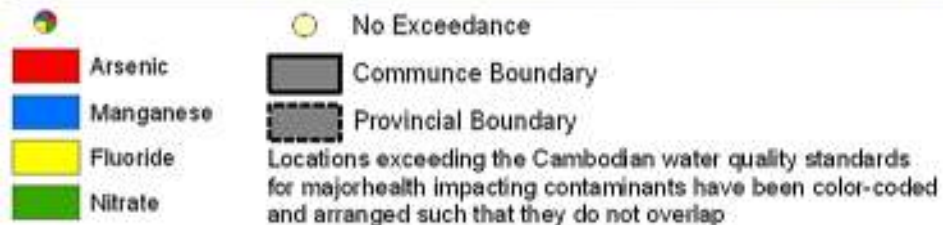
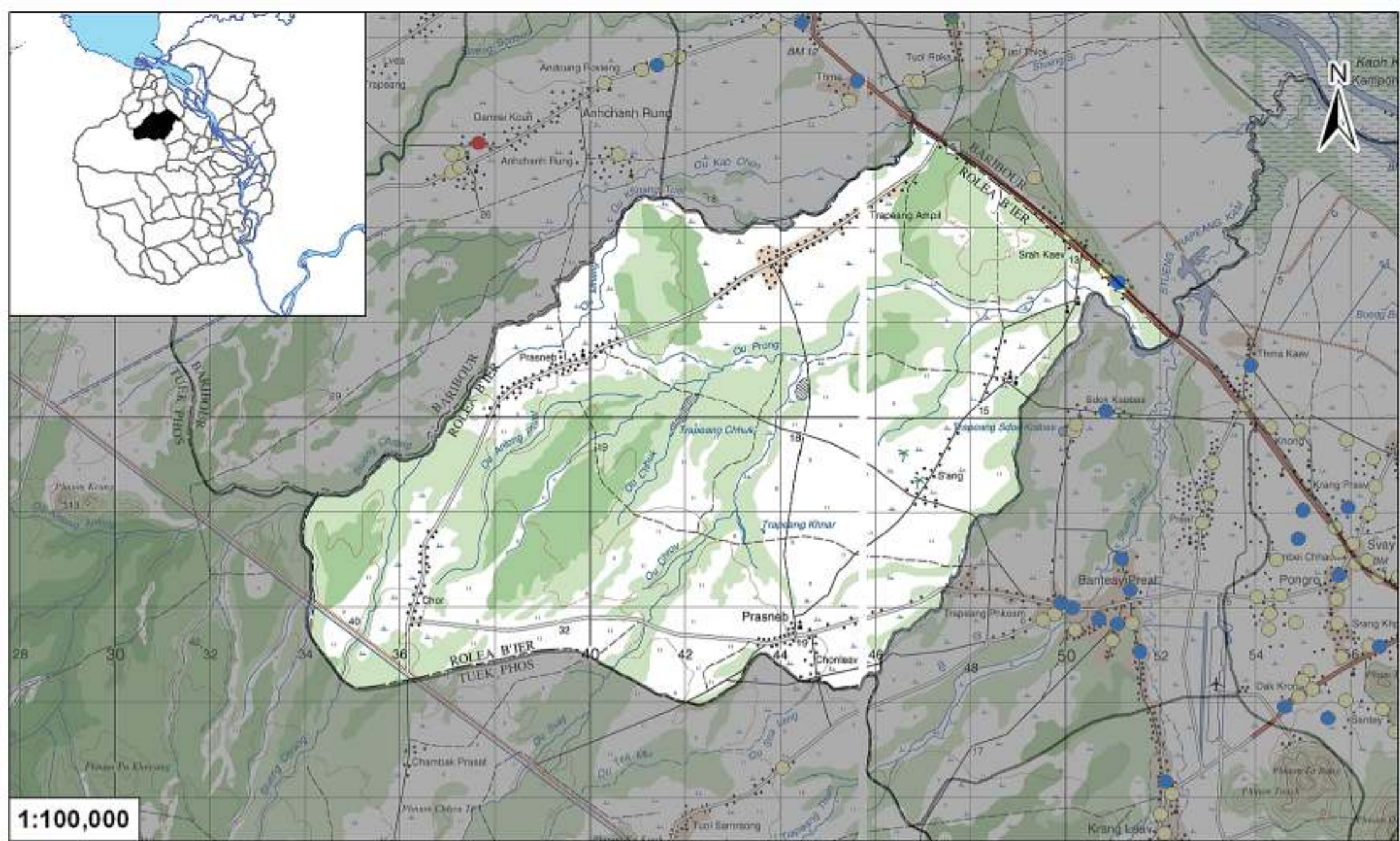
Kampong Chnang – Rolea B'ier – Prasneb (N/A)



Prasneb is located in the district of Rolea B'ier. The population of this commune is approximately 4612 (2004). No tube wells were sampled in the commune. The attached figure presents the location of Prasneb within Kampong Chhnang as well as groundwater sample locations and exceedances of health-impacting contaminants in surrounding communes.

Groundwater Quality Rating

The groundwater quality rating for Prasneb cannot be reported.



Tube Well Sample Locations and Health-Based Exceedances

Prasneb - Rolea B'ier - Kampong Chhnang - Cambodia

Resource Development International - Cambodia

www.rdi.org
January 2011

