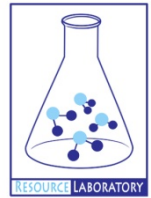




GROUNDWATER QUALITY ANALYSIS REPORT

Prey Veng - Ba Phnum - Chheu kach (88A)



Chheu kach is located in the district of Ba Phnum. The population of this commune is approximately 7500 (2004). Groundwater sample collection occurred in July 2007 and consisted of the sampling of 18 tube wells throughout the commune. The attached figure presents the location of Chheu kach within Prey Veng as well as groundwater sample locations and exceedances of health-impacting contaminants (when applicable).

Groundwater Quality Rating

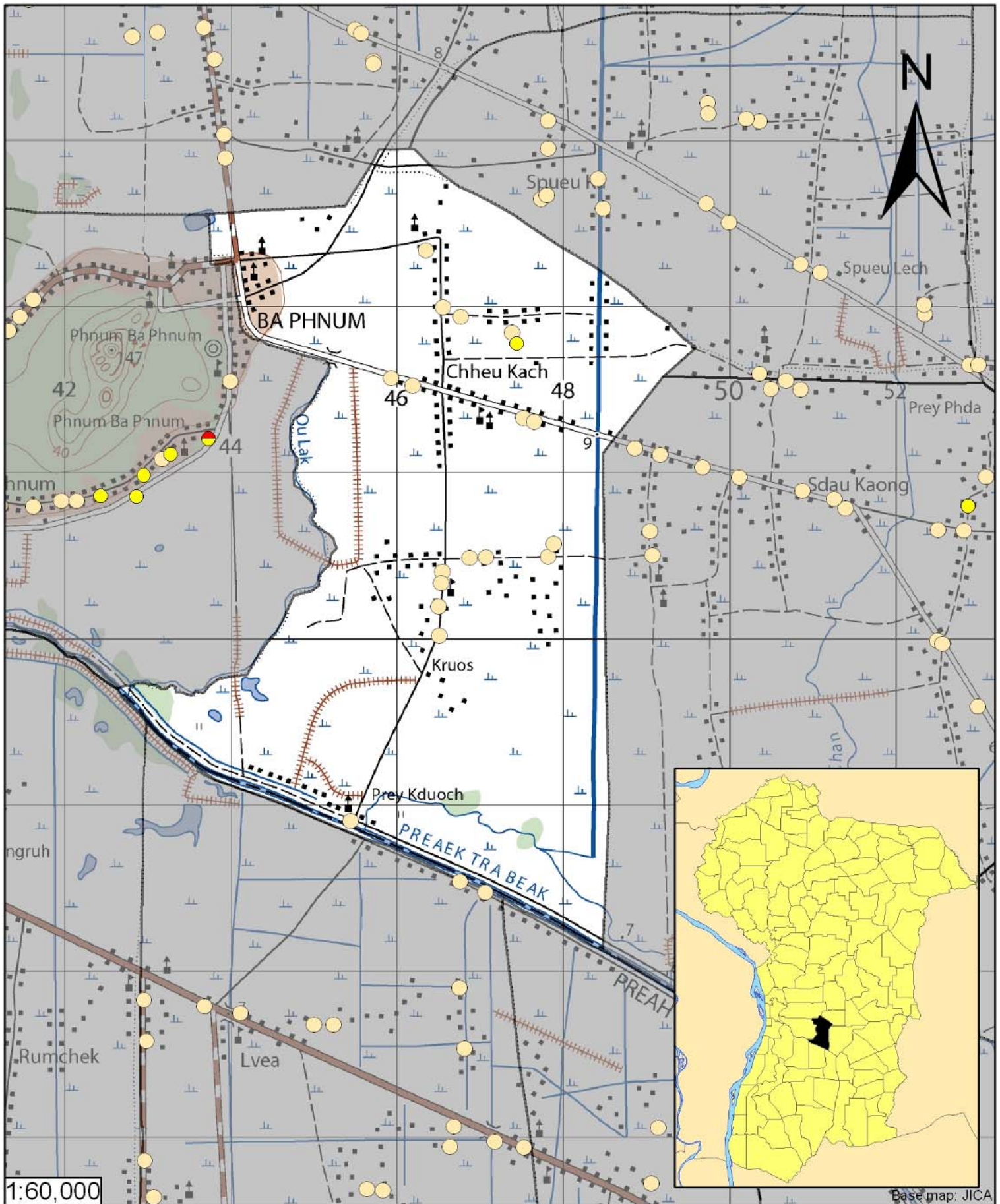
The groundwater quality rating for Chheu kach is 88A. Therefore, the general safety of deep aquifer groundwater is very good and the aesthetic quality of the water is excellent, according to the contaminants measured and samples collected. The following two sections describe all major health and aesthetic contaminants that exceeded drinking water standards in at least one sample within the commune.

Contaminants of Potential Concern – Health

Fluoride - Elevated concentrations of Fluoride were observed within the commune. The estimated probability of encountering unacceptable concentrations of Fluoride (>1.5 mg/L) in tube wells is 19%, based on the observed data. At concentrations greater than 1.5 mg/L, Fluoride can cause dental fluorosis and at concentrations greater than 4 mg/L, skeletal fluorosis can occur.







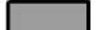
Contaminants of Potential Concern – Aesthetic

No aesthetic-impacting contaminants of concern were observed within this commune.



1:60,000

Base map: JICA

-  Arsenic
 -  Manganese
 -  Fluoride
 -  Nitrate
 -  No Exceedance
 -  Province Boundary
 -  Commune Boundary
- Locations exceeding the Cambodian water quality standards for major health-impacting contaminants have been colour-coded and arranged such that they do not overlap.

Tube Well Sample Locations and Health-Based Exceedances

Chheu Kach - Ba Phnum - Prey Veaeng - Cambodia

Resource Development International - Cambodia
www.rdic.org
 June 2008

