



GROUNDWATER QUALITY ANALYSIS REPORT

Prey Veng - Ba Phnum - Spueu Ka (100F)



Spueu Ka is located in the district of Ba Phnum. The population of this commune is approximately 7900 (2004). Groundwater sample collection occurred in July 2007 and consisted of the sampling of 20 tube wells throughout the commune. The attached figure presents the location of Spueu Ka within Prey Veng as well as groundwater sample locations and exceedances of health-impacting contaminants (when applicable).

Groundwater Quality Rating

The groundwater quality rating for Spueu Ka is 100F. Therefore, the general safety of deep aquifer groundwater is excellent and the aesthetic quality of the water is poor, according to the contaminants measured and samples collected. The following two sections describe all major health and aesthetic contaminants that exceeded drinking water standards in at least one sample within the commune.

Contaminants of Potential Concern – Health

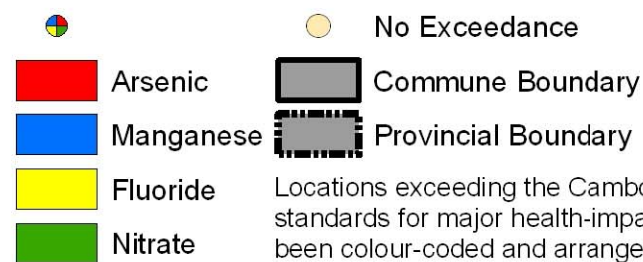
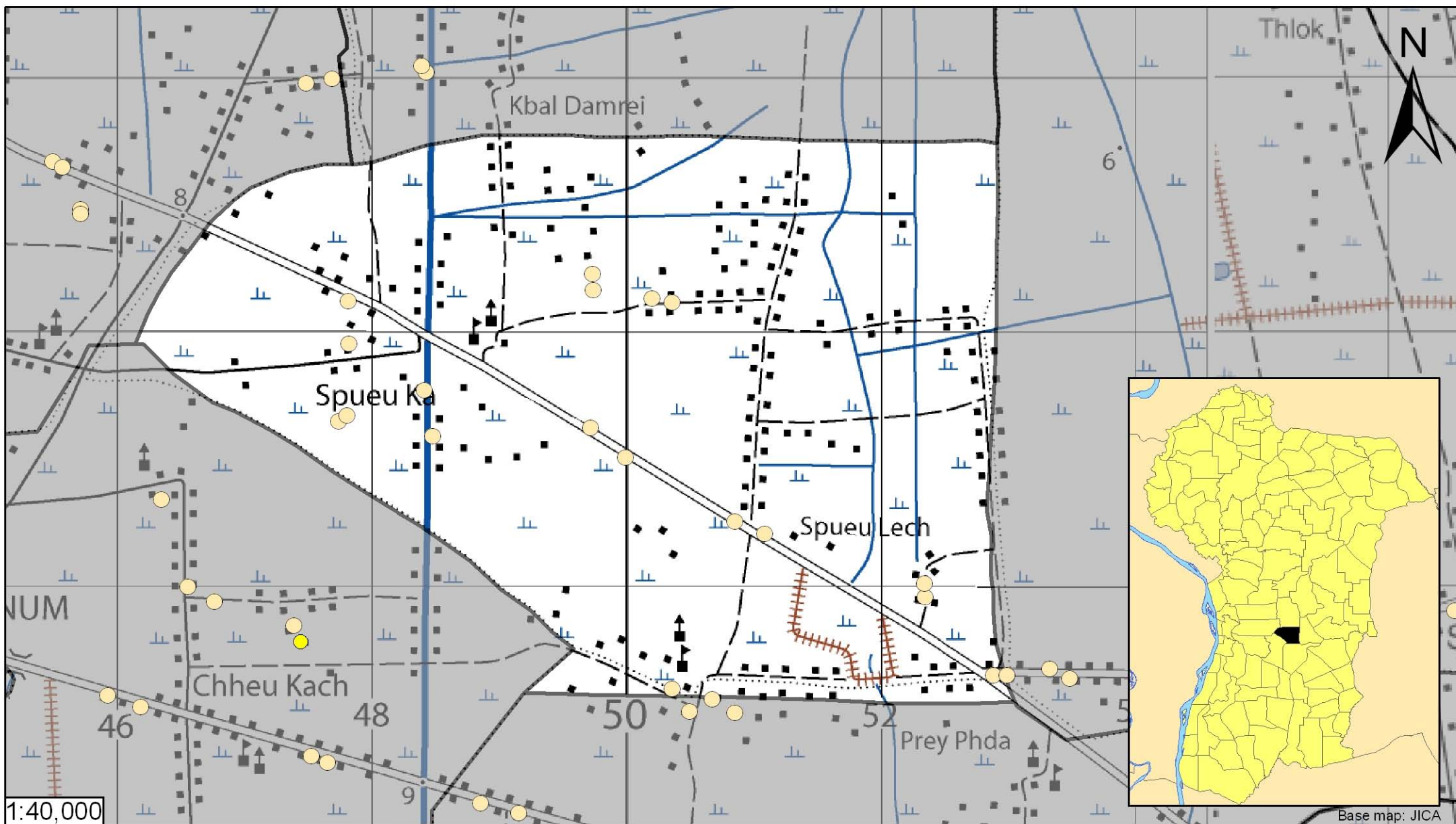
No health-impacting contaminants of concern were observed within this commune.

Contaminants of Potential Concern – Aesthetic

Iron - Elevated concentrations of Iron were observed within the commune. The estimated probability of encountering potentially unacceptable concentrations of Iron (>1 mg/L) in tube wells is 100%, based on the observed data. At elevated concentrations, Iron causes water to be cloudy and unpleasant to drink. An odor may also be encountered at high concentrations. Iron can also stain laundry, food (can cause discoloration of cooked rice), and leave deposits. Aeration allows oxygen to enter the water and react with Iron to form a compound which is insoluble in water. The newly formed solids will slowly settle to the bottom or can be removed more rapidly by filtration. Performing these procedures may reduce the concentration of Iron in water but follow-up testing is recommended to ensure water quality standards are met.

Turbidity - Elevated levels of Turbidity were observed within the commune. The estimated probability of encountering potentially unacceptable levels of Turbidity (>20 ntu) in tube wells is 11%, based on the observed data. Turbid or cloudy water appears

unpleasant to the eye and is more likely have an unpleasant taste or odor. Turbidity can be reduced by filtration.



Tube Well Sample Locations and Health-Based Exceedances

Spueu Ka - Ba Phnum - Prey Veang - Cambodia

Resource Development International - Cambodia

www.rdic.org

June 2008

