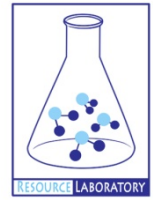




# **GROUNDWATER QUALITY ANALYSIS REPORT**

## ***Prey Veng - Kampong Leav - Cheung Tuek (81F)***



Cheung Tuek is located in the district of Kampong Leav. The population of this commune is approximately 5115 (2004). Groundwater sample collection occurred in January 2008 and consisted of the sampling of 20 tube wells throughout the commune. The attached figure presents the location of Cheung Tuek within Prey Veng as well as groundwater sample locations and exceedances of health-impacting contaminants (when applicable).

### **Groundwater Quality Rating**

The groundwater quality rating for Cheung Tuek is 81F. Therefore, the general safety of deep aquifer groundwater is very good and the aesthetic quality of the water is poor, according to the contaminants measured and samples collected. The following two sections describe all major health and aesthetic contaminants that exceeded drinking water standards in at least one sample within the commune.

### **Contaminants of Potential Concern – Health**

Manganese - Elevated concentrations of Manganese were observed within the commune. The estimated probability of encountering unacceptable concentrations of Manganese (>0.4 mg/L) in tube wells is 20%, based on the observed data. Exposure to elevated concentrations of Manganese can cause neurological disorders. Aeration allows oxygen to enter the water and react with Manganese to form a compound which is insoluble in water. The newly formed solids will slowly settle to the bottom or can be removed more rapidly by filtration. Performing these procedures may reduce the concentration of Manganese in water but follow-up testing is recommended to ensure water quality standards are met.

### **Contaminants of Potential Concern – Aesthetic**

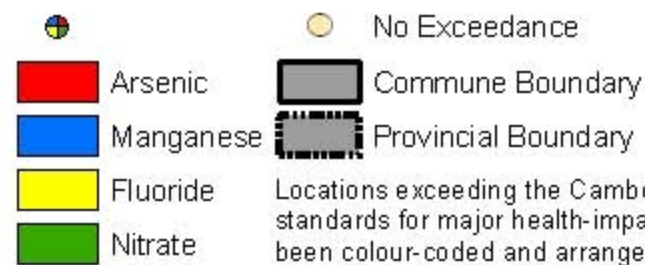
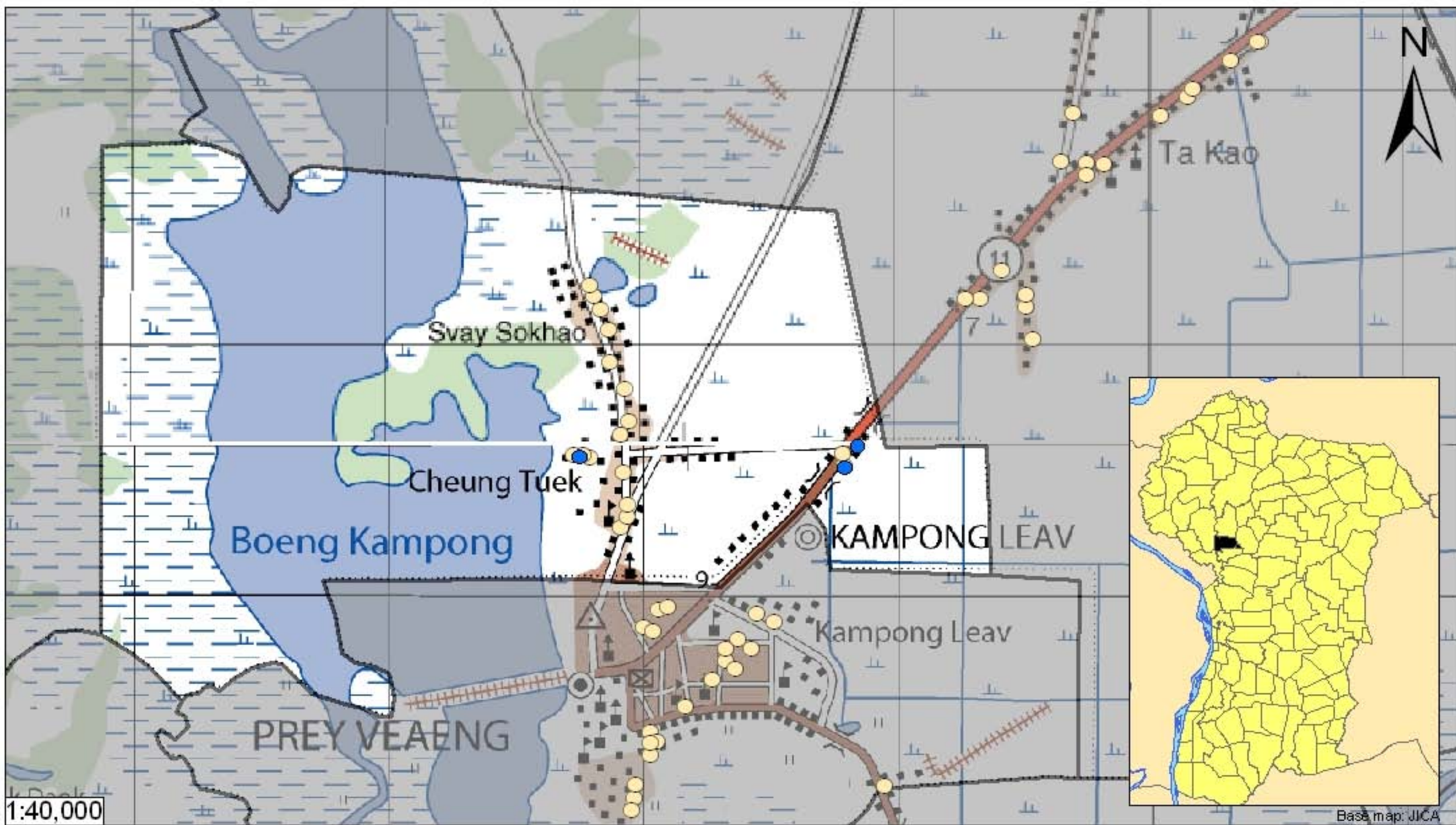
Iron - Elevated concentrations of Iron were observed within the commune. The estimated probability of encountering potentially unacceptable concentrations of Iron (>1 mg/L) in tube wells is 55%, based on the observed data. At elevated concentrations, Iron causes water to be cloudy and unpleasant to drink. An odor may also be encountered at high concentrations. Iron can also stain laundry, food (can cause discoloration of cooked rice), and leave deposits. Aeration allows oxygen to enter the water and react with Iron to form

a compound which is insoluble in water. The newly formed solids will slowly settle to the bottom or can be removed more rapidly by filtration. Performing these procedures may reduce the concentration of Iron in water but follow-up testing is recommended to ensure water quality standards are met.

Manganese - Elevated concentrations of Manganese were observed within the commune. The estimated probability of encountering unacceptable concentrations of Manganese (>0.4 mg/L) in tube wells is approximately 20%, based on the observed data. At elevated concentrations, Manganese causes water to be cloudy and unpleasant to drink. Manganese can also stain laundry, food (can cause discoloration of cooked rice), and leave deposits. Aeration allows oxygen to enter the water and react with Manganese to form a compound which is insoluble in water. The newly formed solids will slowly settle to the bottom or can be removed more rapidly by filtration. Performing these procedures may reduce the concentration of Manganese in water but follow-up testing is recommended to ensure water quality standards are met.

Turbidity - Elevated levels of Turbidity were observed within the commune. The estimated probability of encountering potentially unacceptable levels of Turbidity (>20 ntu) in tube wells is 12%, based on the observed data. Turbid or cloudy water appears unpleasant to the eye and is more likely have an unpleasant taste or odor. Turbidity can be reduced by filtration.

Hardness - Elevated levels of Hardness were observed within the commune. The estimated probability of encountering potentially unacceptable levels of Hardness (>500 mg/L) in tube wells is 1%, based on the observed data. Elevated hardness levels impact the effectiveness of soaps and detergents and can cause scaling on pipes and pans. Contrary to common belief, there is no relationship between consumption of hard water and urinary tract problems and kidney stones.



## Tube Well Sample Locations and Health-Based Exceedances

*Cheung Tuek - Kampong Leav - Prey Veng - Cambodia*

Resource Development International - Cambodia  
[www.rdic.org](http://www.rdic.org)  
 June 2008

