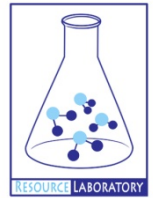




# **GROUNDWATER QUALITY ANALYSIS REPORT**

## **Prey Veng - Peam Chor - Angkor Angk (95C)**



Angkor Angk is located in the district of Peam Chor. The population of this commune is approximately 5500 (2004). Groundwater sample collection occurred in April 2007 and consisted of the sampling of 13 tube wells throughout the commune. The attached figure presents the location of Angkor Angk within Prey Veng as well as groundwater sample locations and exceedances of health-impacting contaminants (when applicable).

### **Groundwater Quality Rating**

The groundwater quality rating for Angkor Angk is 95C. Therefore, the general safety of deep aquifer groundwater is excellent and the aesthetic quality of the water is good, according to the contaminants measured and samples collected. The following two sections describe all major health and aesthetic contaminants that exceeded drinking water standards in at least one sample within the commune.

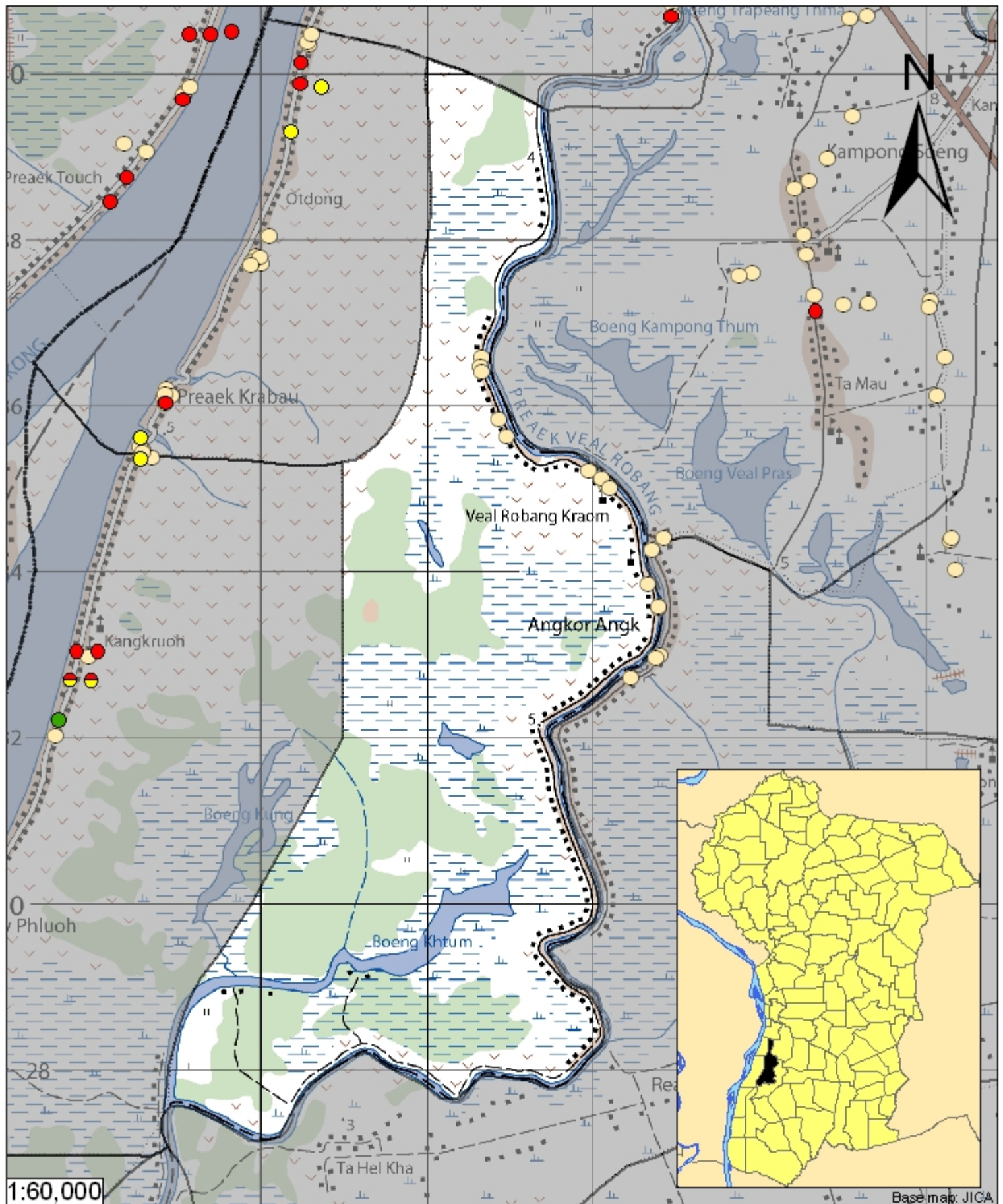
### **Contaminants of Potential Concern – Health**









No health-impacting contaminants of concern were observed within this commune.

### **Contaminants of Potential Concern – Aesthetic**

Turbidity - Elevated levels of Turbidity were observed within the commune. The estimated probability of encountering potentially unacceptable levels of Turbidity (>20 ntu) in tube wells is 10%, based on the observed data. Turbid or cloudy water appears unpleasant to the eye and is more likely have an unpleasant taste or odor. Turbidity can be reduced by filtration.

Chloride - Elevated concentrations of Chloride were observed within the commune. The estimated probability of encountering potentially unacceptable concentrations of Chloride (>600 mg/L) in tube wells is 22%, based on the observed data. Chloride can make water unpleasant to drink at elevated concentrations.



-  Locations exceeding the Cambodian water quality standards for major health-impacting contaminants have been colour-coded and arranged such that they do not overlap.
-  Arsenic
-  Manganese
-  Fluoride
-  Nitrate
-  No Exceedance
-  Province Boundary
-  Commune Boundary

## Tube Well Sample Locations and Health-Based Exceedances

Angkor Angk - Peam Chor - Prey Veng - Cambodia

Resource Development International - Cambodia  
[www.rdic.org](http://www.rdic.org)  
 June 2008

