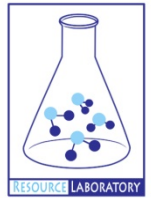




# **GROUNDWATER QUALITY ANALYSIS REPORT**

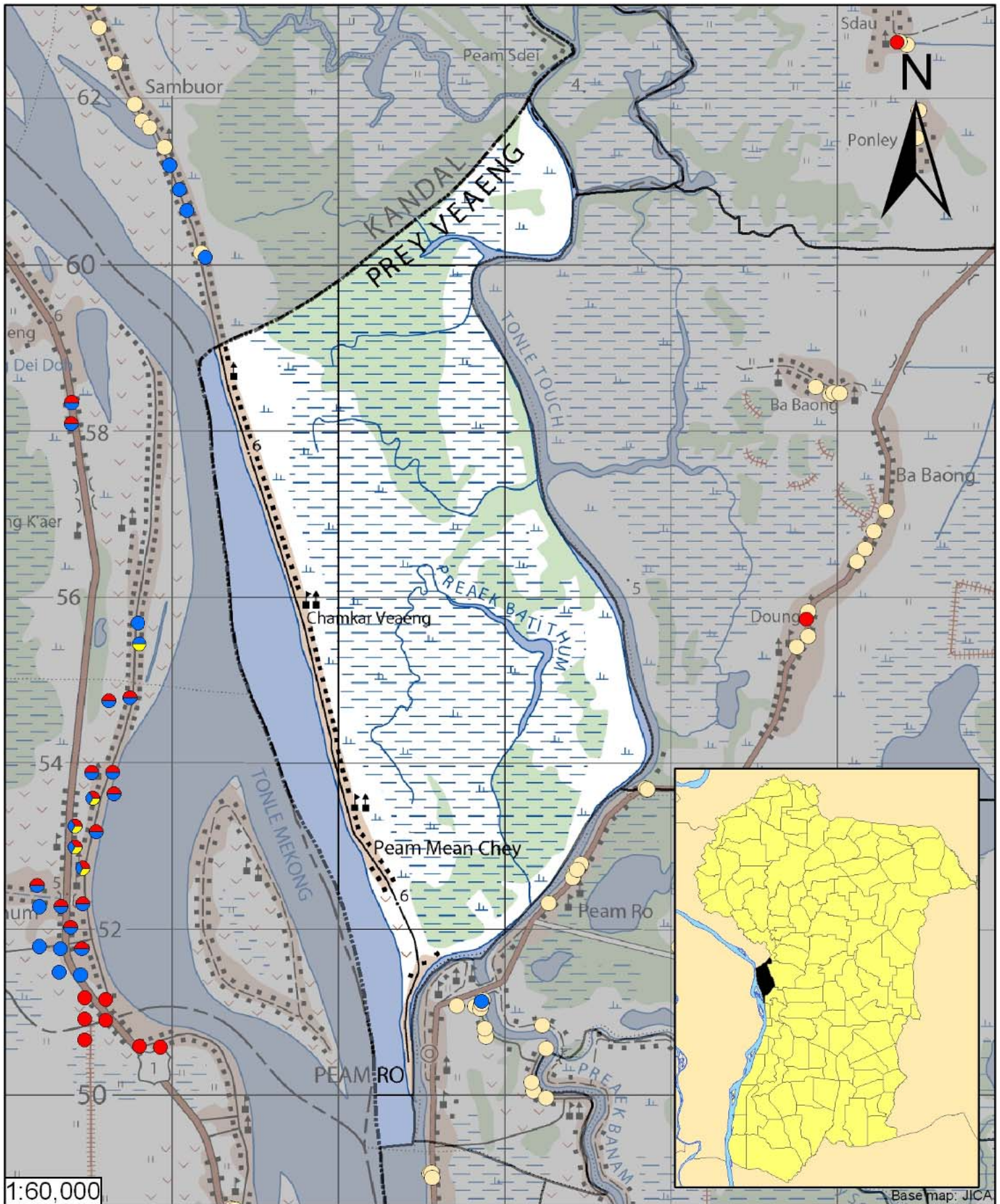
## ***Prey Veng – Peam Ro – Peam Mean Chey (N/A)***









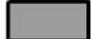
Peam Mean Chey is located in the district of Peam Ro. The population of this commune is approximately 6478 (2004). No tube wells were sampled in the commune. The attached figure presents the location of Peam Mean Chey within Prey Veng as well as groundwater sample locations and exceedances of health-impacting contaminants in surrounding communes.

### **Groundwater Quality Rating**

The groundwater quality rating for Peam Mean Chey cannot be reported.



-  Arsenic
-  Manganese
-  Fluoride
-  Nitrate
-  No Exceedance

-  Province Boundary
-  Commune Boundary

Locations exceeding the Cambodian water quality standards for major health-impacting contaminants have been colour-coded and arranged such that they do not overlap.

## Tube Well Sample Locations and Health-Based Exceedances

*Peam Mean Chey - Peam Ro - Prey Veang - Cambodia*

Resource Development International - Cambodia  
[www.rdic.org](http://www.rdic.org)  
 June 2008

