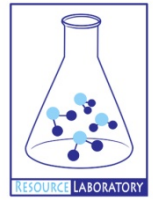




GROUNDWATER QUALITY ANALYSIS REPORT

Prey Veng - Peam Ro - Preaek Khsay Ka (91B)



Preaek Khsay Ka is located in the district of Peam Ro. The population of this commune is approximately 7469 (2004). Groundwater sample collection occurred in April 2007 and consisted of the sampling of 12 tube wells throughout the commune. The attached figure presents the location of Preaek Khsay Ka within Prey Veng as well as groundwater sample locations and exceedances of health-impacting contaminants (when applicable).

Groundwater Quality Rating

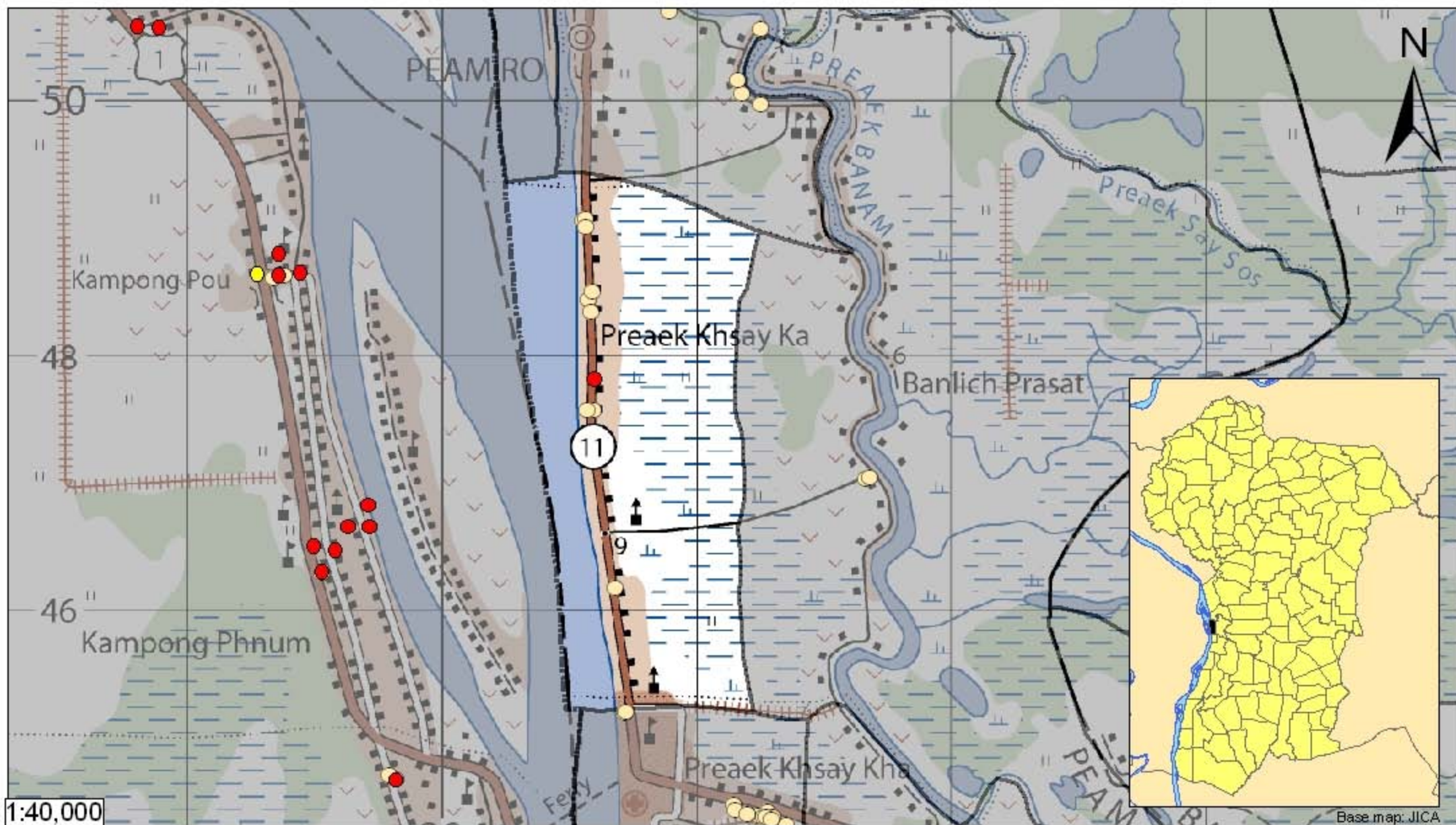
The groundwater quality rating for Preaek Khsay Ka is 91B. Therefore, the general safety of deep aquifer groundwater is excellent and the aesthetic quality of the water is very good, according to the contaminants measured and samples collected. The following two sections describe all major health and aesthetic contaminants that exceeded drinking water standards in at least one sample within the commune.

Contaminants of Potential Concern – Health

Arsenic - Elevated concentrations of Arsenic were observed within the commune. The estimated probability of encountering unacceptable concentrations of Arsenic (>50 ppb) in tube wells is 1%, based on the observed data. Long-term (5 to 10 year) exposure to elevated concentrations of Arsenic can cause arsenicosis (debilitating skin disease), increased risks of contracting cancer, as well as other negative health impacts.

Contaminants of Potential Concern – Aesthetic

Turbidity - Elevated levels of Turbidity were observed within the commune. The estimated probability of encountering potentially unacceptable levels of Turbidity (>20 ntu) in tube wells is 6%, based on the observed data. Turbid or cloudy water appears unpleasant to the eye and is more likely have an unpleasant taste or odor. Turbidity can be reduced by filtration.



Tube Well Sample Locations and Health-Based Exceedances

Preaek Khsay Ka - Peam Ro - Prey Veng - Cambodia

Resource Development International - Cambodia

www.rdic.org

June 2008

