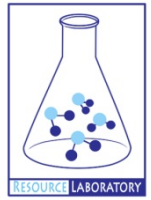




# **GROUNDWATER QUALITY ANALYSIS REPORT**

## ***Prey Veng - Preah Sdach - Seena Reach Otdam (99B)***



Seena Reach Otdam is located in the district of Preah Sdach. The population of this commune is approximately 9385 (2004). Groundwater sample collection occurred in May 2007 and consisted of the sampling of 18 tube wells throughout the commune. The attached figure presents the location of Seena Reach Otdam within Prey Veng as well as groundwater sample locations and exceedances of health-impacting contaminants (when applicable).

### **Groundwater Quality Rating**

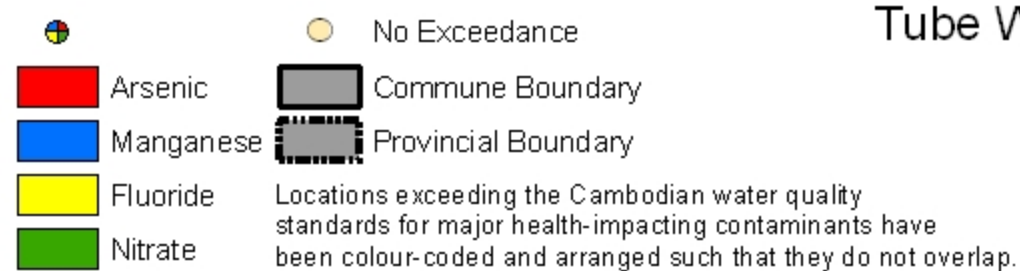
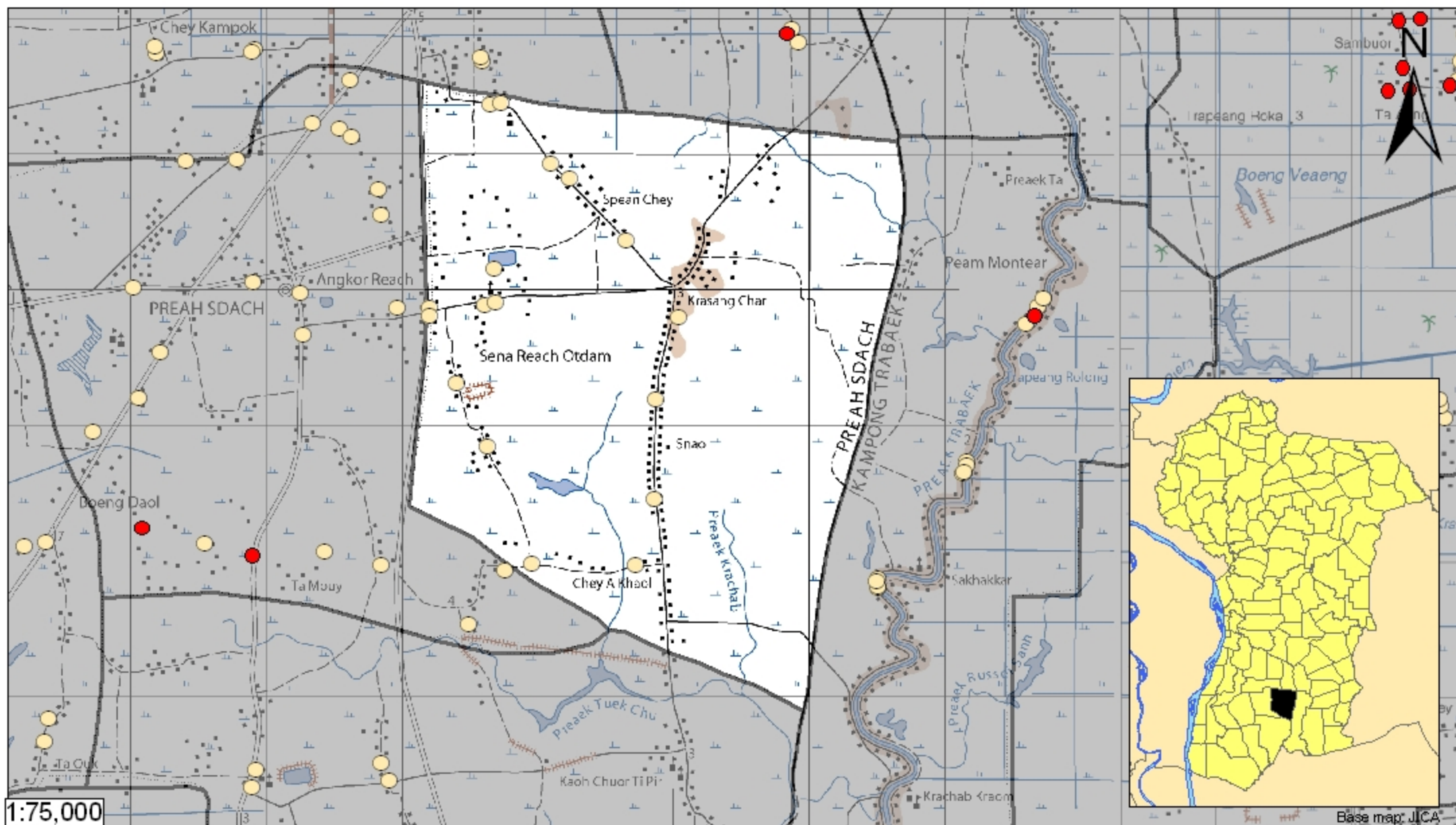
The groundwater quality rating for Seena Reach Otdam is 99B. Therefore, the general safety of deep aquifer groundwater is excellent and the aesthetic quality of the water is very good, according to the contaminants measured and samples collected. The following two sections describe all major health and aesthetic contaminants that exceeded drinking water standards in at least one sample within the commune.

### **Contaminants of Potential Concern – Health**

No health-impacting contaminants of concern were observed within this commune.

### **Contaminants of Potential Concern – Aesthetic**

Turbidity - Elevated levels of Turbidity were observed within the commune. The estimated probability of encountering potentially unacceptable levels of Turbidity (>20 ntu) in tube wells is 12%, based on the observed data. Turbid or cloudy water appears unpleasant to the eye and is more likely have an unpleasant taste or odor. Turbidity can be reduced by filtration.



## Tube Well Sample Locations and Health-Based Exceedances

### *Sena Reach Otdam - Preah Sdach - Prey Veng - Cambodia*

Resource Development International - Cambodia  
[www.rdic.org](http://www.rdic.org)  
 June 2008

